





## Guiding wheel

### Assembly instruction

Original assembly instructions

Edition	03.2016
Date of print	11.2019
Language	ALL
Option number	A131117330, A145526430
Model	-
Document number	A131286840

 <b>WARNING</b>	
 	<p><b>INADVERTENT OPERATION</b></p> <ul style="list-style-type: none"> <li>• RISK OF DEATH OR INJURY BY INADVERTENT OPERATION.</li> </ul> <p>TO AVOID DEATH OR SERIOUS INJURY: <b>SWITCH OFF THE ENGINE</b></p>
	VF16661501

 <b>CAUTION</b>	
	<p><b>READ THE MANUAL</b></p> <ul style="list-style-type: none"> <li>• THE MACHINE MUST NOT BE USED BEFORE READING THE OPERATING MANUAL.</li> </ul> <p>TO AVOID FATAL OR SERIOUS INJURY: <b>READ THE MANUAL FIRST</b></p>
	VF16661513



**These instructions are intended for authorised dealers, workshops and agents qualified in the field of agricultural mechanical engineering.**

For your safety you must familiarise yourself with the contents of these assembly instructions before assembly or operating the machine. In this way, you will achieve optimum work results and operational safety. The assembly instructions form an integral part of the machine and must always be kept to hand.

This will allow:

- accidents to be avoided,
- the warranty conditions to be met.



**For the employer:**

Untrained or unauthorised individuals are not permitted to assemble the machinery.

**For the employee:**

Stop working and assembling immediately, in case of unclear instruction or understanding. Contact your supervisor or employer. Your supervisor or employer have to ask Kverneland service for help.

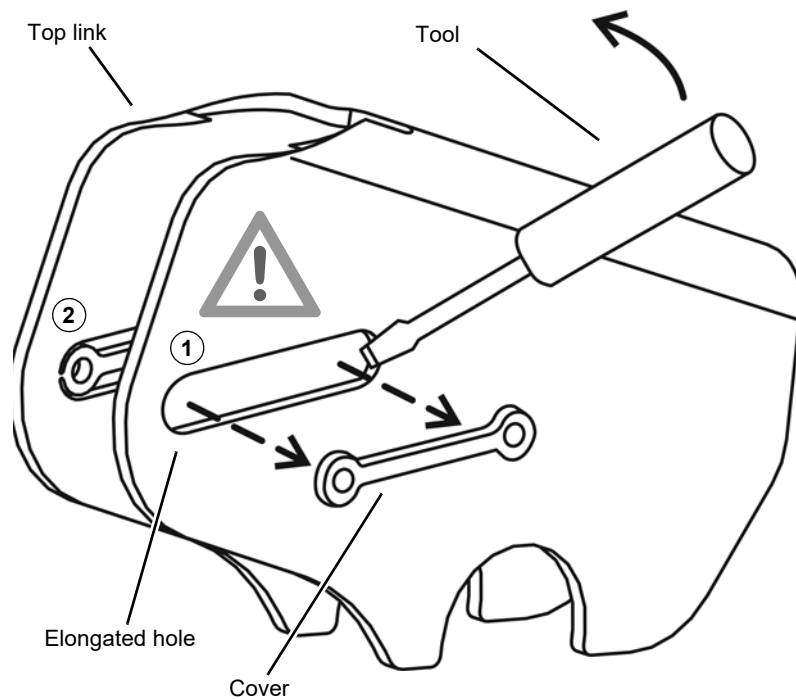


- ▶ Find more details in spare parts manual.
- ▶ Use ANSI warning decals if required.

Kverneland Group Kerteminde AS  
 Taarupstrandvej 25  
 DK-5300 Kerteminde  
 Denmark

Tel: +45 65 19 19 00

## Preparation



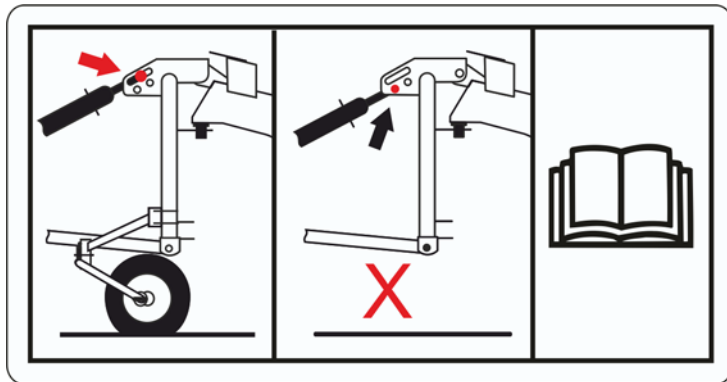
Only when using the optional contact roller: Remove the cover of the elongated hole from the top link of the three-point linkage.

**Please note the following: Otherwise, damage to the machine may be caused as a result:**

- Only with the optional contact roller:
  - ▶ Remove the cover of the elongated hole from both sides of the top link using an appropriate tool.
  - See adjacent illustration. Items (1) and (2).



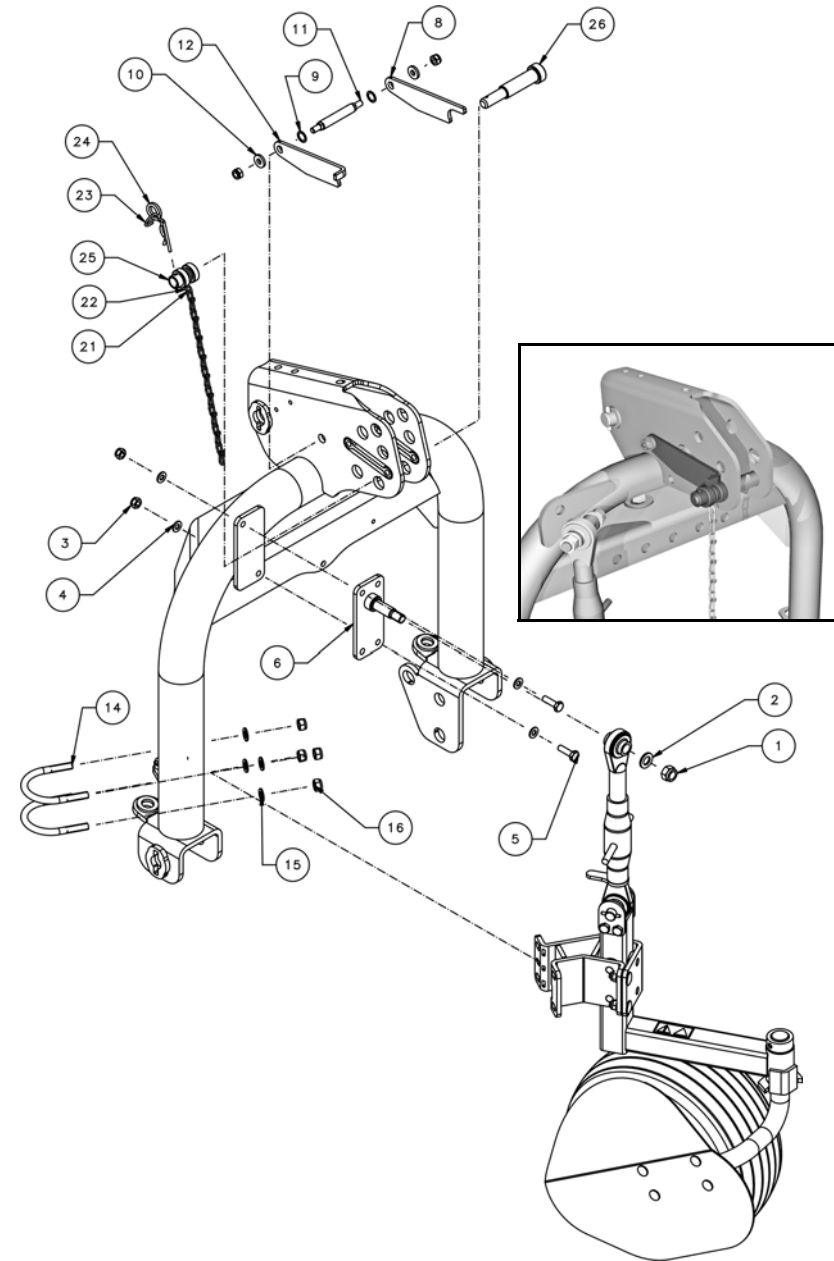
Please ensure that, where an optional contact roller is used, the hitch pin for the upper link attachment is in the middle of the elongated hole when the machine is lowered. Otherwise, the machine may not be able to handle the unevenness of the ground.



# Assembling type A

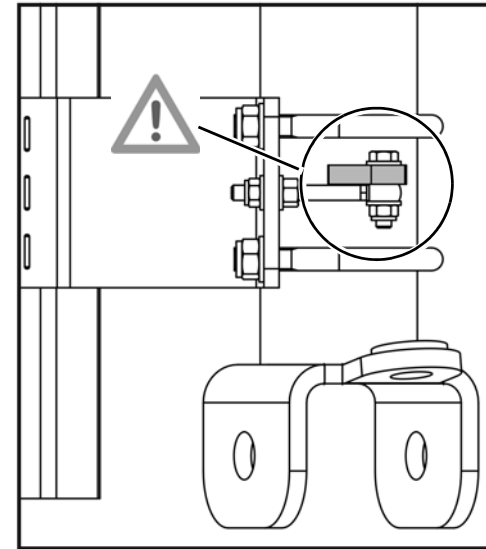
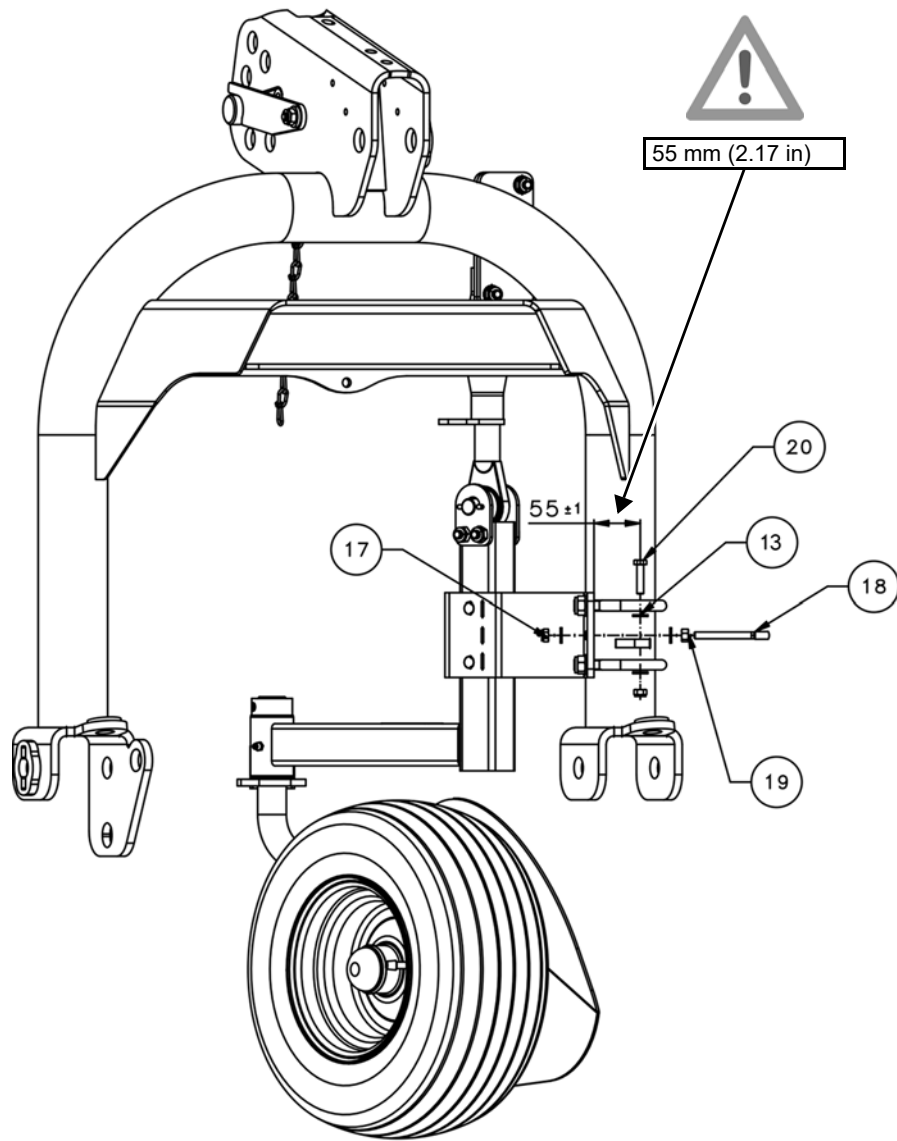
(A13117330)

NR.	PART	QUANTITY
1	LOCK NUT M16 8	2
2	WASHER M16	2
3	LOCK NUT M10 8	4
4	WASHER M10	4
5	HEX. SCREW M10X35 8.8	2
6	PLATE WELDED	1
7	PIN	1
8	CONNECTING PLATE RIGHT	1
9	WASHER 22X16X1	2
10	WASHER M10	2
11	PIN	1
12	CONNECTING PLATE LEFT	1
13	WASHER 9X18X2	4
14	YOKE SCREW	2
15	WASHER M12	4
16	LOCK NUT M12 8	4
17	LOCK NUT M8 8	2
18	EYEBOLT LB M8X80 DIN444	1
19	HEX. NUT M8 8	2
20	HEX. SCREW M8X35 8.8	1
21	CHAIN 2,8 D5686 9 GL A3C	1
22	S-HOOK	1
23	RING	1
24	FEDERSTECKER 5 DIN 11024	1
25	FLANGED BUSH CAT.2	1
26	FIXING PIN CAT.2	1

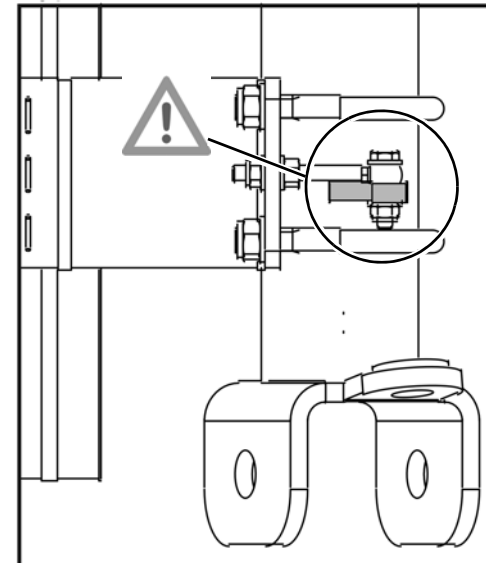


# Assembling, details type A

Machine type VF6930 – 7,60m tedder

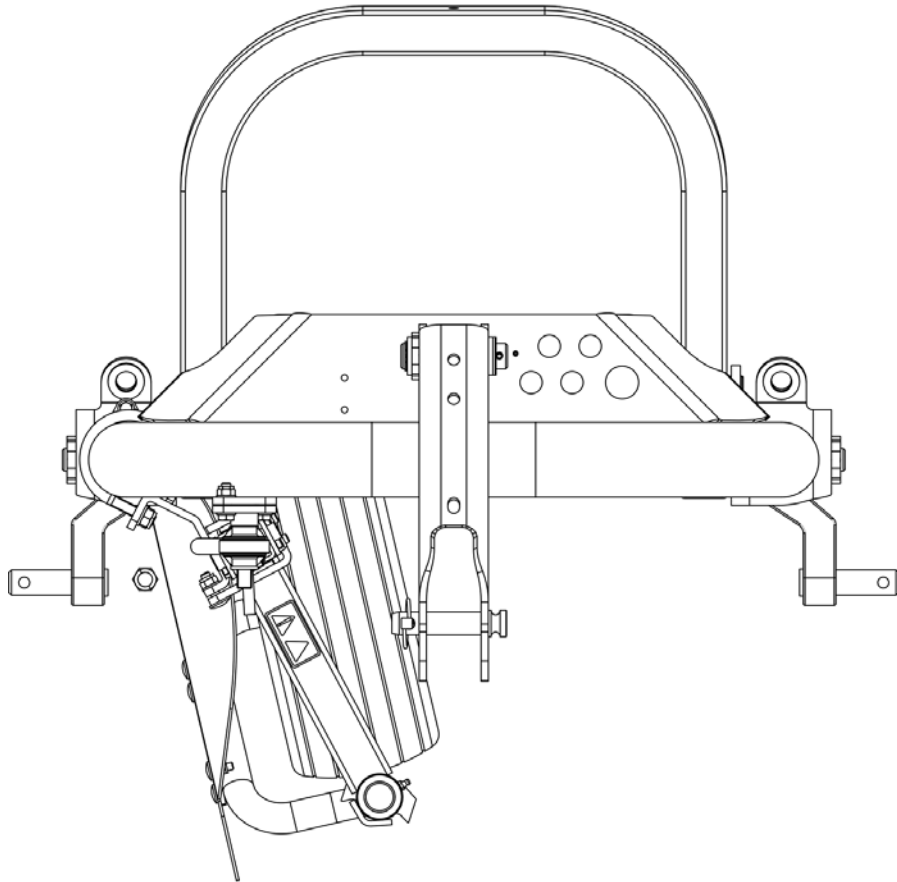


Machine type VF6929 – 6,80m tedder,  
Machine type VF6931 – 9,00m tedder (model year - 2018)



# Assembling, details type A

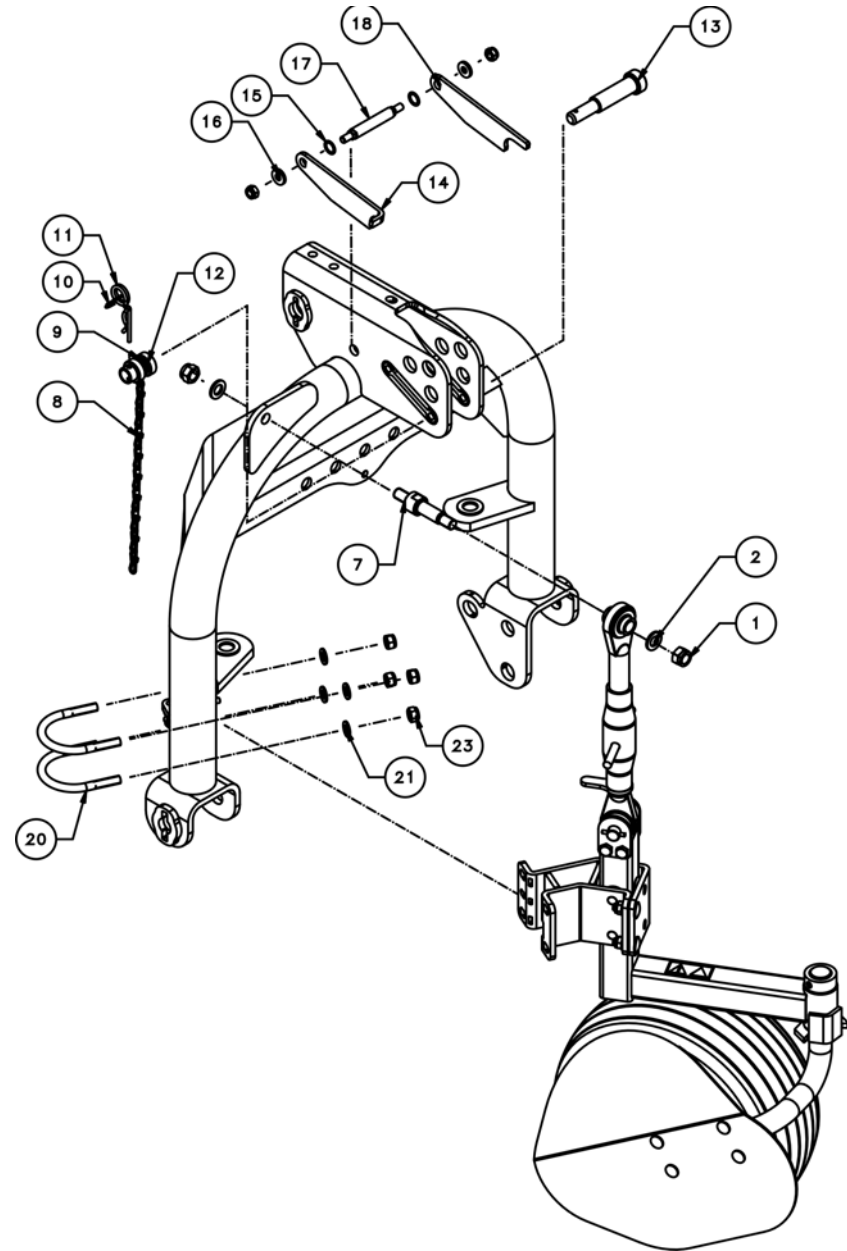
Top view



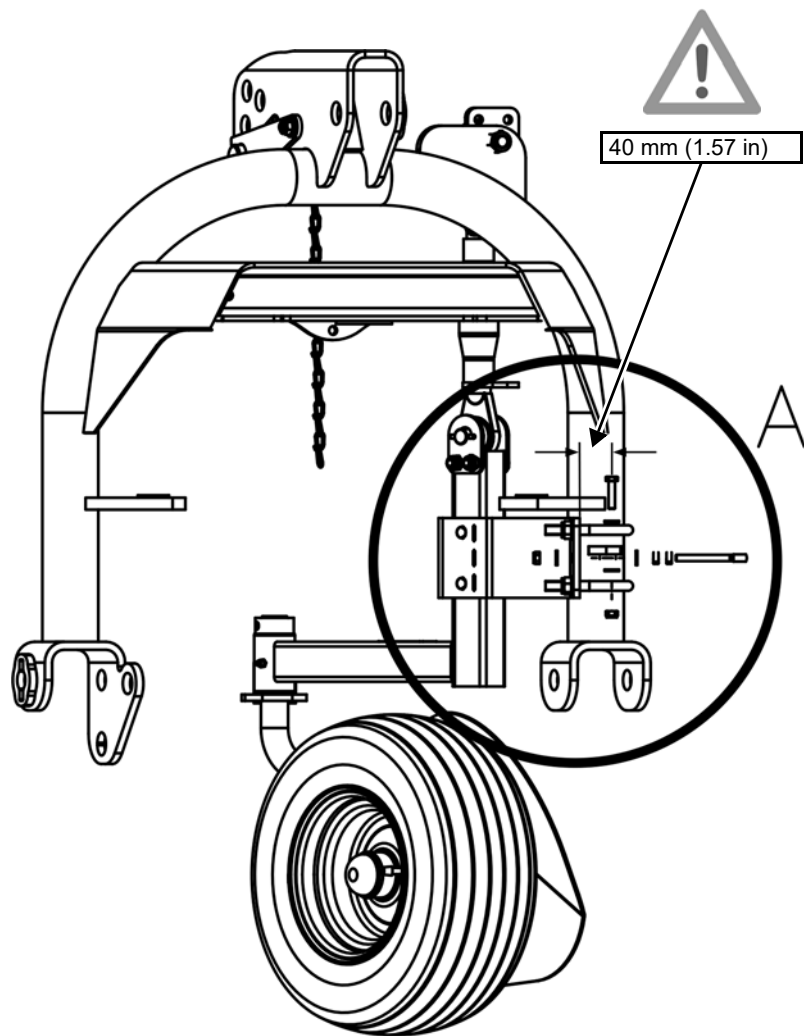
# Assembling type B

(A13117330)

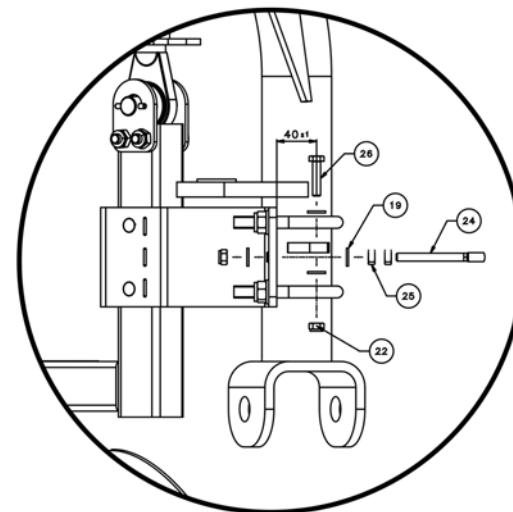
NR.	PART	QUANTITY
1	LOCK NUT M16 8	2
2	WASHER M16	2
3	LOCK NUT M10 8	4
4	WASHER M10	4
5	HEX. SCREW M10X35 8.8	2
6	PLATE WELDED	1
7	PIN	1
8	CHAIN 2,8 D5686 9 GL A3C	1
9	S-HHOOK	1
10	RING	1
11	FEDERSTECKER 5 DIN 11024	1
12	FLANGED BUSH CAT.2	1
13	FIXING PIN CAT.2	1
14	CONNECTING PLATE RI	1
15	SCHEIBE 22X16X1	2
16	WASHER M10	2
17	PIN	1
18	CONNECTING PLATE LE	1
19	WASHER 9X18X2	4
20	YOKE SCREW	2
21	WASHER M12	4
22	LOCK NUT M8 8	2
23	LOCK NUT M12 8	4
24	EYEBOLT LB M8X80 DIN444	1
25	HEX. NUT M8 8	2
26	HEX. SCREW M8X35 8.8	1



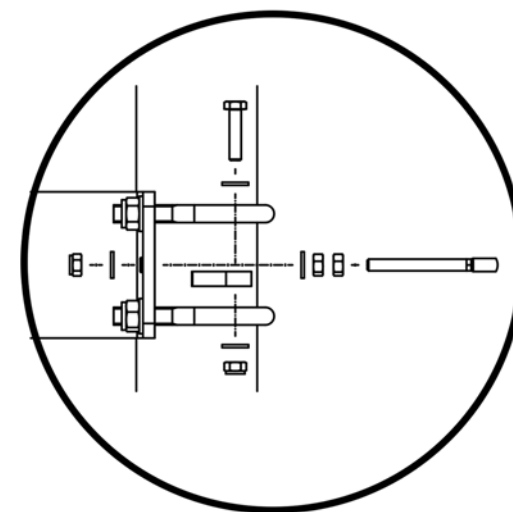
# Assembling, details type B



Machine type:  
VF6590, VF6922,  
VF6597, VF6927 (model year - 2016)

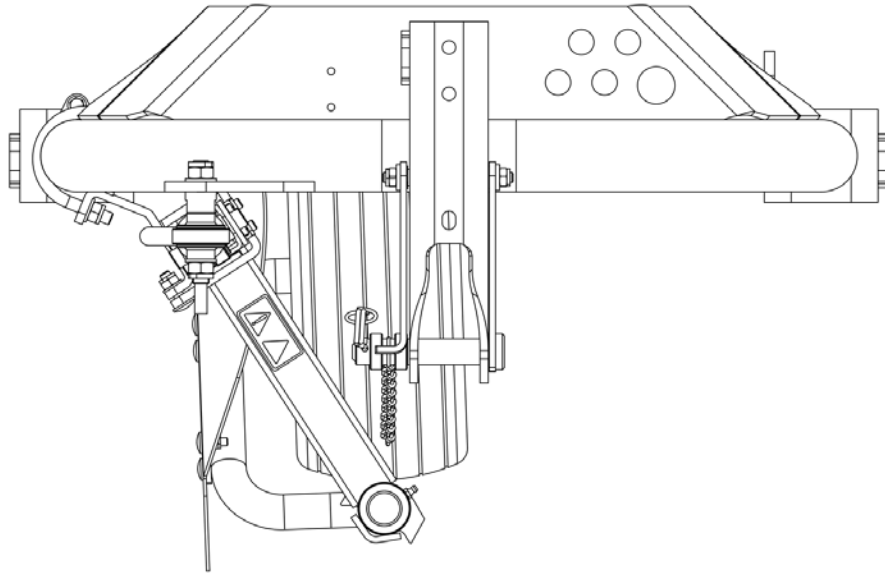


Machine type:  
VF6927 (model year from 2017)



# Assembling, details type B

Top view



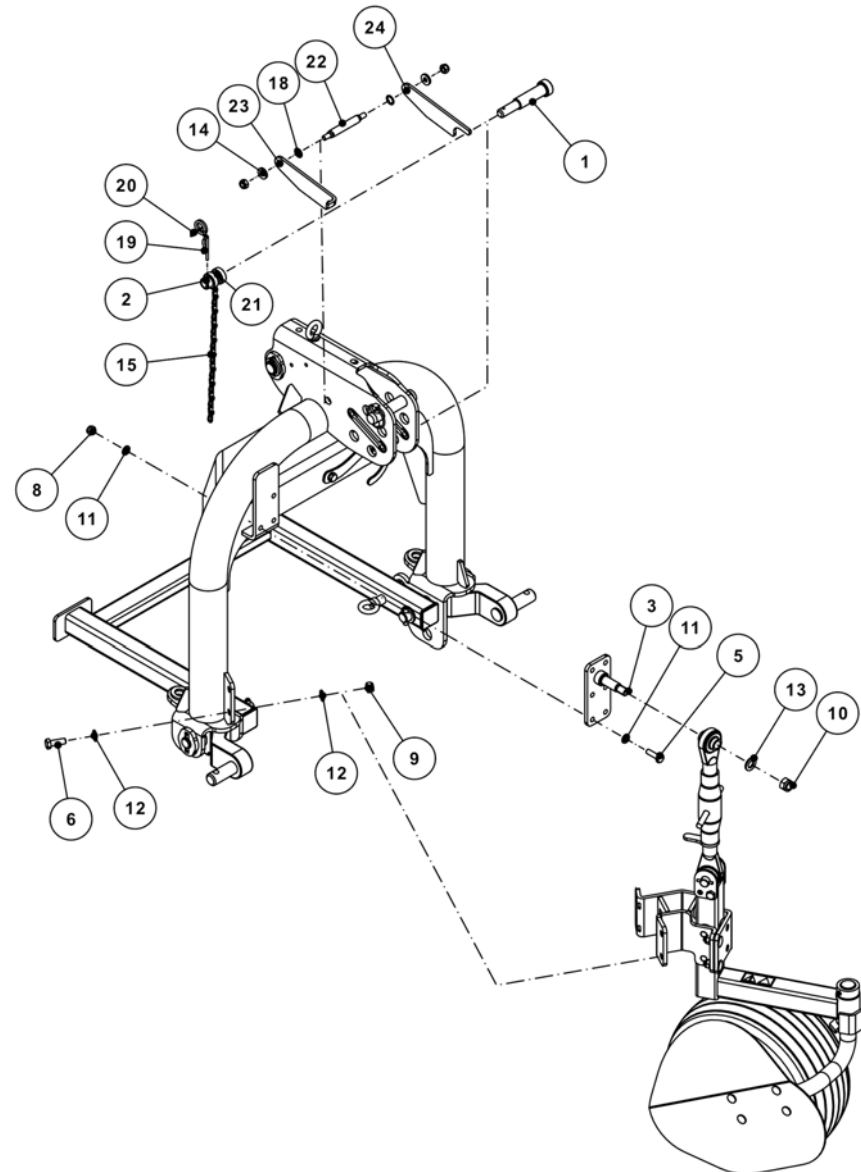
# Assembling type C

(A145526430)

Machine type VF6931 – 9,00m tedder (model year - 2019)

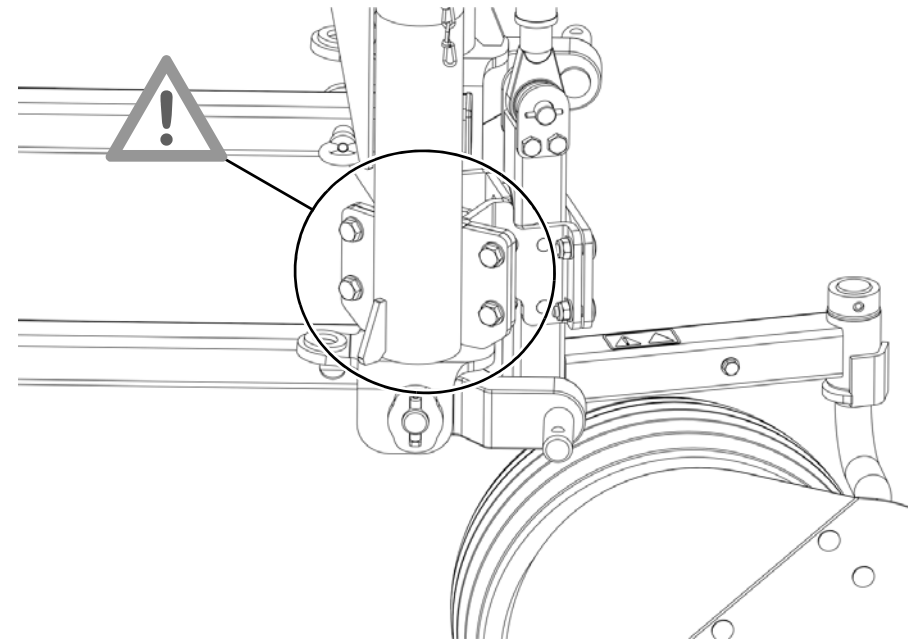
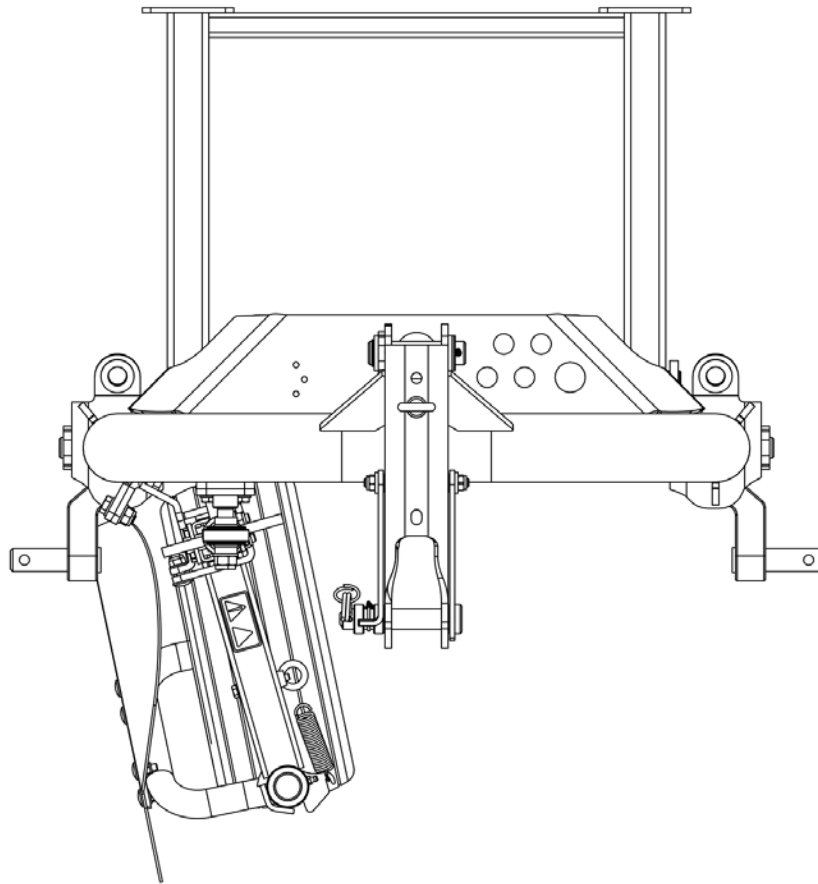
Machine type VF6932 – 11,20m tedder

NR.	PART	QUANTITY
1	FIXING PIN CAT.2	1
2	FLANGED BUSH CAT.2	1
3	PLATE WELDED	1
4	HEX. BOLT M10X75 8.8	1
5	HEX. SCREW M10X35 8.8	3
6	HEX. SCREW M12X35 8.8	4
7	LOCK NUT M8 8	4
8	LOCK NUT M10 8	6
9	LOCK NUT M12 8	5
10	LOCK NUT M16 8	1
11	WASHER M10	6
12	WASHER M12	8
13	WASHER M16	1
14	WASHER M10	2
15	KETTE 2,8 D5686 9 GL A3C	1
16	SCHEIBE 13x30x4	1
17	WASHER 9x18x2	4
18	SCHEIBE 22x16x1	2
19	FEDERSTECKER 5 DIN 11024	1
20	RING	1
21	S-HOOK	1
22	PIN	1
23	CONNECTING PLATE LE	1
24	CONNECTING PLATE RE	1



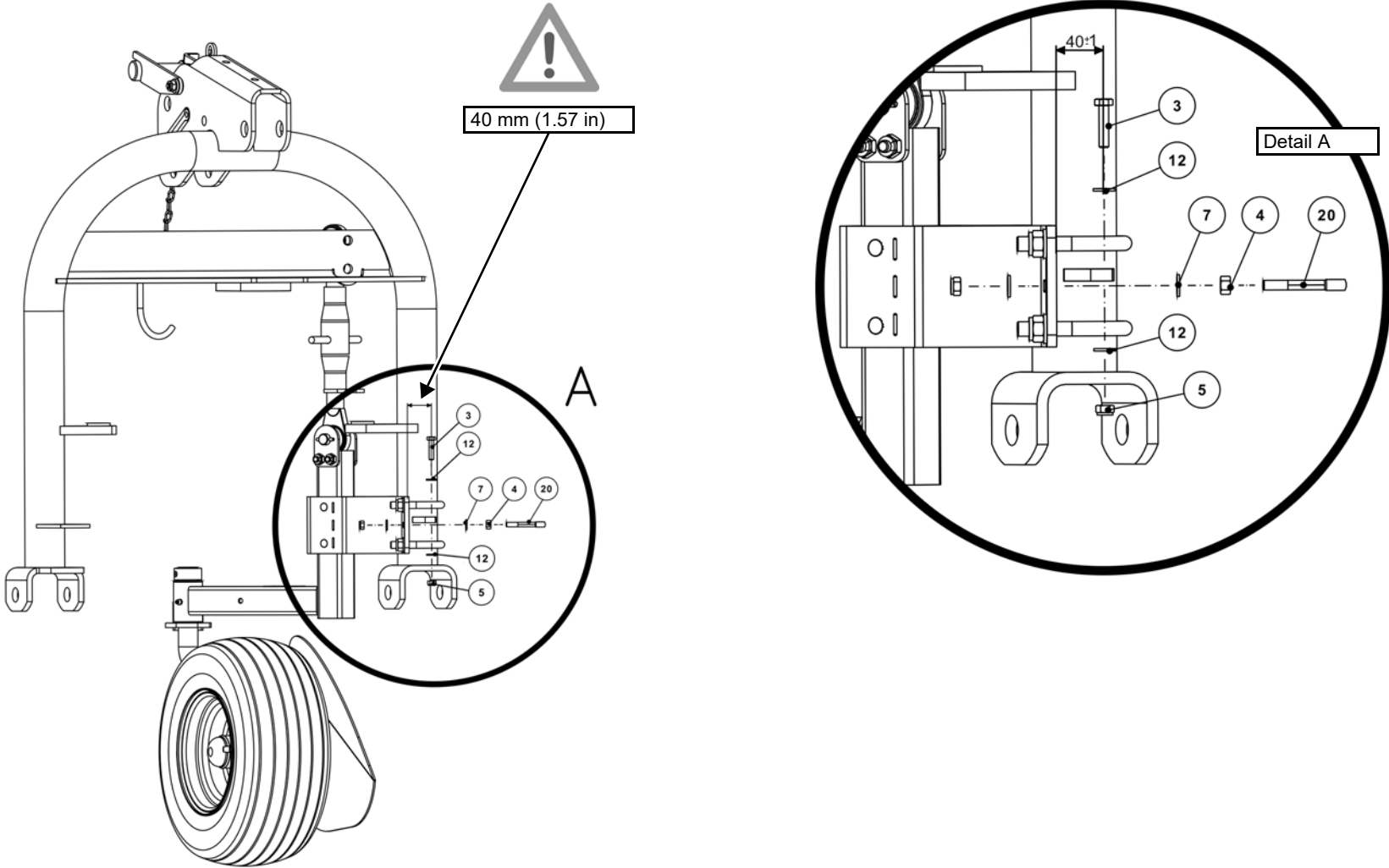
# Assembling, details type C

Top view



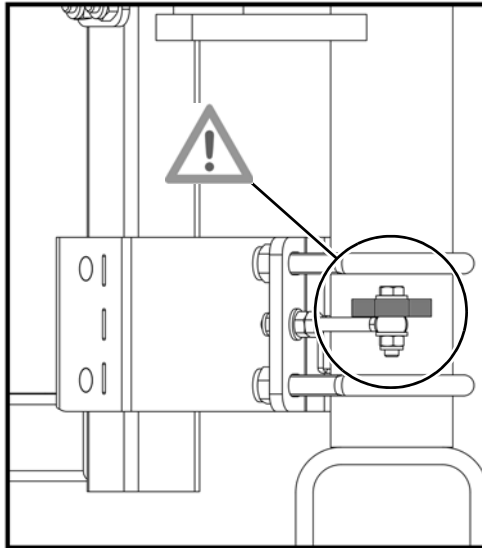


# Assembling, details type D

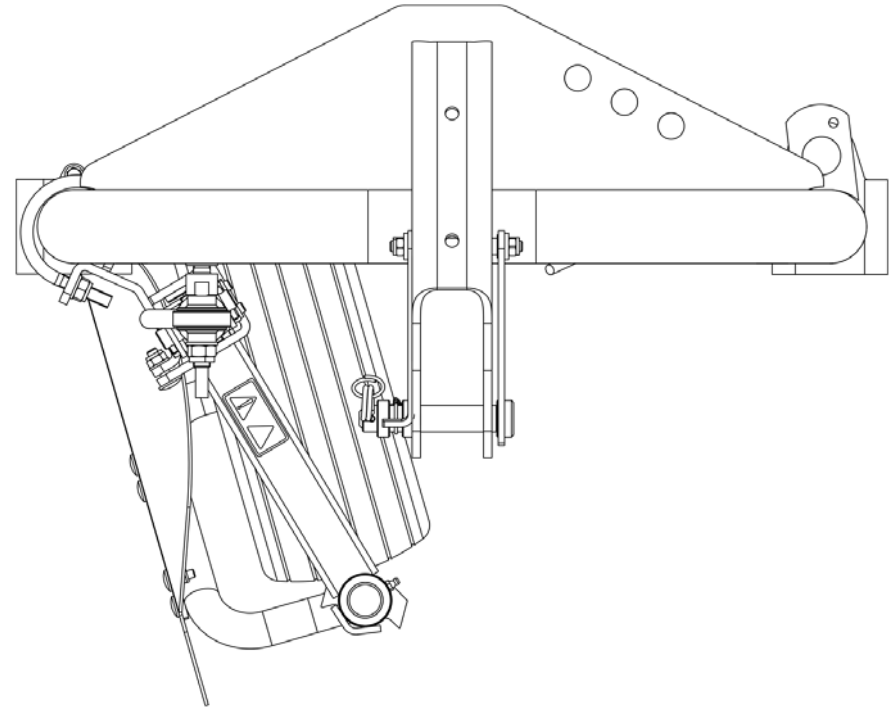


## Assembling, details type D

Machine type VF6583, VF6959, VF6589, VF6582, VF6950, VF6957



Top View



Machine type VF6591

