



MAIZE CHOPPER

KE 120 SINGLE ROW MAIZE CHOPPER ASSEMBLY MANUAL

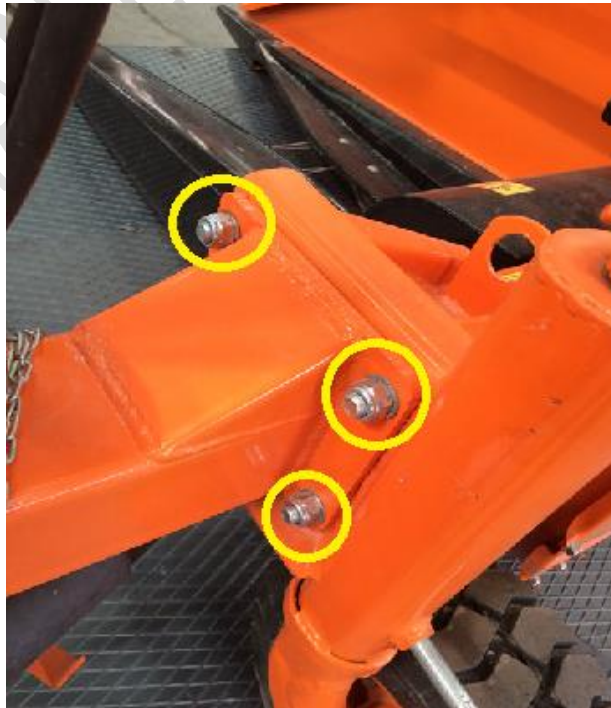


1. Body Assembly

- Place the support wheel between the mounting body and chopper unit as shown on the photo



- Tighten the connection bolts



- Place the cover of the drum and use shaft for connection



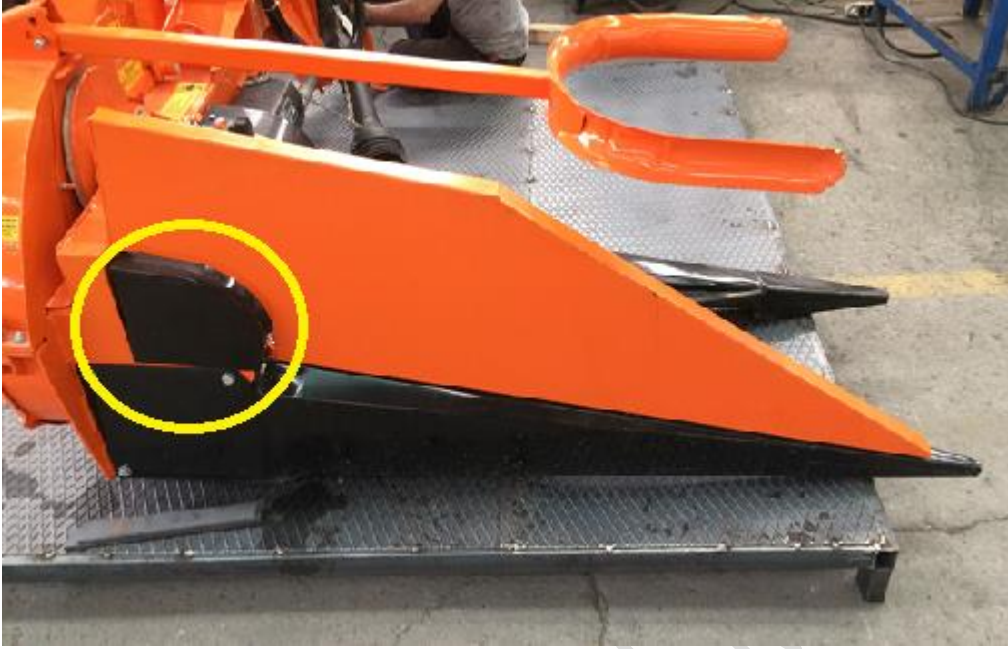
- Secure the cover



- Place the chute first, secure it with shaft and the thighten the bolt shown on the photo



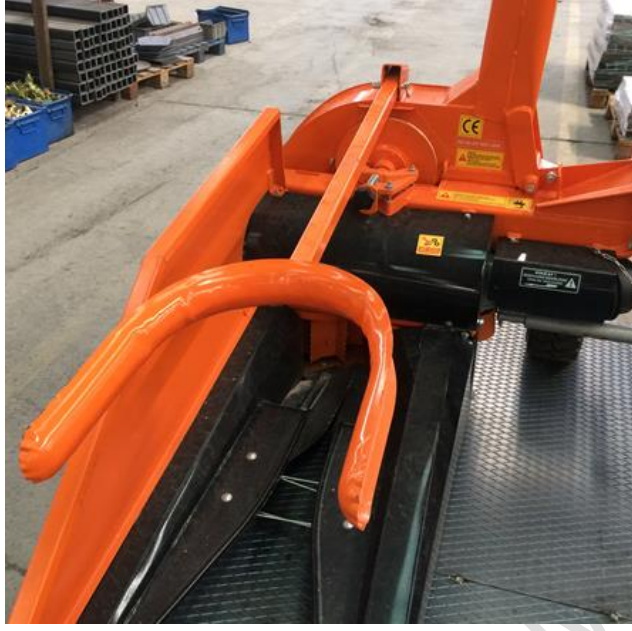
- Place the side body and attach the bolts to main body



- Secure the connection by tightening 3 bolt shown on the photo

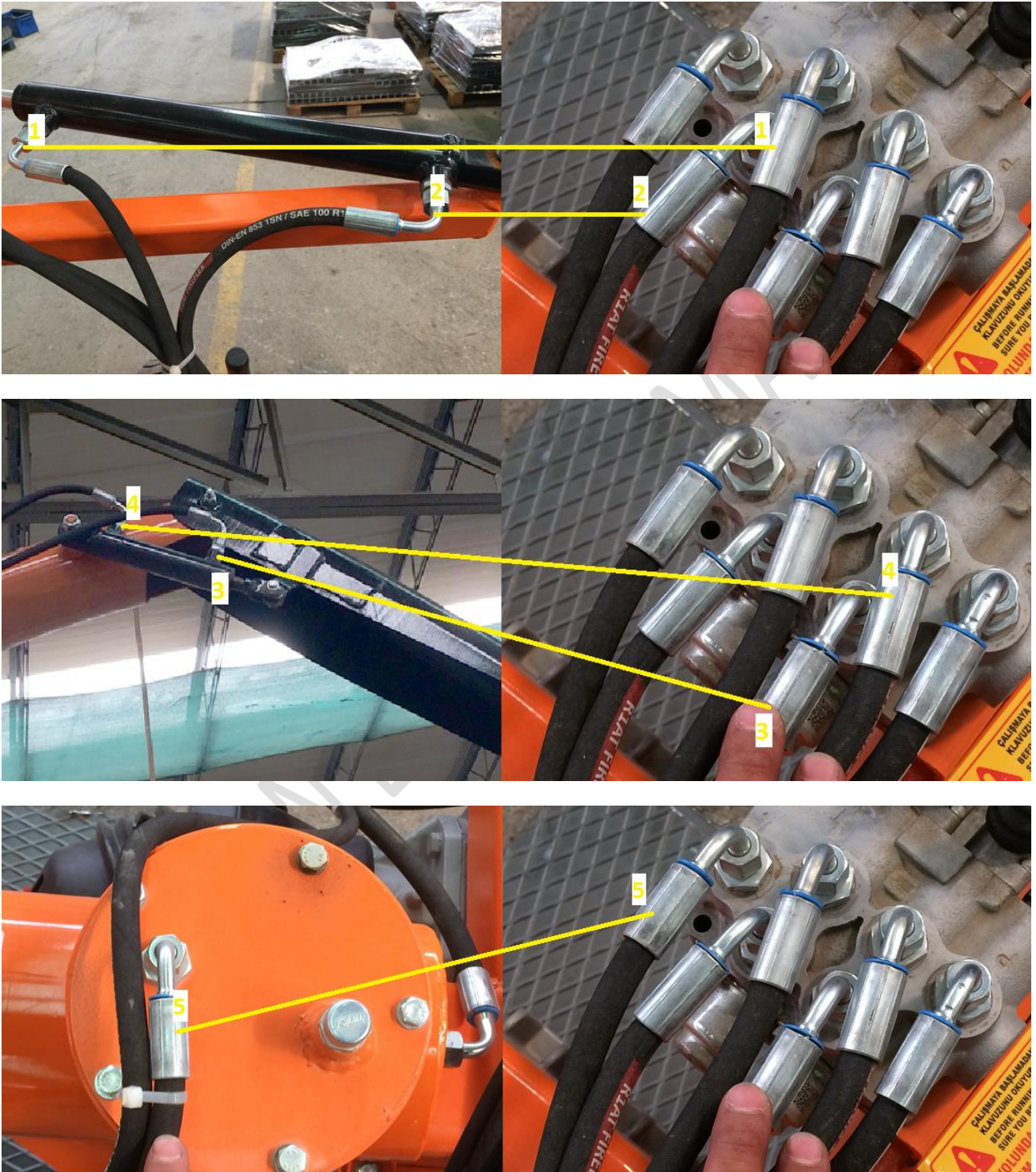


- Connect the corn fork by its pin to desired height



2. Hydraulic Connection

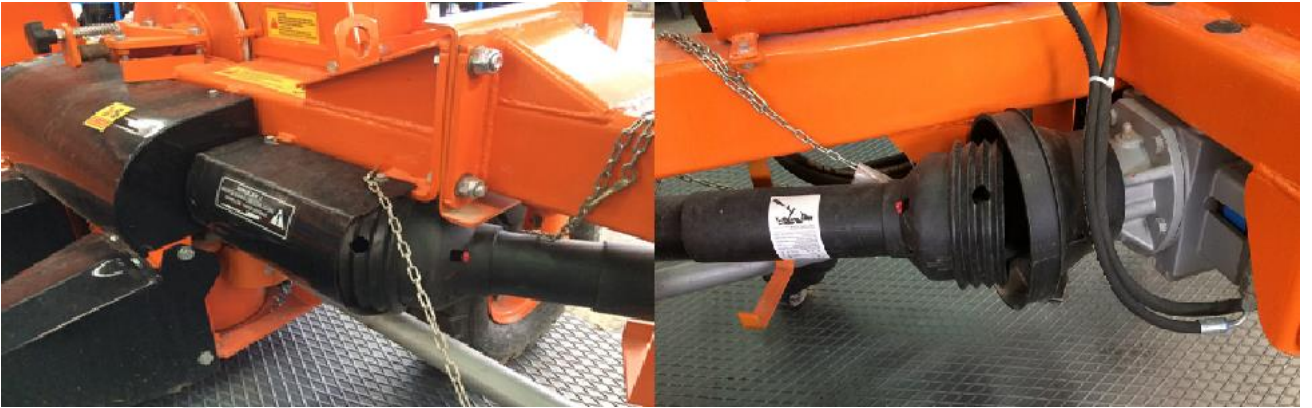
- Please make the hydraulic connections to valve as shown on the photos





3. PTO Shaft Connection

- Two linkage PTO shaft connection





ORGANİZE SANAYİ BÖLGESİ 15040
BURDUR

TEL : +90 248 252 97 05 Pbx

FAX : +90 248 252 97 10

e-mail : kayhanertugrul@kayhanertugrul.com.tr

www.kayhanertugrul.com.tr