

9032

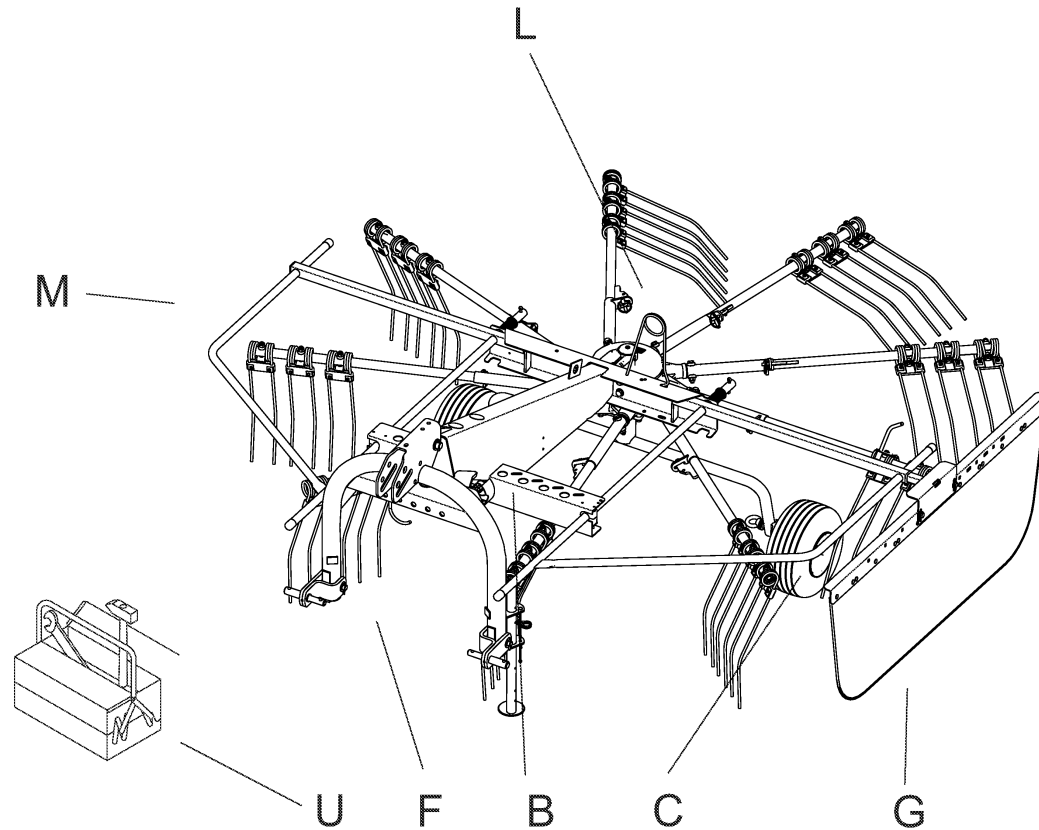
Spare Parts Manual

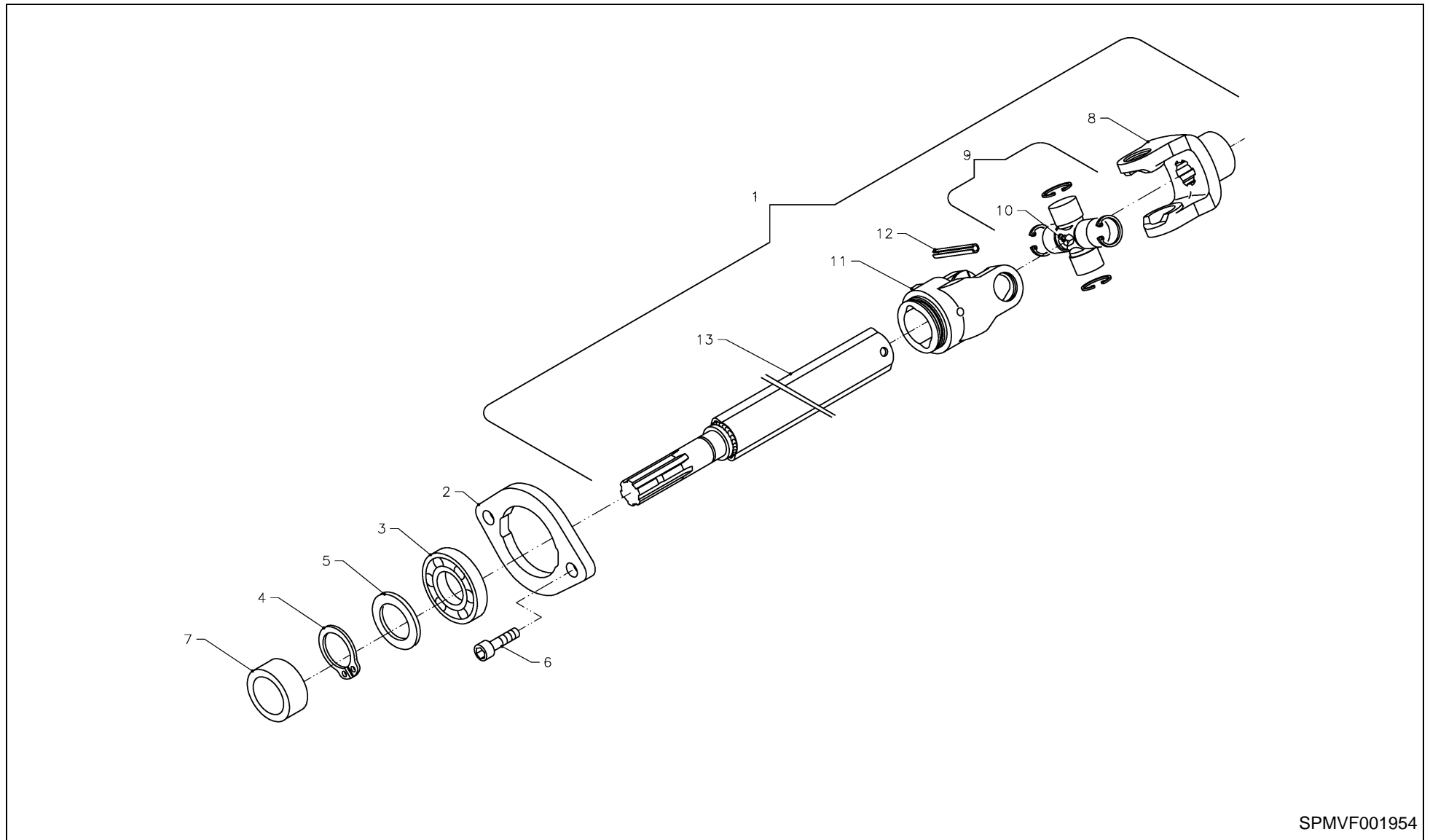
Article number: A131441340
Language: EN
Production year (from): 2015
Prod. Series nr (from): 6589
VF65892901 < Mach. ID <=

9032 / Table of Contents



PosNo.	Assembly group	Page
B	INTERMEDIATE SHAFT ZW 2300	1
B	DRIVE SHAFT	2
B	GEAR BOX	3
C	ROTOR CHASSIS	4
C	TANDEM AXLE (OPTION)	5
C	TYRES 15 X 6,0 - 6 (2 PCS.)	6
C	SUPPORT WHEEL (OPTION)	7
C	TYRES 16 X 6,5 - 8 (OPTION)	8
F	3 POINT LINKAGE	9
F	FRAME	10
F	DOCUMENT BOX	11
F	LOCKING DEVICE FOR WORK AT SLOPES (OPTION)	12
G	SWATH FORMER	13
H	LIGHTING EU/OTHERS (OPTION EU/OTHERS)	14
L	TINE SUPPORT	15
M	GUARD	16
M	WARNING PANEL (OPTION EU/OTHERS)	17
U	WARNING DECAL EU/OTHERS (EU/OTHERS VERSION)	18
U	DECAL + PAINT	19



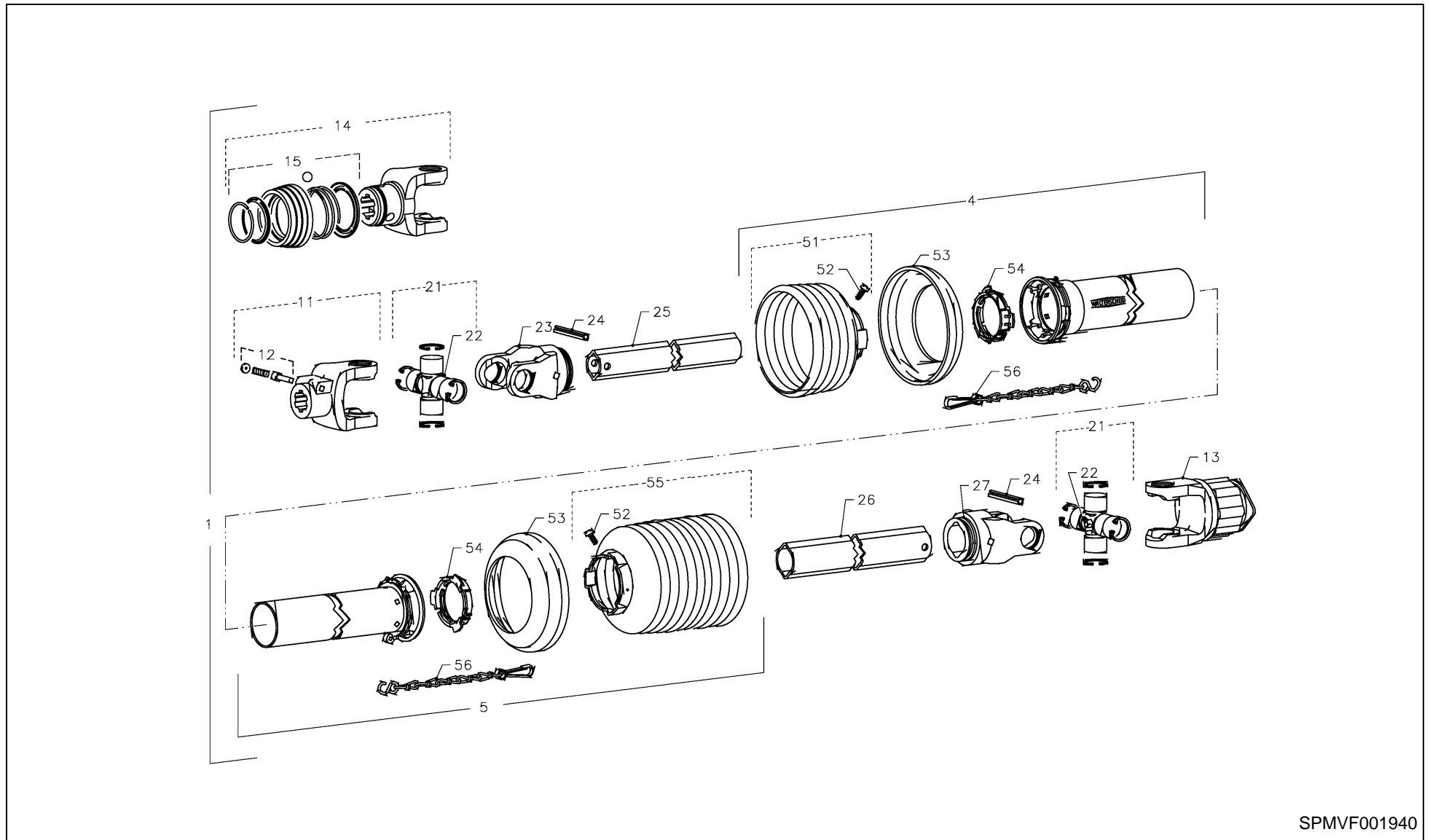


SPMVF001954

9032 / INTERMEDIATE SHAFT ZW 2300



PosNo.	Part No.	Qty.	Description	Remark
1	VF16604026	1	INTERM. SHAFT ZW2102 926 6730502 1022219	
2	VF16605848.61	1	FLANGE HOUSING FOR Y207	
3	VF06215767	1	BALL BEARING 207 NPPB	
4	KG01099300	1	CIRCLIP-A 35 X 2.5	
5	KT99350525	1	WASHER 35X45X2,5 DIN988	
6	VF16624100	2	SCR. M10X40D912 8.8 GALV.D267-27+LACKS.N	
7	VF16606236	1	SPACER TUBE	
8	VF16606185	1	FORK	
9	VF16504064	1	JOINT CROSS	
10	KG02000600	1	GREASE NIPPLE M8X1X135 DEG	
11	KG02002700	1	INBOARD YOKE RG2200-1	
12	VF01157382	1	ROLL PIN 10X65 EN ISO 8752 ZN.FL.	
13	VF16606720	1	INTERMED.SHAFT HALF	

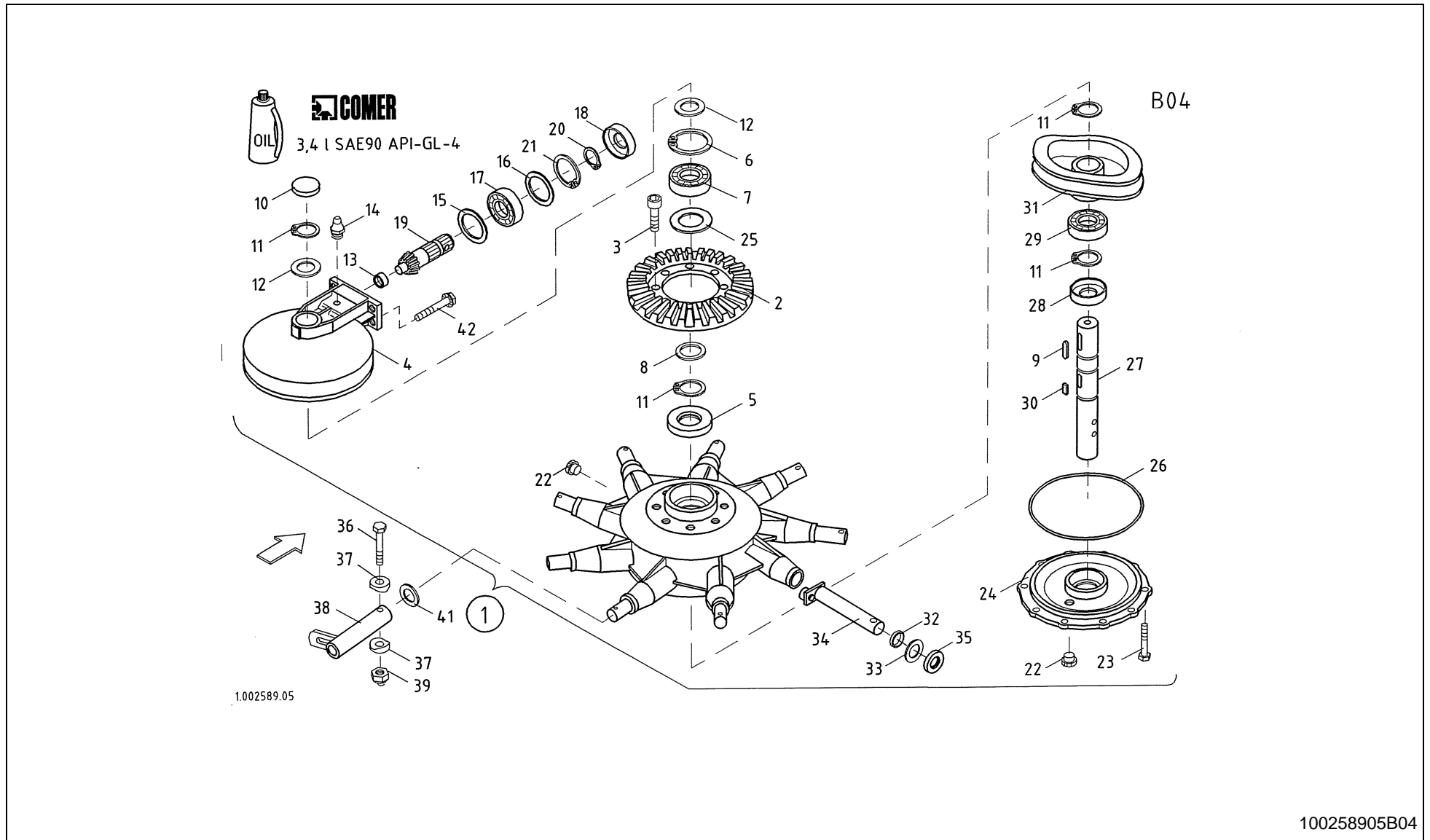


SPMVF001940

9032 / DRIVE SHAFT



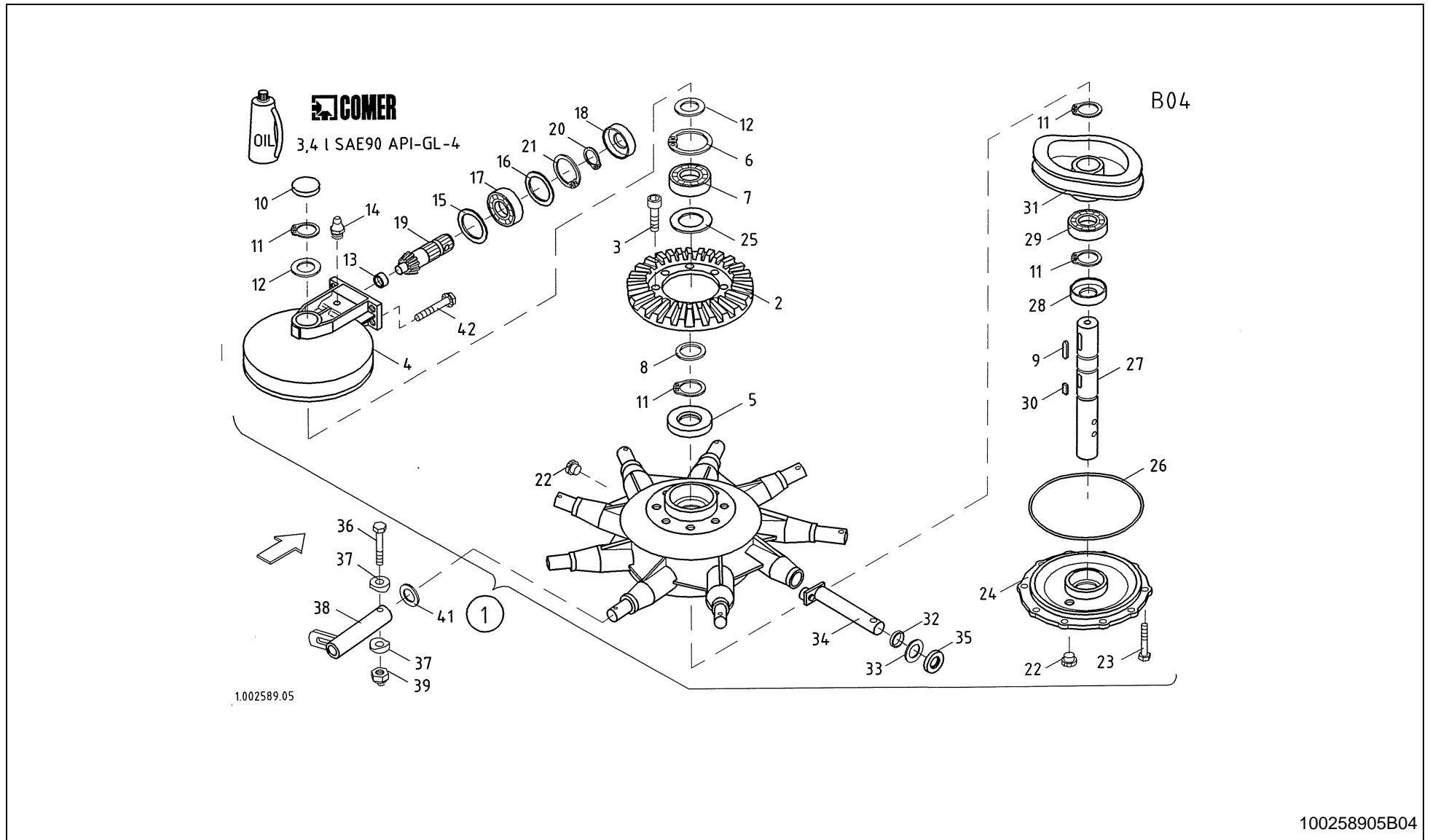
PosNo.	Part No.	Qty.	Description	Remark
1	VF16605557.97	1	PTO DRIVE SHAFT INCL CAM CLUTCH	
4	WA116967	1	OUTER PROTECTING HALF BLACK	
5	WA116968	1	INNER GUARD HALF BLACK	
11	VF06582596	1	JOINT FORK	
12	KG02008000	1	PUSH PIN ASSY. 1 3/8"	
13	VF16606699	1	SAFETY CLUTCH	
14	VF16625107	1	FORK	
15	VF16625102	1	LOCK ASE COMPLETELY	
21	WA116401	2	CROSS AND BEARING KIT COMPLETE	
22	VG63.27.00	2	GREASE NIPPLE BM8X1	
23	VF06580486	1	JOINT FORK	
24	KG01192062	2	TENSION PIN 8X50	
25	KG02000800	1	PROFILE TUBE 00C-1000	
26	WA085702	1	PROFILED TUBE 0A-1000	
27	VF06580488	1	UNIVERSAL JOINT FORK RG 2100 PR0A SC05	
51	WA153821	1	PROTECTIVE CONE BLACK RP5	
52	KG00742063	2	TAPPING SCREW 3.5X9.5 4.8	
53	VF06586719	2	SUPPORT RING	
54	VF06586718	2	SLIDING RING	
55	WA156032	1	PROTECTIVE CONE N=RP12 BLACK	
56	KG02001500	2	SAFETY CHAIN L=400MM	



9032 / GEAR BOX



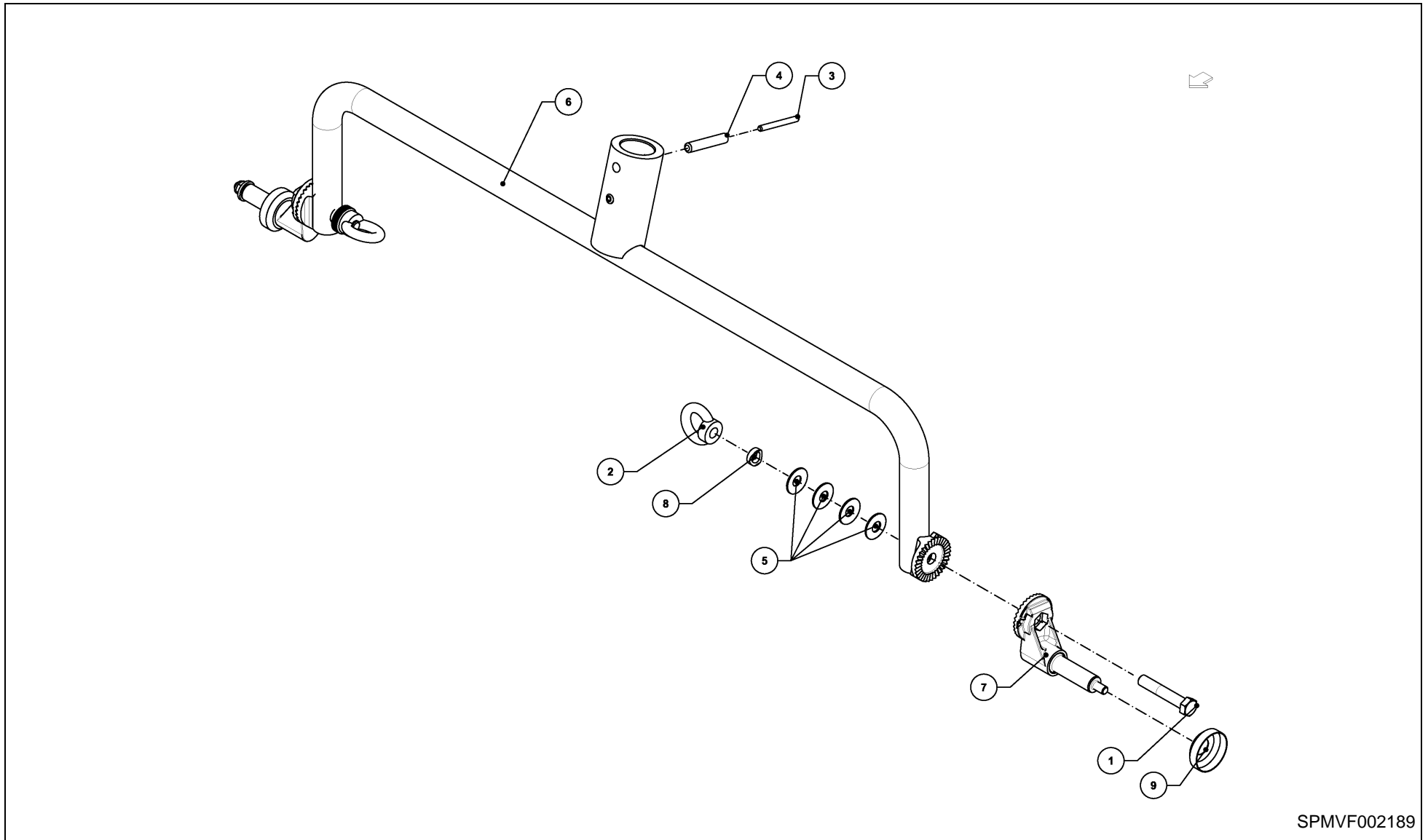
PosNo.	Part No.	Qty.	Description	Remark
1	VF16624056.94	1	GEAR BOX 9 ARMS OIL-PAINTED	
2	VF16606691	1	CROWN WHEEL	
3	KG00546761	8	CHEESE HEAD SCREW M10X20 8.8	
4	VF16608475.94	1	GEARBOX COVER	
5	VF16622966	1	SEAL RING	
6	KG01132300	1	CIRCLIP-B 110 X 4	
7	VF16606690	1	BALL BEARING	
8	VF06214504	1	SPACER 50X62X1 D988	
8	VF01132688	1	SPACER 50X62X0,5 D988	
9	VF01139148	1	FITTING KEY	
10	VF16608470	1	CAP	
11	KG01100100	4	CIRCLIP-A 50 X 3	
12	VF01133287	2	SHIM 50X62X3,0 DIN988 A2C	
13	VF16606692	1	NEEDLE BEARING	
14	VF01120694	1	GREASE NIPPLE	
15	VF01397656	1	SHIM	
15	VF01397656	1	SHIM	
16	VF01137526	1	WASHER	
16.1	VF01137725	1	SPACER 35X45X0,1	
16.2	VF01137726	1	SPACER 35X45X0,2	
16.3	VF01137727	1	SPACER 35X45X0,3 D988	
17	KG01381900	1	BALL BEARING 6207	
18	KG00132500	1	RADIAL SHAFT SEAL - AS 35X72X10	
19	VF16606693	1	PINION SHAFT	
20	KG01109362	1	CIRCLIP-A 35 X 1.5	
21	KG01130500	1	CIRCLIP-B 72 X 2.5	
22	VF16608479	2	OIL DRAIN PLUG 3+8" GAS	
23	KG00474261	6	HEX. SCREW M10X25 8.8	
23	VF01173914	10	SCR. M10X25D933 8.8 GALV. DIN267-27	
24	VF16622900.94	1	GEARBOX COVER	
25	VF06214535	1	SPACER	
25	VF06214536	1	SPACER	
26	VF16602632	1	O-RING	
27	VF16622985	1	SHAFT	
28	KG00161100	1	RADIAL SHAFT SEAL - AS 50X72X8	
29	KG01384600	1	BALL BEARING 6210	
30	VF06212528	1	FITTING-KEY	
31	VF16608477	1	CONTROL DISC	
32	VF16608478	9	SPACER RING	
33	VF16608480	9	SHIM	



9032 / GEAR BOX



PosNo.	Part No.	Qty.	Description	Remark
34	VF16622984	9	CONNECTING ROD	
35	KG00043700	9	RADIAL SHAFT SEAL - A 35X45X7	
36	VF01111524	9	HEX.BOLT M12X75 109 FLZNNC480H DIN 931	
37	VF16640417	18	SHIM	
38	VF16624055.86	9	CLAMP PIPE WELDED	L=210
39	KG01068961	9	LOCK NUT M12 10	
41	VF06214329	9	WASHER-100HV-TOLDIN522-A-(ZSM)-36X51X3	
42	VF16608183	4	RIPP SCR. M14X40 100 GALV.	

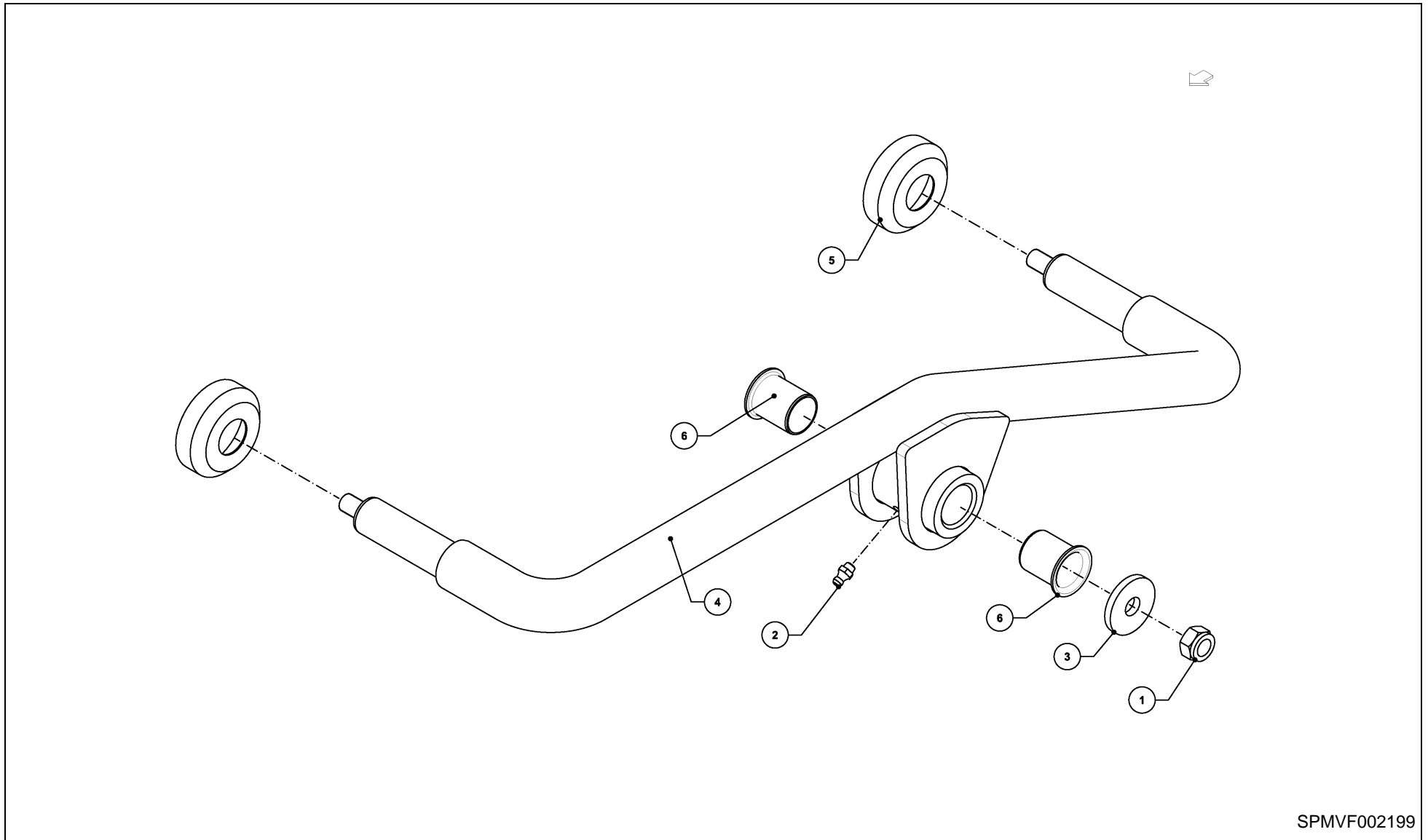


SPMVF002189

9032 / ROTOR CHASSIS



PosNo.	Part No.	Qty.	Description	Remark
1	KG00362661	1	HEX. BOLT M16X90 8.8	
2	KG01094261	1	LIFTING EYE NUT M16 C15	
3	KG01192362	1	TENSION PIN 8X80	
4	KG01197162	1	TENSION PIN 14X80	
5	VF06210723	1	CUP SPRING DIN 2093 40X16,3X2,0X3,1	
6	VF16605323.86	1	FRAME WELDED	
7	VF16605357.86	1	WHEEL AXLE WITH TOOTHED RING	
8	VF16608185	1	SHIM FOR M 16 + R 21	
9	VF16622598	2	ANTI WRAPPING DEVICE MEFRO 15"+16" ZN	

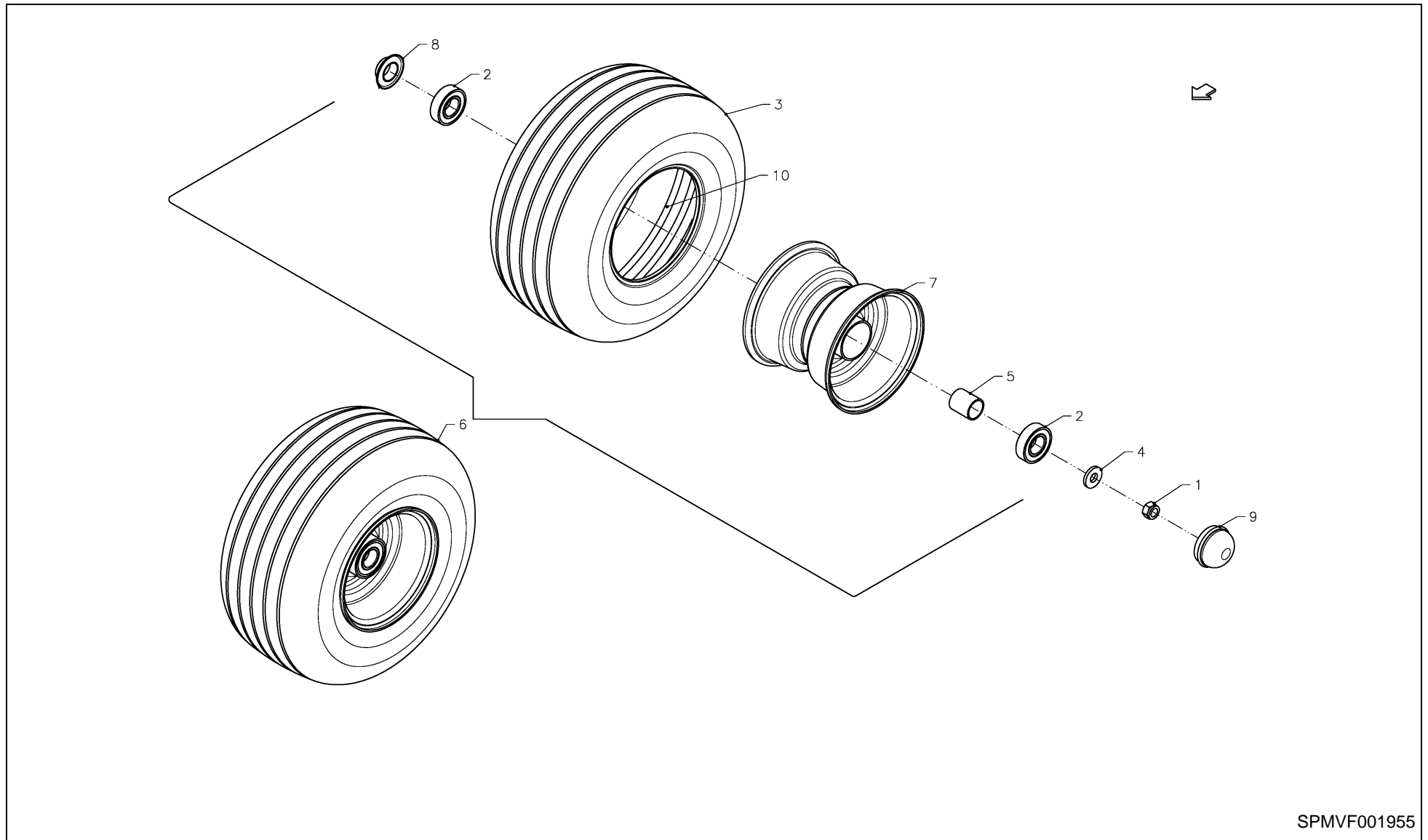


SPMVF002199

9032 / TANDEM AXLE (OPTION)



PosNo.	Part No.	Qty.	Description	Remark
1	KG01067761	1	LOCK NUT M12 8	
2	VF01120693	1	GREASE FITTING H1 AM 8X1 DIN 71412	
3	VF06214210	1	WASHER 13X40X5 GALV.	
4	VF16606486.86	1	TANDEM AXLE	
5	VF16622598	2	ANTI WRAPPING DEVICE MEFRO 15"+16" ZN	
6	VF16623149	2	FLANGED BUSH WFM-2528-34S WH. LOW-MAINT.	



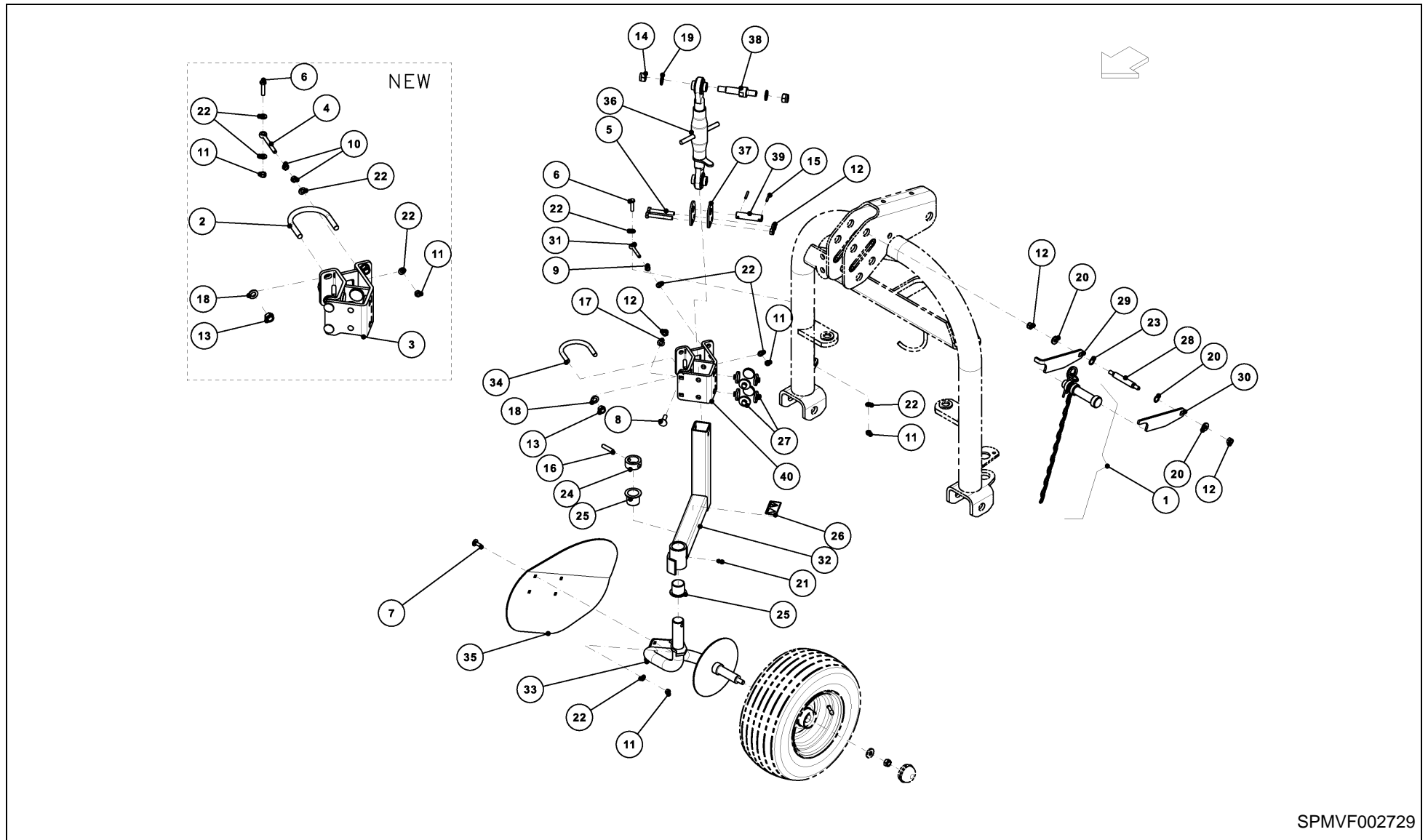
SPMVF001955

9032 / TYRES 15 X 6,0 - 6 (2 PCS.)



PosNo.	Part No.	Qty.	Description	Remark
1	KG01067761	1	LOCK NUT M12 8	
2	KG01476400	2	BALL BEARING 6205-2RS C3	
3	VF01141364	1	TIRE 15X6.00-6 6PR TT C737	
4	VF06214206	1	WASHER 13X30X4 RM=580-680 MPA A2C	
5	VF06249879	1	SPACER	
6	VF06564733	1	CPL. WHEEL 15X6.0-6 TT 6PR SILVER RIM	
7	VF06564735	1	RIM 4.50 AX6 SILVER	
8	VF06567492	1	BUSH D25+31,5 L13,5	
9	VF06580546	1	CAP	
10	VF01141365	1	INNER TUBE 15X6,00X6 TR13	

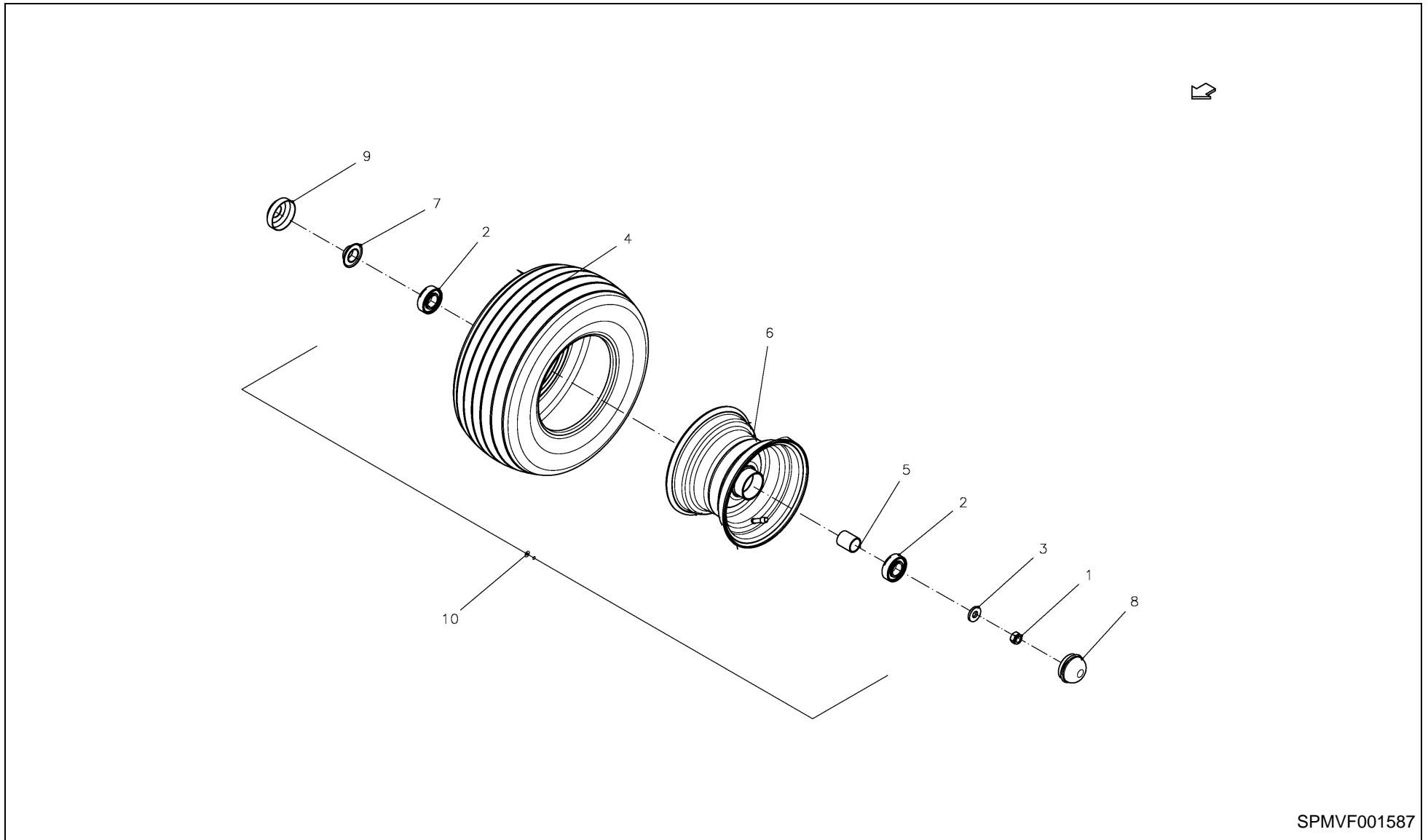
9032 / SUPPORT WHEEL (OPTION)



SPMVF002729

9032 / SUPPORT WHEEL (OPTION)

PosNo.	Part No.	Qty.	Description	Remark
1	A131109530	1	FIXING PIN CAT.2 MOUNTED	
2	A131114561	2	YOKE SCREW	
3	A131117986	1	SUPPORT WELDED	
4	A131440261	1	EYE BOLT DIN444 LB M8X80 8.8 GALV.	
5	KG00355961	2	HEX. BOLT M10X75 8.8	
6	KG00472361	2	HEX. SCREW M8X35 8.8	
7	KG00639161	4	CARRIAGE BOLT M8X25 8.8	
8	KG00641661	4	CARRIAGE BOLT M10X35 8.8	
9	KG01047361	1	HEX. NUT M8 8	
10	KG01051961	2	HEX. NUT M8 8	
11	KG01067561	8	LOCK NUT M8 8	
12	KG01067661	8	LOCK NUT M10 8	
13	KG01067761	8	LOCK NUT M12 8	
14	KG01067961	2	LOCK NUT M16 8	
15	KG01188162	2	TENSION PIN 5X36	
16	KG01194062	1	TENSION PIN 10X45	
17	KG01267461	4	WASHER M10	
18	KG01267561	8	WASHER M12	
19	KG01267761	2	WASHER M16	
20	KG01273661	2	WASHER DIN7349 M10 A3C	
21	VF01168225	1	GREASE FITTING H1 SFG 8X1	
22	VF06214246	12	WASHER 9X18X2 GALV.	
23	VF06214287	2	WASHER 16X22X1 GALV.	
24	VF16608048	1	RING D48	
25	VF16608058	2	FLANGED BUSH 34X38+50X35	
26	VF16608362	2	GUL ADV. FARE FOR AT FOD KLEMMES	
27	VF16609210	16	SLIDING PAD BIG	
28	VF16621254	1	PIN	
29	VF16621257.61	1	CONNECTING PLATE	
30	VF16621258.61	1	CONNECTING PLATE	
31	VF16646648.61	1	EYE BOLT DIN444 LA M8X60 8.8 GALV.	
32	VF16648473.86	1	WHEEL AXLE WELDED	
33	VF16648511.86	1	AXLE WELDED	
34	VF16648522.61	2	YOKE SCREW	
35	VF16648554.86	1	GUARD PLATE	
36	VF16648785.61	1	TURNBUCKLE L360MM	
37	VF16648787.61	2	PLATE	
38	VF16648789.61	1	PIN	
39	VF16648795.61	2	PIN	
40	VF16649262.86	1	SUPPORT WELDED	

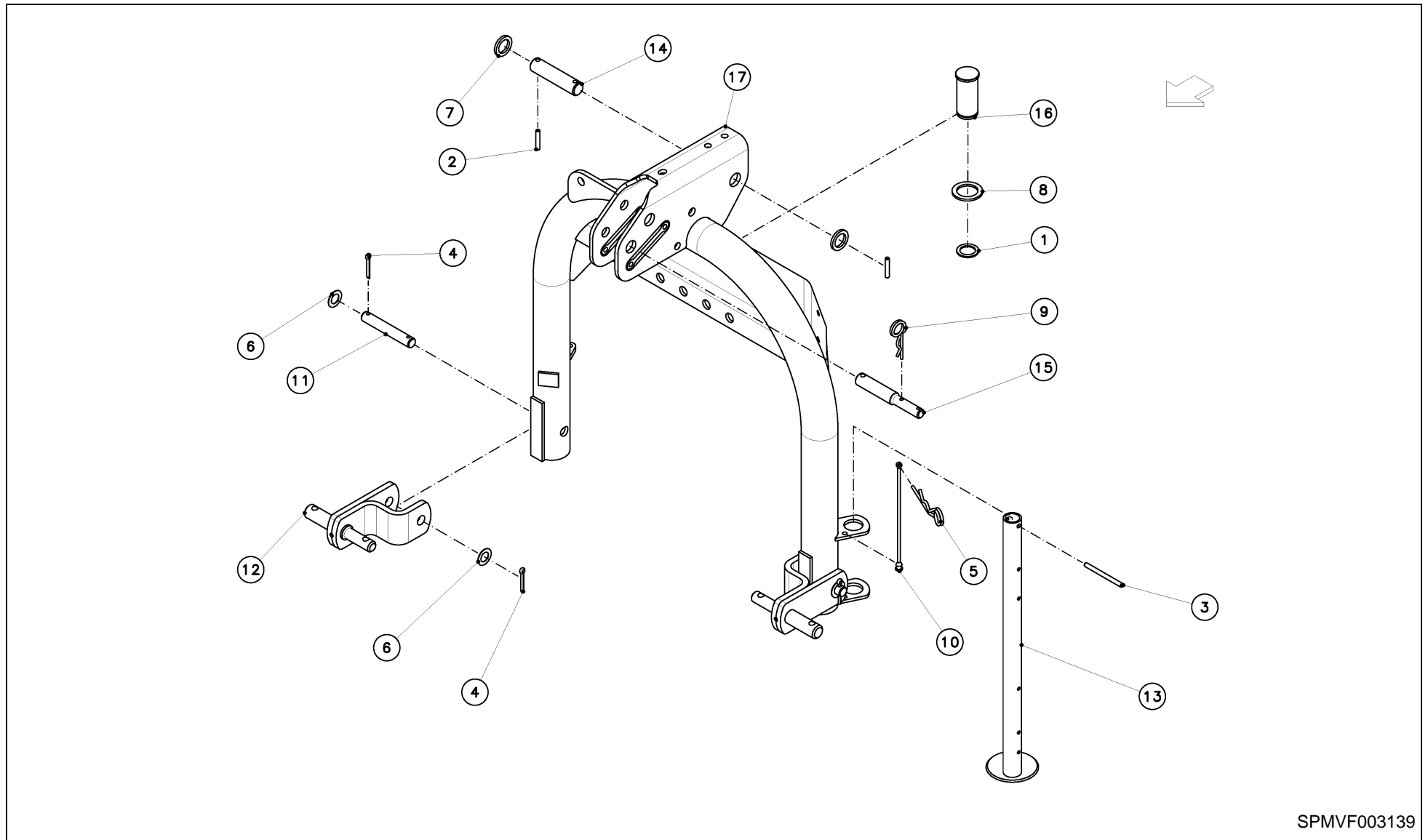


SPMVF001587

9032 / TYRES 16 X 6,5 - 8 (OPTION)



PosNo.	Part No.	Qty.	Description	Remark
1	KG01067761	1	LOCK NUT M12 8	
2	KG01379500	2	BALL BEARING 6205-RS	
3	VF06214206	1	WASHER 13X30X4 RM=580-680 MPA A2C	
4	A131653030	1	TIRE 16X6.50-8 10PR + TUBE	
5	VF06249879	1	SPACER	
6	VF06564451.98	1	RIM 5.50AX8 SILVER	
7	VF06567492	1	BUSH D25+31,5 L13,5	
8	VF06567493	1	WHEEL CAP D 52 H = 36 MM	
9	VF16622598	1	ANTI WRAPPING DEVICE MEFRO 15"+16" ZN	
10	VF06564096	1	CPL. WHEEL 16X6X8 TT 10PR SILVER RIM	

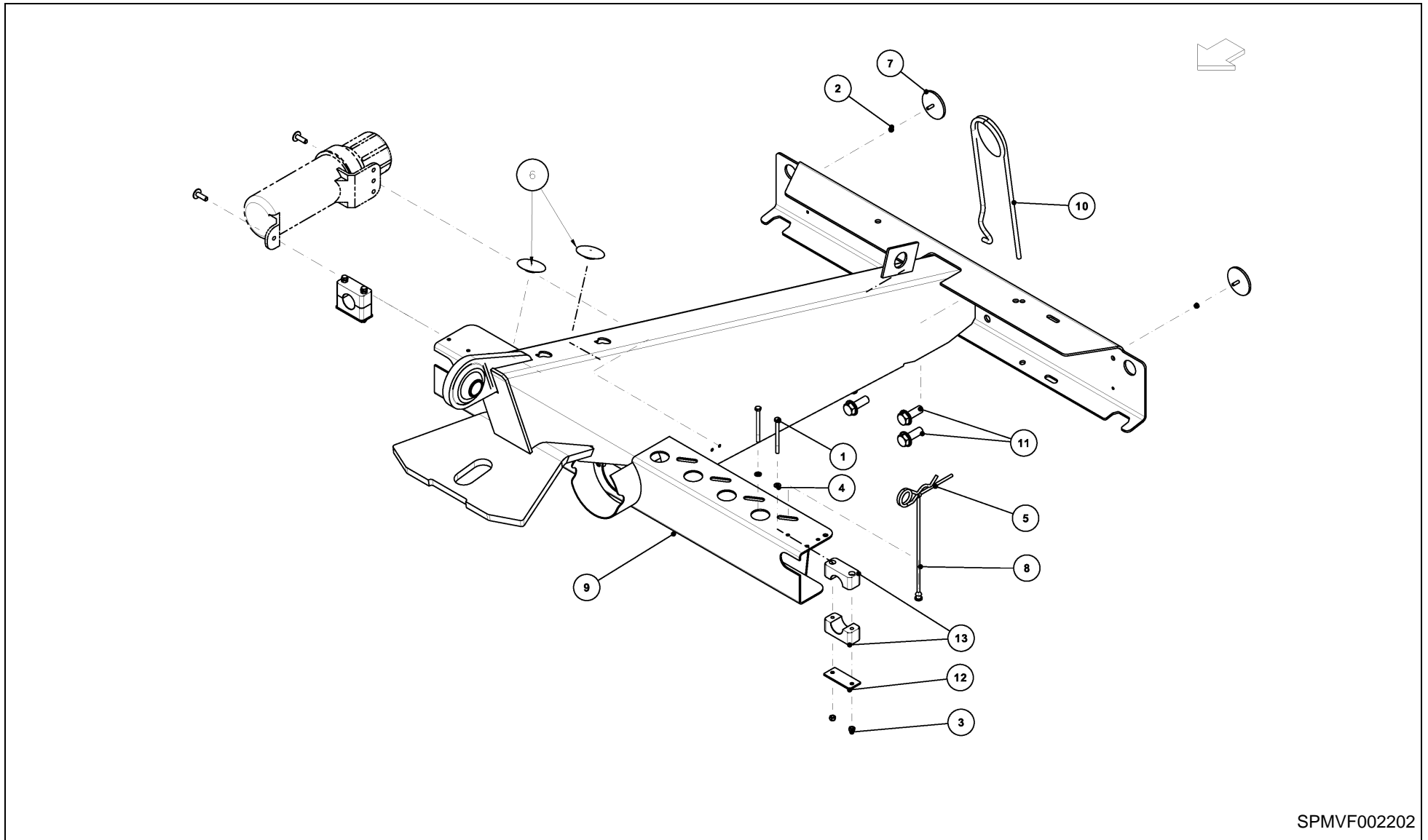


SPMVF003139

9032 / 3 POINT LINKAGE



PosNo.	Part No.	Qty.	Description	Remark
1	A100011961	1	SHIM RING 30X42X2,5	
2	KG01191962	2	TENSION PIN 8X45	
3	KG01192462	1	TENSION PIN 8X100	
4	KG01253761	4	SPLIT PIN 6.3X40 ST	
5	VF01141355	1	SPRING CLIP 5 GALV.	
6	VF06214228	4	WASHER 21X32X1 GALV.	
7	VF06214232	2	WASHER 29X42X5DIN1441 GALV.	
8	VF06214241	1	WASHER 41,0X58,0X4,0	
9	VF06215672	1	SPRING CLIP 5 DIN11024	
10	A144196800	1	CORD BLACK	
11	VF06564945	2	BOLT	
12	VF06565619.86	2	FORKED PIECE WELD.	
13	VF16605465	1	PARKING STAND WELD.	
14	VF16605467	1	BOLT 28X118X100	
15	VF16609260	1	PIN KAT 1+2	
16	VF16644196.61	1	BOLT	
17	VF16649727.94	1	3-POINT LINKAGE WELD.	

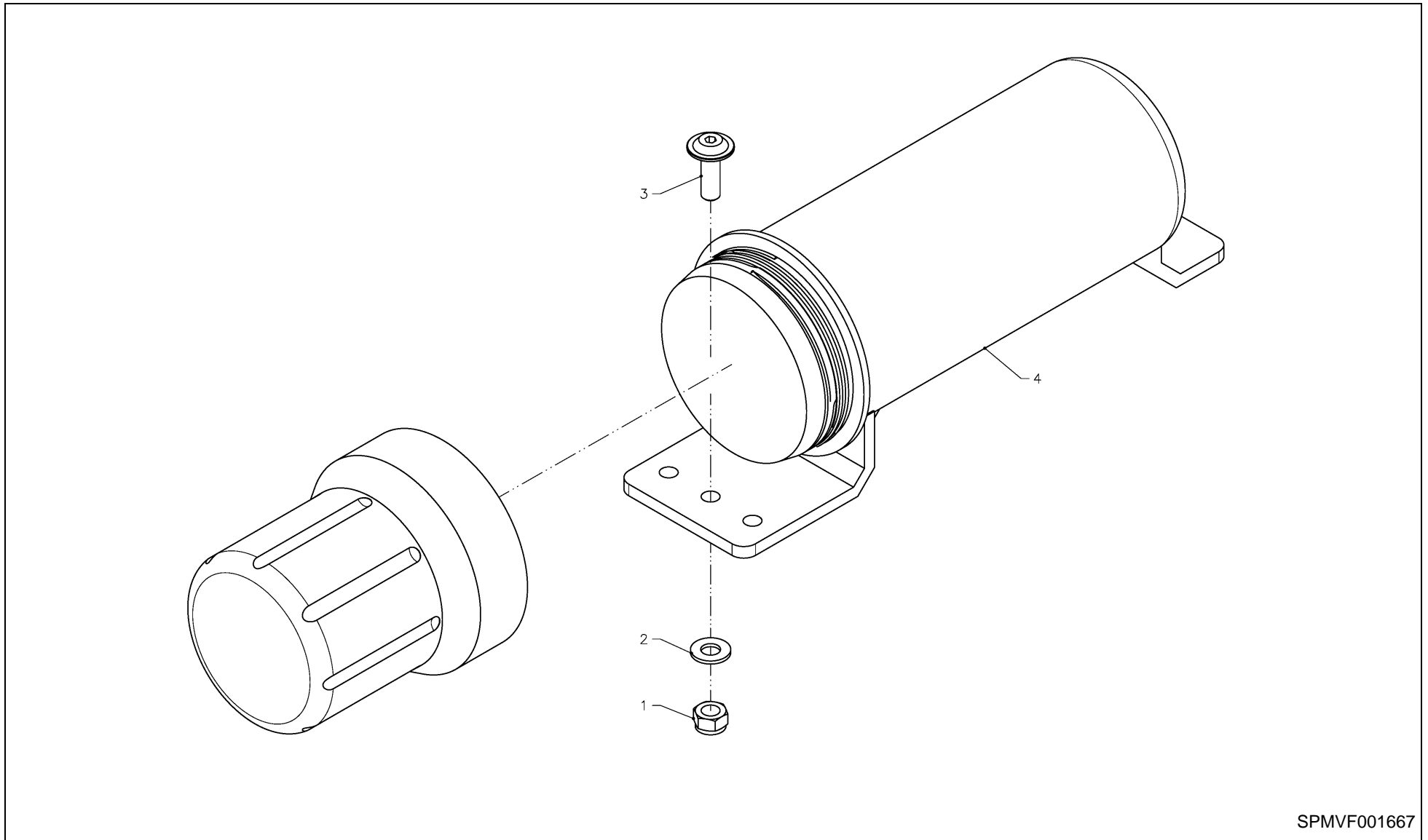


SPMVF002202

9032 / FRAME



PosNo.	Part No.	Qty.	Description	Remark
1	KG00351761	4	HEX. BOLT M6X75 8.8 GALV. DIN933	
2	KG01067261	2	LOCK NUT M5	
3	KG01067361	4	LOCK NUT M6 8	
4	KG01267261	4	WASHER M6	
5	VF01141355	1	SPRING CLIP 5 GALV.	
6	VF01142820	2	PLUG	
7	VF06214033	2	REAR REFLECTOR R61 RED DIN 72616 M5	
8	A144196800	1	CORD BLACK	
9	VF16605338.94	1	SUPPORT ARM WELD.	
10	VF16605359	1	ROTARY SECURITY	
11	VF16608183	4	RIPP SCR. M14X40 100 GALV.	
12	VF16608688	2	COVER PLATE DP5	
13	VF16608689	4	CLAMPING PIECE HALF 532 PAH	



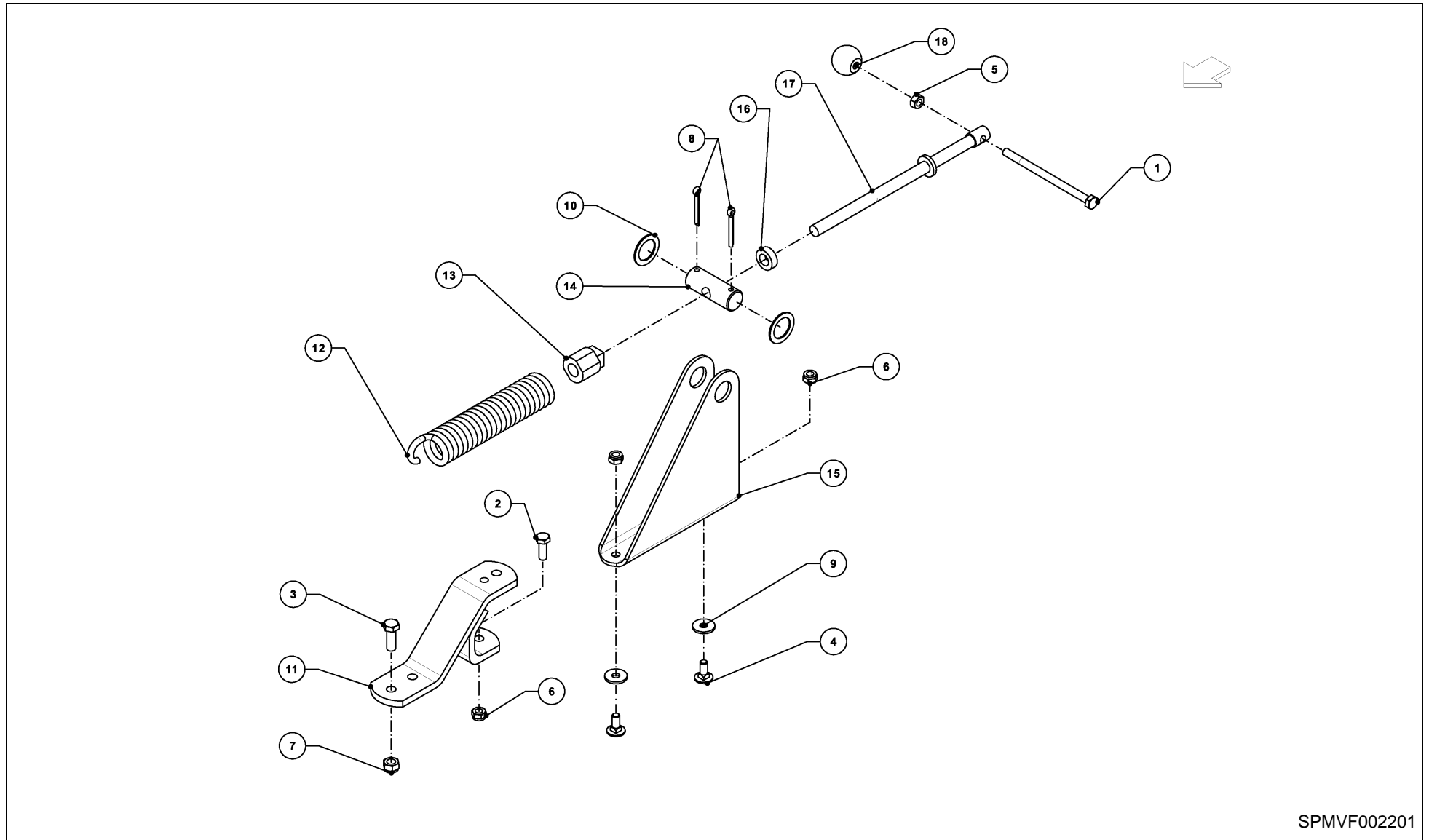
SPMVF001667

9032 / DOCUMENT BOX



PosNo.	Part No.	Qty.	Description	Remark
1	KG01067561	2	LOCK NUT M8 8	
2	KG01267361	2	WASHER M8	
3	VF01142856	2	CUP SQR. BOLT M8X25DIN7380-2 10.9 GALV.	
4	VF16660164	1	DOCUMENT BOX D=89 MM	

9032 / LOCKING DEVICE FOR WORK AT SLOPES (OPTION)

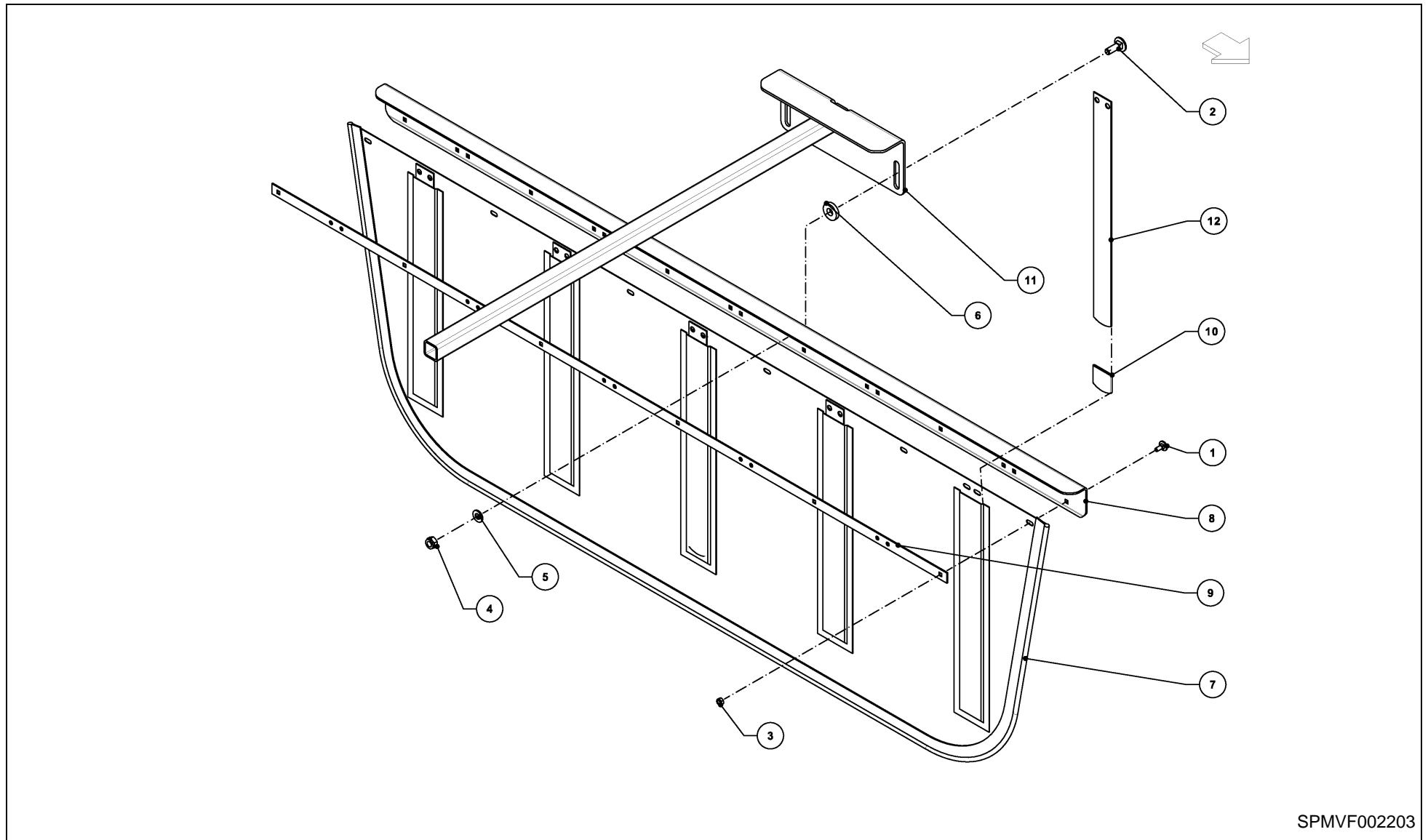


SPMVF002201

9032 / LOCKING DEVICE FOR WORK AT SLOPES (OPTION)



PosNo.	Part No.	Qty.	Description	Remark
1	KG00356961	1	HEX. BOLT M10X160 8.8	
2	KG00474361	1	HEX. SCREW M10X30 8.8	
3	KG00476661	1	HEX. SCREW M12X35 8.8	
4	KG00641461	2	CARRIAGE BOLT M10X25 8.8	
5	KG01052061	1	HEX. NUT M10 8	
6	KG01067661	3	LOCK NUT M10 8	
7	KG01067761	1	LOCK NUT M12 8	
8	KG01253861	2	SPLIT PIN 6.3X45 ST	
9	KG01260361	2	WASHER M10X30 ST	
10	VF06214234	2	WASHER 31X45X2 GALV.	
11	VF16600228.61	1	BRACKET WELDED FE/ZN GALV.	
12	VF16605009	1	DRAW SPRING	
13	VF16605038	1	SPINDLE NUT	
14	VF16605527	1	GUIDE BOLT	
15	VF16605528.61	1	BRACKET FE/ZN GALV.	
16	VF16605531	1	SPACER RING	
17	VF16605535	1	CRANK/HANDLE	
18	VF16607629	1	BALL HANDLE DIN 319-KU-40-M10-E	

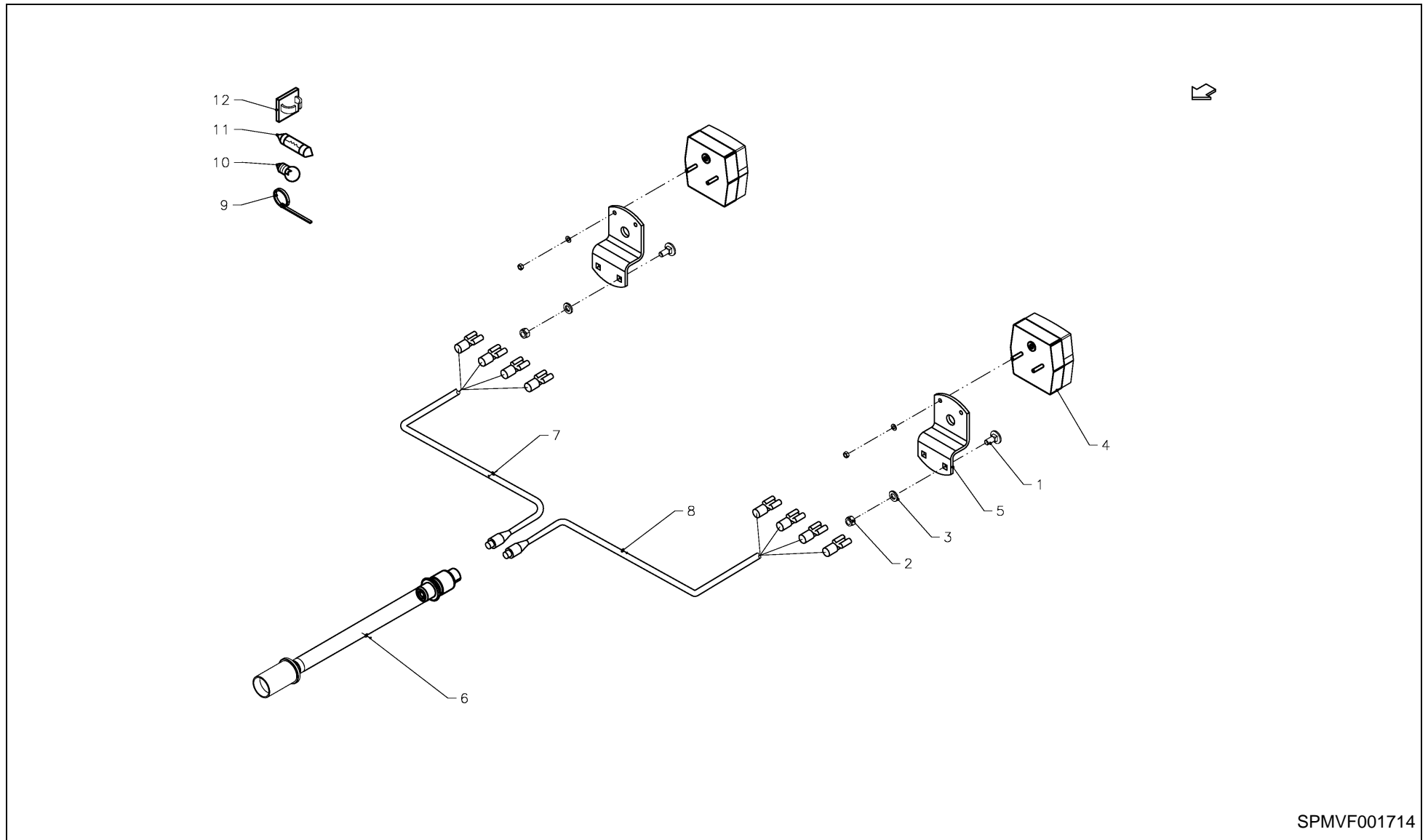


SPMVF002203

9032 / SWATH FORMER



PosNo.	Part No.	Qty.	Description	Remark
1	KG00637061	16	CARRIAGE BOLT M6X16 8.8	
2	KG00641561	2	CARRIAGE BOLT M10X30 8.8	
3	KG01067361	16	LOCK NUT M6 8	
4	KG01067661	2	LOCK NUT M10 8	
5	KG01267461	4	WASHER M10	
6	KG01273761	2	WASHER DIN7349 M12 A3C	
7	VF16609883	1	SWATH CLOTH	
8	VF06560350.94	1	STRIP SHORT L=1600	
9	VF06560411.61	1	FASTENING RAIL L=1542 ZINC-COATED	
10	VF06565179	1	PROTECTIVE CAP 40X1.5	
11	VF16606479.94	1	SUPPORT FOR SWATH FORMER WELD. L=945	
12	VF16609031	1	ROD L= 450 BD.40X1.5	

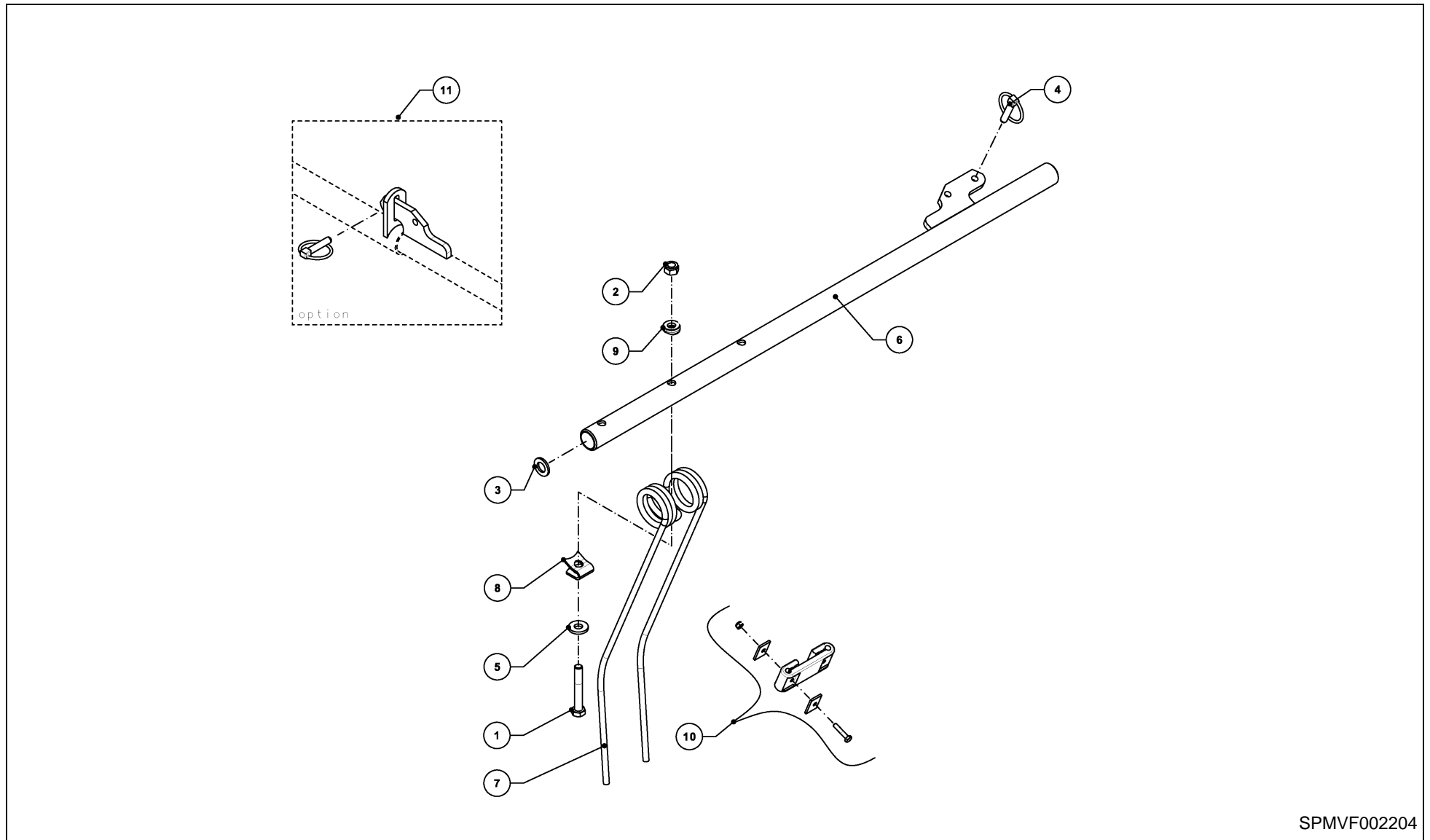


SPMVF001714

9032 / LIGHTING EU/OTHERS (OPTION EU/OTHERS)



PosNo.	Part No.	Qty.	Description	Remark
1	KG00639061	4	CARRIAGE BOLT M8X20 8.8	
2	KG01067561	4	LOCK NUT M8 8	
3	VF06214195	4	WASHER 9X17X2,5 GALV.	
4	VF16600345	2	TAIL LIGHT CPL.	
5	VF16605913.61	2	HOLDER	
6	VF16644644	2	LEADING LINE 6-POL.5000 LG	
7	VF16644643	1	CABLE LEFT	
8	VF16644642	1	CABLE RIGHT	
9	VF06216479	1	CABLE TIE 150X3,6 SW SNX 2-35	
10	KT99477138	1	LIGHTING BULB 12V 21W	
11	VF01121409	1	BULP 12V 10W DIN72601	
12	VF16613283	1	CABLE RETAINER	
-	VF06214037	2	REFLEX, CIRCULAR YELLOW, ADHESIVE D60	

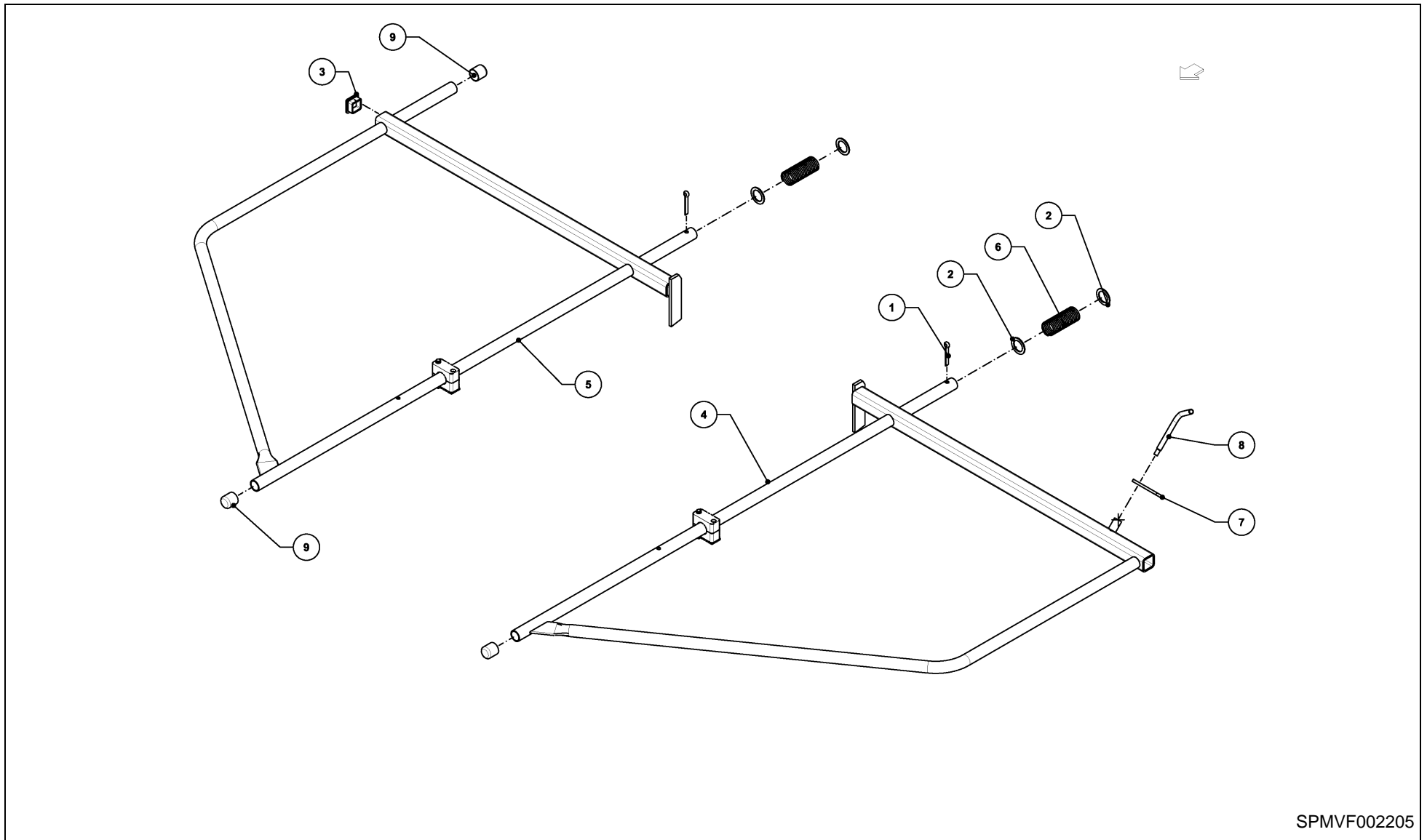


SPMVF002204

9032 / TINE SUPPORT



PosNo.	Part No.	Qty.	Description	Remark
1	KG00358161	27	HEX. BOLT M12X80 8.8	
2	KG01067761	27	LOCK NUT M12 8	
3	VF16645226	9	PLUG GL35X3-5 D=25	
4	VF01397617	9	LYNCH PIN 10X45 DIN11023 GALV.	
5	VF06214206	27	WASHER 13X30X4 RM=580-680 MPA A2C	
6	VF16605588.94	9	TINE ARM WELD. CCW ROTATING	
7	VF16606394.88	27	SPRING TINE, 9 MM, RAKE	
8	VF16606396	27	CLAMP 9MM FOR COMPACTLINE RAKE	
9	VF16606401	27	SHIM	
10	VF06564420	27	TINE SAFETY DEVICE	OPTION
11	VF16624118	1	REPAIR KIT, WELD ON TINE ARM	OPTION repair kit

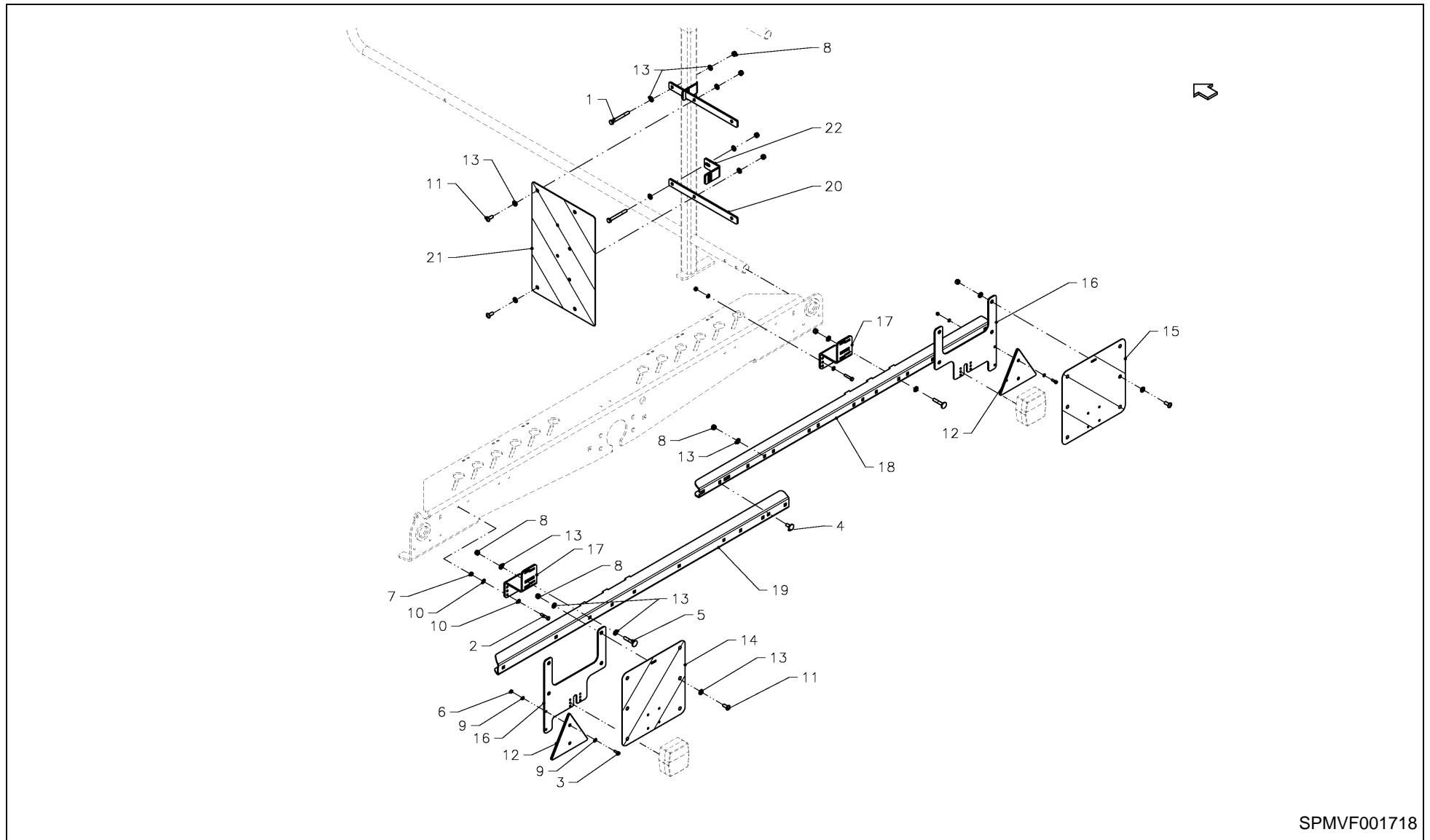


SPMVF002205

9032 / GUARD



PosNo.	Part No.	Qty.	Description	Remark
1	KG01255061	2	SPLIT PIN 8X50 ST	
2	VF06214234	4	WASHER 31X45X2 GALV.	
3	VF16605185	1	SQUARE PLUG GPN260 Q40404	
4	VF16605346.94	1	PROTECTIVE FRAME LEFT	
5	VF16605347.94	1	PROTECTIVE YOKE RIGT	
6	VF16605379.61	2	COMPR. SPRING 3+35+279 GALV. YELLOW CHR.	
7	VF16606477.61	1	THREADED BRACKET	
8	VF16606478.61	1	CAPSTAN-HEAD SCREW	
9	VF16609767	3	END CAP FOR PIPE 30 GPN 280 ER 30	

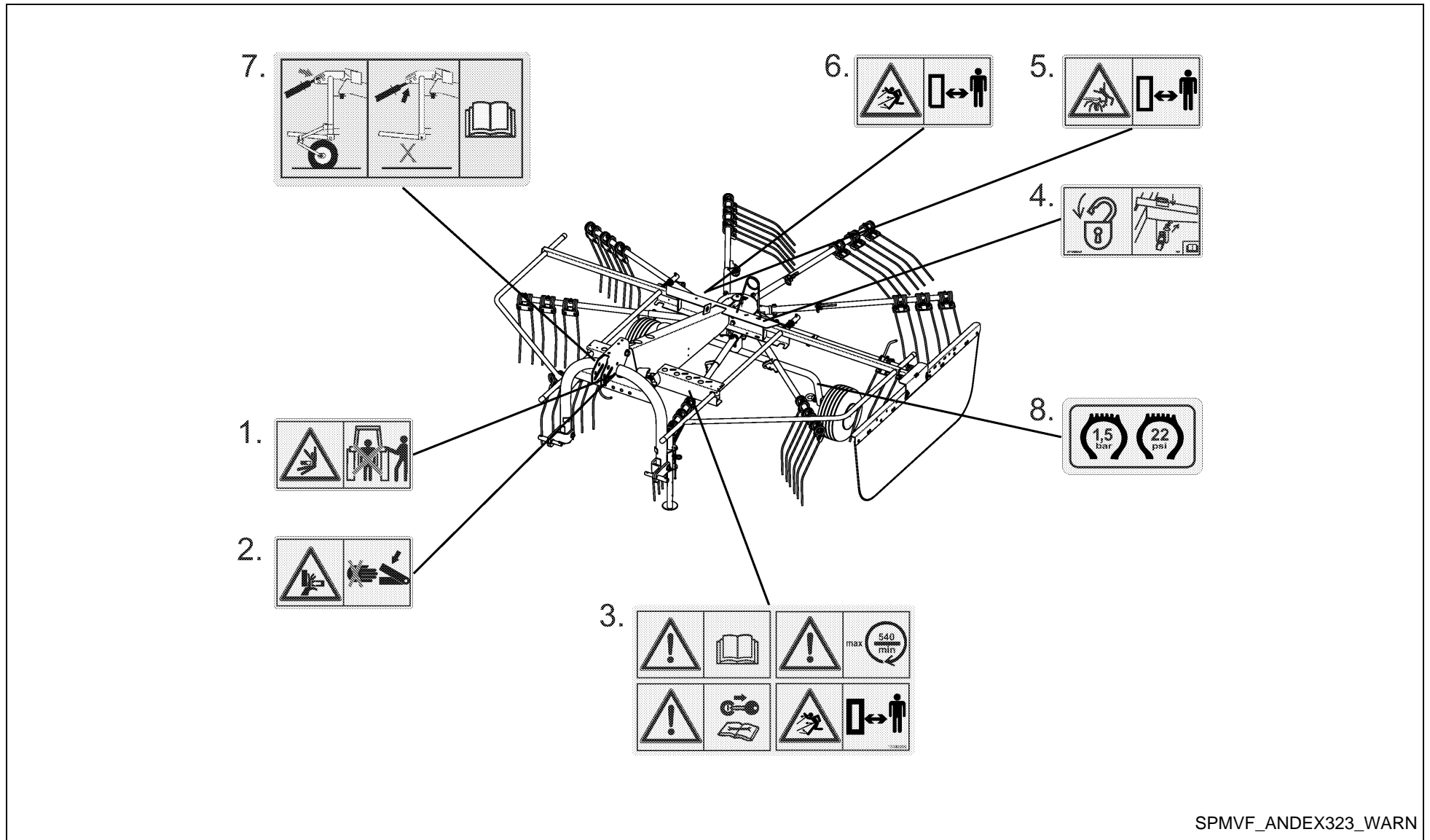


SPMVF001718

9032 / WARNING PANEL (OPTION EU/OTHERS)



PosNo.	Part No.	Qty.	Description	Remark
1	KG00353961	2	HEX. BOLT M8X75 8.8	
2	KG00469261	4	HEX. SCREW M6X30 8.8	
3	KG00542161	2	CHEESE HEAD SCREW M5X16 8.8	
4	KG00639061	4	CARRIAGE BOLT M8X20 8.8	
5	KG00639561	2	CARRIAGE BOLT M8X45 8.8	
6	KG01067261	2	LOCK NUT M5	
7	KG01067361	4	LOCK NUT M6 8	
8	KG01067561	20	LOCK NUT M8 8	
9	KG01267161	4	WASHER M5	
10	KG01267261	8	WASHER M6	
11	VF01142565	12	TRUSS-HEAD SCR. M8X20 109 GALV.	
12	VF06214042	2	TRIANGLE REAR-REFLECTOR WGF 4.3870	
13	VF06214195	20	WASHER 9X17X2,5 GALV.	
14	VF16645752	1	WARNING PLATE 282X282 (LH)	
15	VF16645753	1	WARNING PLATE 282X282 (RH)	
16	VF16645754.61	2	SUPPORT FOR WARNING PLATE	
17	VF16645755.61	2	SUPPORT	
18	VF16645778.61	1	PROFILE (TELESCOPIC)	
19	VF16645779.61	1	PROFILE (TELESCOPIC)	
20	VF16645782.61	2	PLATE	
21	VF16645784	1	WARNING PLATE 423X282 DOUBLE SIDE COATED	
22	VF16645854.61	2	CLAMP	

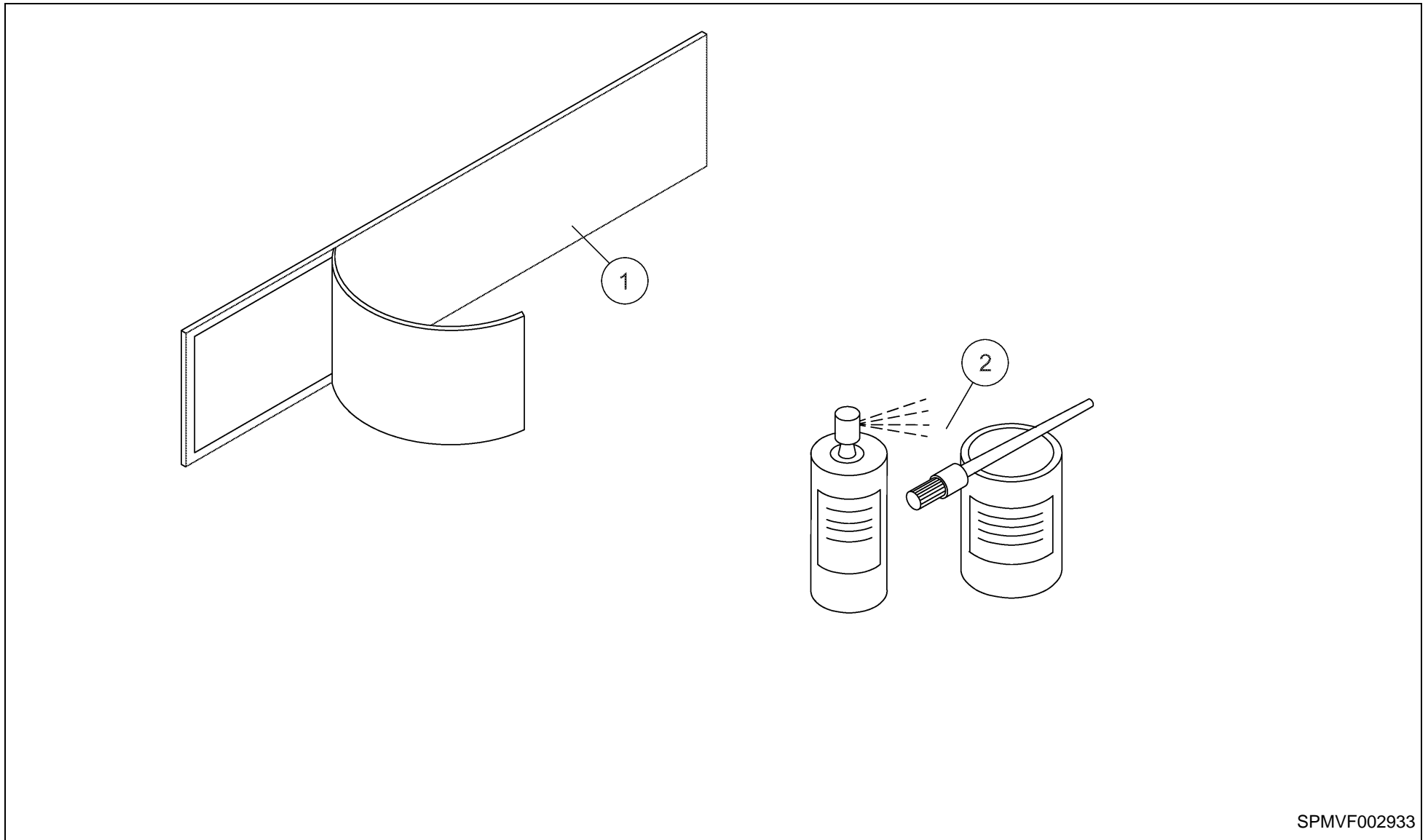


SPMVF_ANDEX323_WARN

9032 / WARNING DECAL EU/OTHERS (EU/OTHERS VERSION)



PosNo.	Part No.	Qty.	Description	Remark
1	VF16601351	1	WARNING DECAL DISTANCE FROM TRACTOR	
2	VF16613719	1	WARNING DECAL RISK OF CRUSHING	
3	VF16648006	1	WARNING DECAL-COMBINATION 4 FOLD	
4	VF16660345	1	WARNING DECAL LOCK POSITION	
5	VF16646945	1	WARNING DECAL DISTANCE ROTOR	
6	VF16644221	1	WARNING DECAL CAUTION FLYING OBJECTS	
7	VF16607040	1	ADVISE STICKER GUIDING WHEEL	
8	VF01141352	2	DECAL 1,5 BAR	



SPMVF002933

9032 / DECAL + PAINT



PosNo.	Part No.	Qty.	Description	Remark
1	A145700732	1	DECAL SET KV 9032	
2	KK010898	1	SPRAY 400 ML GREEN RAL 6016	
2	KK010897	1	SPRAY 400 ML FLAME RED RAL 3000	
2	VF16609648.88	1	PAINT KVLD. GREEN	
2	KK010888	1	CAN 1 LITER FLAME RED RAL 3000	

9032 / Part No Index



Part No.	Page	Pos No	Part No.	Page	Pos No	Part No.	Page	Pos No	Part No.	Page	Pos No
A100011961	9	1	KG00742063	2	52	KG01192362	4	3	VF01120693	5	2
A131109530	7	1	KG01047361	7	9	KG01192462	9	3	VF01120694	3	14
A131114561	7	2	KG01051961	7	10	KG01194062	7	16	VF01121409	14	11
A131117986	7	3	KG01052061	12	5	KG01197162	4	4	VF01132688	3	8
A131440261	7	4	KG01067261	10	2	KG01253761	9	4	VF01133287	3	12
A131653030	8	4	KG01067261	17	6	KG01253861	12	8	VF01137526	3	16
A144196800	9	10	KG01067361	10	3	KG01255061	16	1	VF01137725	3	16.1
A144196800	10	8	KG01067361	13	3	KG01260361	12	9	VF01137726	3	16.2
A145700732	19	1	KG01067361	17	7	KG01267161	17	9	VF01137727	3	16.3
KG00043700	3	35	KG01067561	7	11	KG01267261	10	4	VF01139148	3	9
KG00132500	3	18	KG01067561	11	1	KG01267261	17	10	VF01141352	18	8
KG00161100	3	28	KG01067561	14	2	KG01267361	11	2	VF01141355	9	5
KG00351761	10	1	KG01067561	17	8	KG01267461	7	17	VF01141355	10	5
KG00353961	17	1	KG01067661	7	12	KG01267461	13	5	VF01141364	6	3
KG00355961	7	5	KG01067661	12	6	KG01267561	7	18	VF01141365	6	10
KG00356961	12	1	KG01067661	13	4	KG01267761	7	19	VF01142565	17	11
KG00358161	15	1	KG01067761	5	1	KG01273661	7	20	VF01142820	10	6
KG00362661	4	1	KG01067761	6	1	KG01273761	13	6	VF01142856	11	3
KG00469261	17	2	KG01067761	7	13	KG01379500	8	2	VF01157382	1	12
KG00472361	7	6	KG01067761	8	1	KG01381900	3	17	VF01168225	7	21
KG00474261	3	23	KG01067761	12	7	KG01384600	3	29	VF01173914	3	23
KG00474361	12	2	KG01067761	15	2	KG01476400	6	2	VF01397617	15	4
KG00476661	12	3	KG01067961	7	14	KG02000600	1	10	VF01397656	3	15
KG00542161	17	3	KG01068961	3	39	KG02000800	2	25	VF01397656	3	15
KG00546761	3	3	KG01094261	4	2	KG02001500	2	56	VF06210723	4	5
KG00637061	13	1	KG01099300	1	4	KG02002700	1	11	VF06212528	3	30
KG00639061	14	1	KG01100100	3	11	KG02008000	2	12	VF06214033	10	7
KG00639061	17	4	KG01109362	3	20	KK010888	19	2	VF06214037	14	-
KG00639161	7	7	KG01130500	3	21	KK010897	19	2	VF06214042	17	12
KG00639561	17	5	KG01132300	3	6	KK010898	19	2	VF06214195	14	3
KG00641461	12	4	KG01188162	7	15	KT99350525	1	5	VF06214195	17	13
KG00641561	13	2	KG01191962	9	2	KT99477138	14	10	VF06214206	6	4
KG00641661	7	8	KG01192062	2	24	VF01111524	3	36	VF06214206	8	3

9032 / Part No Index



Part No.	Page	Pos No	Part No.	Page	Pos No	Part No.	Page	Pos No	Part No.	Page	Pos No
VF06214206	15	5	VF06580546	6	9	VF16606396	15	8	VF16609883	13	7
VF06214210	5	3	VF06582596	2	11	VF16606401	15	9	VF16613283	14	12
VF06214228	9	6	VF06586718	2	54	VF16606477.61	16	7	VF16613719	18	2
VF06214232	9	7	VF06586719	2	53	VF16606478.61	16	8	VF16621254	7	28
VF06214234	12	10	VF16504064	1	9	VF16606479.94	13	11	VF16621257.61	7	29
VF06214234	16	2	VF16600228.61	12	11	VF16606486.86	5	4	VF16621258.61	7	30
VF06214241	9	8	VF16600345	14	4	VF16606690	3	7	VF16622598	4	9
VF06214246	7	22	VF16601351	18	1	VF16606691	3	2	VF16622598	5	5
VF06214287	7	23	VF16602632	3	26	VF16606692	3	13	VF16622598	8	9
VF06214329	3	41	VF16604026	1	1	VF16606693	3	19	VF16622900.94	3	24
VF06214504	3	8	VF16605009	12	12	VF16606699	2	13	VF16622966	3	5
VF06214535	3	25	VF16605038	12	13	VF16606720	1	13	VF16622984	3	34
VF06214536	3	25	VF16605185	16	3	VF16607040	18	7	VF16622985	3	27
VF06215672	9	9	VF16605323.86	4	6	VF16607629	12	18	VF16623149	5	6
VF06215767	1	3	VF16605338.94	10	9	VF16608048	7	24	VF16624055.86	3	38
VF06216479	14	9	VF16605346.94	16	4	VF16608058	7	25	VF16624056.94	3	1
VF06249879	6	5	VF16605347.94	16	5	VF16608183	3	42	VF16624100	1	6
VF06249879	8	5	VF16605357.86	4	7	VF16608183	10	11	VF16624118	15	11
VF06560350.94	13	8	VF16605359	10	10	VF16608185	4	8	VF16625102	2	15
VF06560411.61	13	9	VF16605379.61	16	6	VF16608362	7	26	VF16625107	2	14
VF06564096	8	10	VF16605465	9	13	VF16608470	3	10	VF16640417	3	37
VF06564420	15	10	VF16605467	9	14	VF16608475.94	3	4	VF16644196.61	9	16
VF06564451.98	8	6	VF16605527	12	14	VF16608477	3	31	VF16644221	18	6
VF06564733	6	6	VF16605528.61	12	15	VF16608478	3	32	VF16644642	14	8
VF06564735	6	7	VF16605531	12	16	VF16608479	3	22	VF16644643	14	7
VF06564945	9	11	VF16605535	12	17	VF16608480	3	33	VF16644644	14	6
VF06565179	13	10	VF16605557.97	2	1	VF16608688	10	12	VF16645226	15	3
VF06565619.86	9	12	VF16605588.94	15	6	VF16608689	10	13	VF16645752	17	14
VF06567492	6	8	VF16605848.61	1	2	VF16609031	13	12	VF16645753	17	15
VF06567492	8	7	VF16605913.61	14	5	VF16609210	7	27	VF16645754.61	17	16
VF06567493	8	8	VF16606185	1	8	VF16609260	9	15	VF16645755.61	17	17
VF06580486	2	23	VF16606236	1	7	VF16609648.88	19	2	VF16645778.61	17	18
VF06580488	2	27	VF16606394.88	15	7	VF16609767	16	9	VF16645779.61	17	19

9032 / Part No Index



Part No.	Page	Pos No			
VF16645782.61	17	20			
VF16645784	17	21			
VF16645854.61	17	22			
VF16646648.61	7	31			
VF16646945	18	5			
VF16648006	18	3			
VF16648473.86	7	32			
VF16648511.86	7	33			
VF16648522.61	7	34			
VF16648554.86	7	35			
VF16648785.61	7	36			
VF16648787.61	7	37			
VF16648789.61	7	38			
VF16648795.61	7	39			
VF16649262.86	7	40			
VF16649727.94	9	17			
VF16660164	11	4			
VF16660345	18	4			
VG63.27.00	2	22			
WA085702	2	26			
WA116401	2	21			
WA116967	2	4			
WA116968	2	5			
WA153821	2	51			
WA156032	2	55			



9032

VF65892901 < Mach. ID <=

Kverneland Group Kerteminde AS
Taarupstrandvej 25
DK-5300 Kerteminde
Denmark
+45 65 191900
+45 65 191998

© Kverneland Group

All rights reserved. No parts of this book may be reproduced, stored in a database or retrieval system, or published in any form or in any way, electronically, mechanically, optically, by print, photo print, microfilm (including micro and macro fiche), or any other means, including all video and CD systems, without prior written permission from the publisher.

Print date: 2018-10-12

