

Service manual Qualidisc range



Date

May 2019

Subject

Service training Qualidisc

Details

Qualidisc Pro, Qualidisc Farmer

Table of contents

1. Qualidisc Pro range	3	6. Common adjustments	22	10. Hydraulic diagrams	51 - 59
1.1 Qualidisc Pro rigid	3	6.1 Stability	22	11. Positioning plan of rows of discs : Qualidisc Pro	60-64
1.2 Qualidisc Pro fold	4	6.2 Lateral deflectors	23 - 24		
1.3 Qualidisc Pro trailed	5	6.3 Hydraulic depth	25		
2. Qualidisc Farmer range	6	6.4 Mechanical depth	26		
2.1 Qualidisc Farmer rigid	6	6.5 Lateral adjustment	27		
2.2 Qualidisc Farmer fold	7	6.6 Finger harrow	28		
2.3 Qualidisc Farmer trailed	8	7. Adjustments on rollers	29		
3. Generality	9	7.1 Actipack/Actiring knives	29		
3.1 Disc	9	7.2 Actiflex	30		
3.2 Disc big notches	10	7.3 Actipress twin	31		
3.3 Arm	11	7.4 U-bolts on rollers	32		
3.4 Bearing Qualidisc	12	8. Adjustments on trailed	33		
3.5 Bearing Qualidisc Farmer	13	8.1 Before transport	33		
3.6 Rubber	14	8.2 Before work	34-37		
4. Accessories	15	8.3 Depth with front wheels	38		
4.1 Finger harrow	15	8.4 Depth without front wheels	39		
4.2 Lateral deflectors	16	8.5 Front equipment	40		
4.3 Rollers	17	8.6 Folding cylinders Qualidisc Pro T	41		
5. Accessories (trailed)	18	8.7 Folding cylinders Qualidisc Farmer T	42		
5.1 Linkage	18	9. Maintenance and lubrication	43		
5.2 Wagon and transport wheels	19	9.1 Greasing	43		
5.3 Front wheels	20	9.2 Wearing parts on accessories	44		
5.4 Front equipment	21	9.3 Wearing parts on row of disc	45		
		9.4 Wearing parts on rollers	46		
		9.5 Wearing bush	47-49		
		9.6 Depth cylinders	50		

1.1 Qualidisc Pro rigid



Model type	2500	3000	3500	4000
Frame type	Mounted rigid			
Working width (m)	2,50	3,00	3,50	4,00
Transport width (m)	2,50	3,00	3,50	4,00
Disc diameter (mm)	600x6			
Number of discs	20	24	28	32
Disc spacing (mm)	245			
Inter-row distance(mm)	900			
Working depth (cm)	2 to15			
Weight with Actipack roller (kg)	1.980	2.250	2.500	2.850
HP requirement (average)	70	90	110	130
Maximum HP (HP)	180	200	220	240

- Robust frame design from the cultivator range (CLC Evo)
- Strong headstock from the CLC pro range
- The roller arms are linked to the front of the frame for better dilution of the stress
- 100x100x8 mm tube section

1.2 Qualidisc Pro fold



Model type	4000F	5000F	6000F
Frame type	Mounted foldable		
Working width (m)	4,00	5,00	6,00
Transport width (m)	2,55		
Disc diameter (mm)	600x6		
Number of disc	32	40	48
Disc spacing (mm)	250		
Inter row distance (mm)	900		
Working depth (cm)	2 to 15		
Weight with Actipack roller (kg)	3.400	4.000	4.650
HP requirement (average)	150	170	190
Maximum HP	250	300	350

- Robust frame design from the cultivator range (CLC Evo)
- Strong headstock from the CLC pro range
- The roller arms are linked to the front of the frame for better dilution of the stress
- 200x200x10mm for the central frame
- 100x100x8mm for the extension

For folding:

- 2 hydraulic cylinders 35x100 on the 4000F and 5000F
- 4 hydraulic cylinders 35x80 on the 6000F

1.3 Qualidisc Pro trailed



Model type	4000T	5000T	6000T	7000T
Frame type	Trailed foldable			
Working width (m)	4,00	5,00	6,00	7,00
Transport width (m)	2,75			
Disc diameter (mm)	600x6			
Number of disc	32	40	48	56
Disc spacing (mm)	250			
Inter row distance (mm)	900			
Working depth (cm)	2 to 15			
Weight with Actipack (kg)	4.700	5.200	5.950	6.520
HP requirement (average)	180	200	220	240
Maximum HP	250	300	350	400
Homologation (DREAL / TÜV)	Yes			

- Robust frame designed with FEM calculation
 - 300x200x10mm for the central frame
 - 100x100x8mm for the extension
- The roller arms are linked to the front of the frame for better dilution of the stress

For folding:

- 4 hydraulic cylinders 35x80 on the 4000T, 5000T and 6000T
- 4 hydraulic cylinders 35x100 on the 7000T

2.1 Qualidisc Farmer rigid



- Optimized frame design by FEM calculation
- Strong headstock with bolted concept
- Short roller arms
- The frame have a 100x100x8 mm box section

Model frame	2000	2500	3000	3500	4000
Frame type	Mounted rigid			Mounted rigid with bolted extension	
Working width (m)	2,00	2,50	3,00	3.50	4.00
Transport width (m)	2,00	2,50	3,00	3.50	4.00
Disc diameter (mm)	520x5				
Number of disc	16	20	24	28	32
Disc spacing (mm)	245				
Inter row distance (mm)	900				
Workind depth (cm)	2 to 10				
Weight with Actipack (kg)	1.450	1.680	1.920	2.240	2.580
HP requirement (average)	50	70	90	110	130
Maximum HP	100	120	150	180	200

2.2 Qualidisc Farmer fold



Model frame	4000F	5000F	6000F
Frame type	Mounted foldable		
Working width (m)	4,00	5,00	6,00
Transport width (m)	2,45		
Disc diameter (mm)	520x5		
Number of disc	32	40	48
Disc spacing (mm)	250		
Inter row distance (mm)	900		
Working depth (cm)	2 to 8		
Weight with Actipack (kg)	3.010	3.560	4.150
Hp requirement (average)	1110	130	150
Maximum HP	200	250	300

- Optimized frame design by FEM calculation
- Strong headstock with bolted concept
- Short roller arms
- The frame is 100x100x8 mm for the extension and 200x200x10 mm for the central frame

For folding:

- 2 hydraulic cylinders on the 4m version and 5m version
- 4 hydraulic cylinders 40x90mm on the 6m version

2. Qualidisc Farmer range

2.3 Qualidisc Farmer Trailed



Model type	4000T	5000T	6000T
Frame type	Trailed foldable		
Working width (m)	4,00	5,00	6,00
Transport width (m)	2,55		
Disc diameter (mm)	520x5		
Number of disc	32	40	48
Disc spacing (mm)	250		
Inter row distance (mm)	900		
Working depth (cm)	2 to10		
Weight with Actipack (kg)	4.500	5.050	5.600
HP requirement (average)	130	150	170
Maximum HP	220	260	300
Homologation (DREAL / TÜV)	Yes		

- Robust frame designed with FEM calculation
 - 300x200x10mm for the central frame
 - 100x100x8mm for the extension
- Short roller arms

For folding:

- 4 hydraulic cylinders 40x90

3.1 Disc



- Conical disc to keep a constant cutting angle whatever the depth and the disc diameter are.
- Small notched on the disc to ensure good penetration, good cutting effect



- Qualidisc is equipped with a 600 mm disc diameter and 6 mm thickness.
- Qualidisc Farmer is equipped with a 520 mm disc diameter and 5 mm thickness.
- Heat treated discs : very high hardness (55-58 HRC). The same hardness as Kverneland ploughs

3.2 Disc big notches



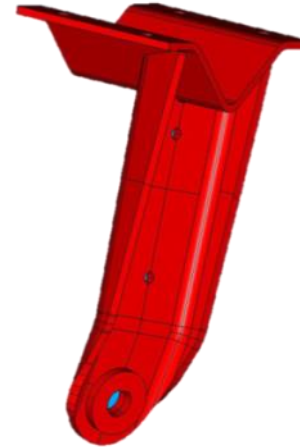
- The machine can receive discs with big notches at the rear disc gang or the completely machine for a better driving effect
- These discs are recommended in fluffy soil, sandy soils (or for seedbed operations), sticky soils (more than 20% of clay) with residues, wet conditions
- The cutting quality is not affected as we still keep small notches in between for nice bottom profile
- Even when the disc diameter is smaller due to wearing, the big notches still drive the discs to avoid any blockages

3.3 Arm



Qualidisc

- The arm allows supporting lateral and frontal stress
- The cutting angle stays the same thanks to notches on top and bottom part of the arm
- The arm of the Qualidisc is made of a particular tubular conception

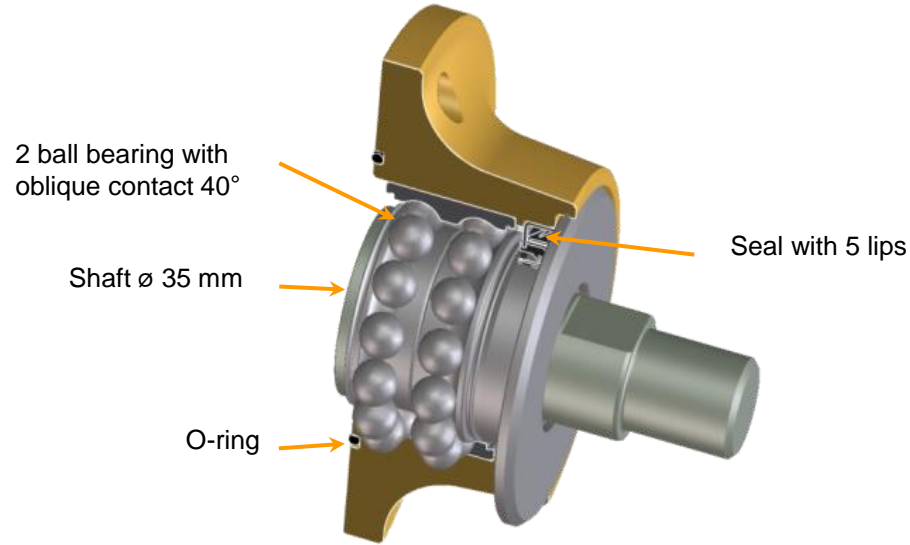


Qualidisc Farmer

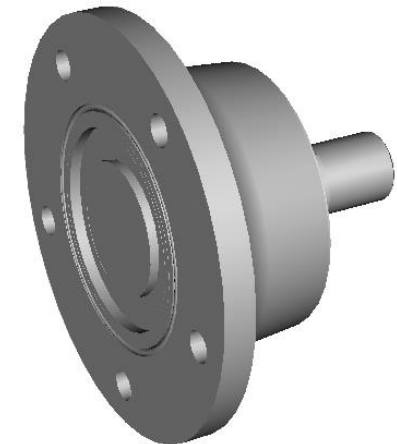
- The arm allows supporting lateral and frontal stress
- The cutting angle stays the same due to close spacing between clamp and tube
- The arm of the Qualidisc farmer is made of a “U” shape, 8 mm thickness

Working angle is the same on Qualidisc and Qualidisc Farmer

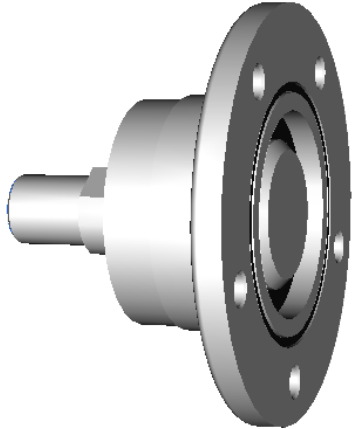
3.4 Bearing Qualidisc



- The access to the hub is simple and easy. Only one nut to remove.
- 35 mm diameter shaft and two rows of oblique contact balls.
- Oblique contact balls bearing (40°) for high radial and axial load capacity
- Bearings are press fitted inside hub. They cannot be replaced separately
- Torque on shaft if **400N.m**



3.5 Bearing Qualidisc farmer



- The access to the hub is simple and easy. Only one nut to remove.
- Seal with 6 lips
- 35 mm diameter shaft and two rows of oblique contact balls.
- Oblique contact balls bearing (40°) for high radial and axial load capacity
- Bearings are press fitted inside hub. They cannot be replace separately
- Torque on shaft if **400N.m**

3.6 Rubber

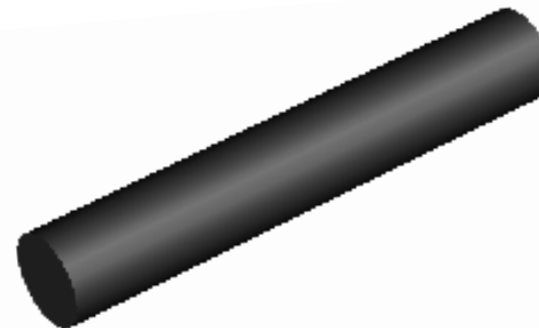
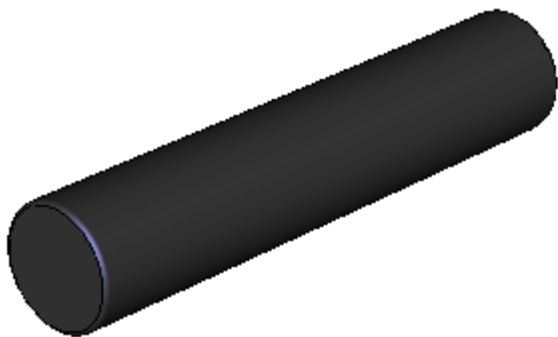


Qualidisc rubbers

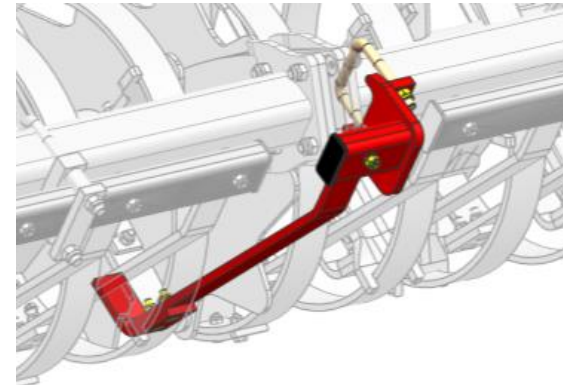
Qualidisc farmer rubbers

- Diameter 44 mm
- Length 220 mm

- Diameter 34 mm
- Length 220mm



4.1 Finger harrow



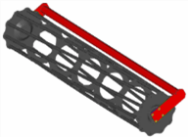




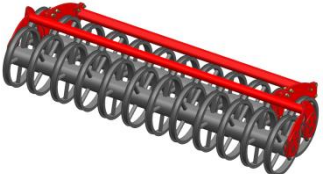
- The finger harrow regulates the soil flow in a way that the fine soil stays on top layer for better re-growth of weeds
 - 4 different positions are available depending of the residues and the soil flow
 - Fingers are bent at the base, so they allow the progressive flow to mix without excessive consumption of power and they fitted on a strong 50x50x5 mm tube
 - Good accessory to finish perfectly the work of tamping, combined with the roller.
- The central tine located in the middle of the 2 rollers avoid any kind of ridges for perfect levelled surface

4.2 Lateral deflectors



- Lateral deflectors are used to control the flow of the soil.
- The aim of the deflector is to avoid rids on each side of the machine.
- They are mounted on parallelogram to follow the ground contour, to retract when stones or accumulation of straw
- An axle limits the deflector working depth to avoid damaging it when reversing.
- No tools are necessary to adjust it.
- They are foldable on rigid version

4.3 Rollers

Type of roller	Description	Availability
Cage roller 	<ul style="list-style-type: none"> - Diameter 550 mm - Great for light soils - Good work in dry conditions - The most economical roller - Weight : 90 Kg/m 	All machines
Double cage roller 	<ul style="list-style-type: none"> - Diameter 400 mm - Great for light soils - Good compromise between crumbling and depth control - Weight : 155 Kg/m 	Not on trailed machines
Actiflex 	<ul style="list-style-type: none"> - Diameter 540 mm - For all soil types - Intensive mixing effect - Good compromise between recompaction and cost - Low sensibility to wearing soil - Weight : 160 Kg/m 	All machines
Actiring 	<ul style="list-style-type: none"> - Diameter 540 mm - Light to medium soil - Good crumbling power - Sensitive in stony conditions - Weight : 160 Kg/m 	All machines
Actipack 	<ul style="list-style-type: none"> - Diameter 560 mm - Suitable for soils medium to heavy. - Effective in soil clods, sticky or wet - Very good quality of recompaction - Scrapers anti-jam - Weight : 220 Kg/m 	All machines
Actipress twin 	<ul style="list-style-type: none"> - Diameter 565 mm - For all soil types - Good driving effect thanks to soil to soil action - Self-cleaning effect with overlap - Low sensibility to blockages in stony conditions - Weight 250 Kg/m 	Not on trailed machine/4m rigid/6m fold

5.1 Linkage



Hydraulic parallel lifting



Fixed eye \varnothing 55 mm

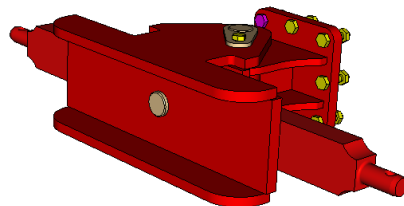


Pivoting pulling eye \varnothing 50 mm

Parallel lifting must be quipped with Fixed eye or pivoting pulling eye



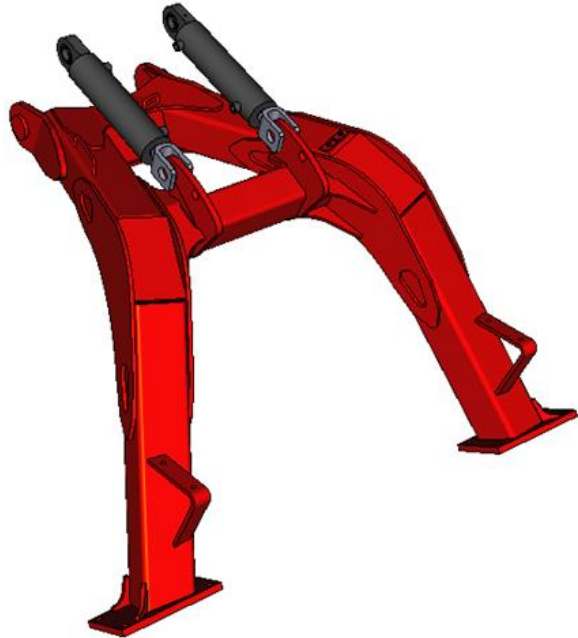
Simple telescopic bar



Cross shaft Cat.III and IV

Cross shaft required with telescopic bar

5.2 Wagon and transport wheels



A wagon linked to the main beam by a 50 mm axle and 2 hydraulics cylinders (40x90 mm) allows to lift the machine.

Cylinder are equipped with guiding bush to ensure correct sliding and reduce stress on rod.

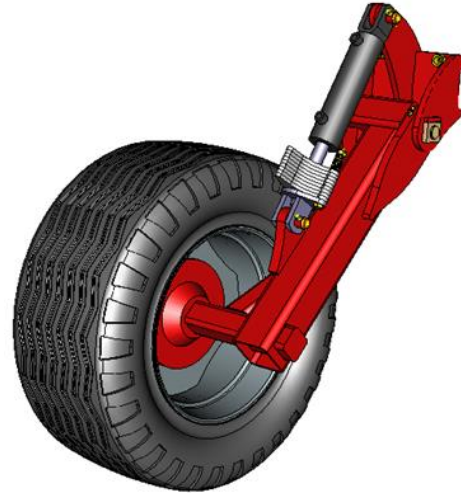


Tyre size	Pressure
400/60 - 15,5	3,6 bars (52 <i>psi</i>)
480/45 - 17	3 bars (44 <i>psi</i>)
520/50 - 17	3,3 bars (48 <i>psi</i>)

Recommended torque gudgeon M18x150

→ 270 N.m (199 *ft.lbf*)

5.3 Front wheels



Hydraulic front wheels

Tyre size	Pressure
340/55-16	4 bars (58 psi)

Recommended torque gudgeon M18x150
→ 270 N.m (199 ft.lbf)

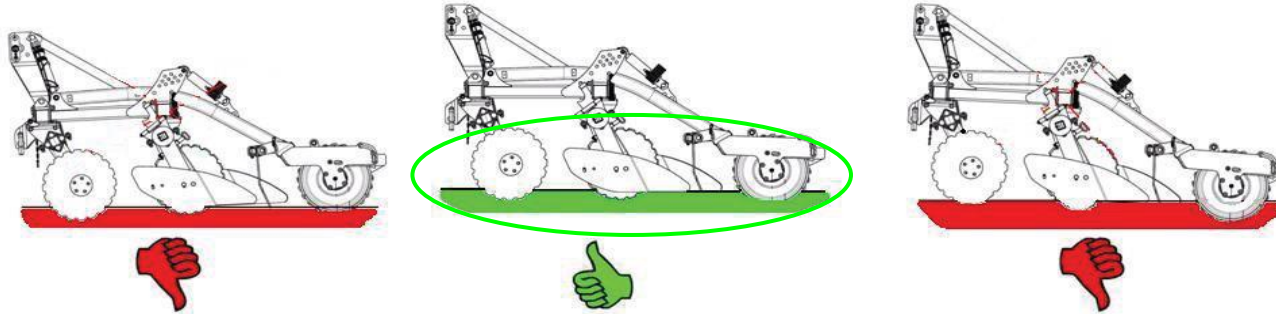
5.4 Front equipment

Clod board equipment:

- Clod board is available on Qualidisc Farmer T and Qualidisc Pro T to increase the crumbling performance on ploughed land
- The Clod board angle can be adjusted directly from the cab while driving thanks to the master slave cylinders



6.1 Stability

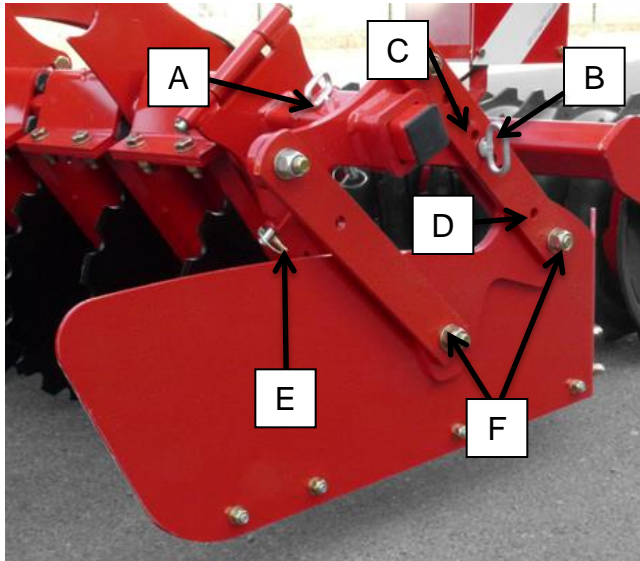


- The front and rear disc rows must work at the same depth
- If the front discs work deeper than rear, the machine will move to the right side during at work.
- If the rear discs work deeper than rear front, the machine will move to the left side during at work.
- When front and rear discs work at the same depth, Qualidisc is stable at work.



For the stability and constant depth, never hitch the machine on the slotted hole.

6.2 Lateral deflectors

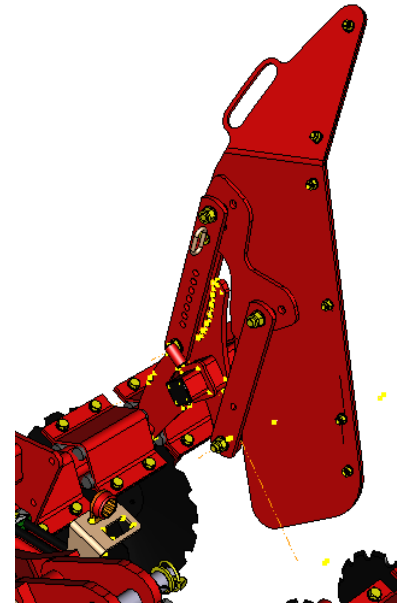


Horizontal adjustment:

- Remove the pin (A)
- Slide the deflector on the tube : 3 different positions available

Height adjustment:

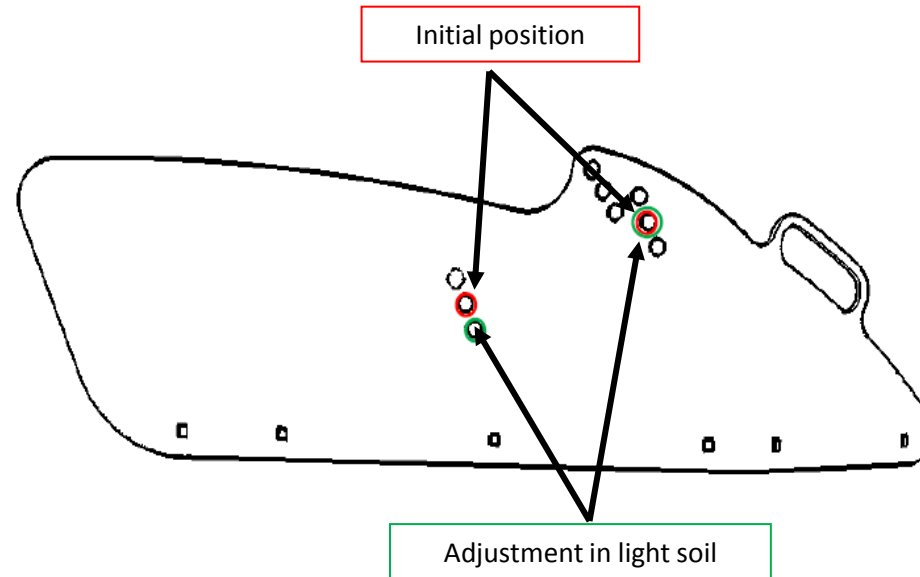
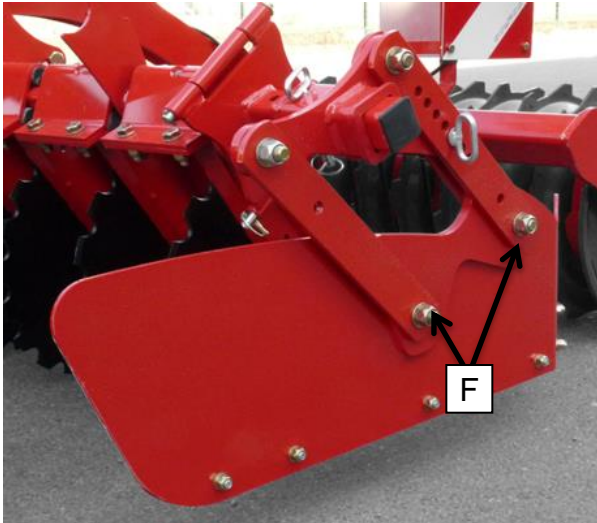
- Remove the pin (B)
- Lift the deflector
- Engage the spindle in one of the positions (C)
 - Lower hole: high working depth
 - Upper hole: low working depth



Transport position (rigid)

- Remove the pin (B)
- Lift the deflector
- Engage the pin in the position (D) (Transport)
- Remove the pin (E)
- Fold deflector 180° rotation
- Engage the spindle (E) to block deflector in transport position.

6.2 Lateral deflectors

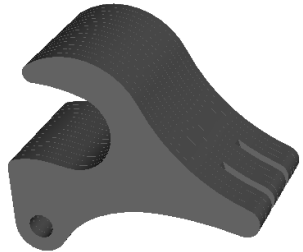


Deflector adjustment in light conditions

- Loosen the nuts (**F**)
- Remove front screw
- Place it on the bottom hole (in green on drawing)
- Re-tighten bolts

6.3 Hydraulic depth

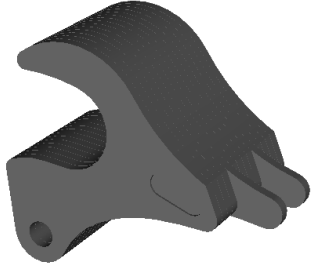


Number of spacer	View
14 spacer/cylinder (Pro) 9 spacer/cylinder (Farmer)	

- Raise the machine.
- Use the hydraulic distributor to lower roller.
- Add spacers to reduce the working depth or remove them to increase it → *One spacer correspond average of 1 cm depth to 1,4 on the Farmer*
- Apply the same setting on all roller cylinders
- Operate hydraulic distributor to set the cylinders against their spacers.

6.4 Mechanical depth

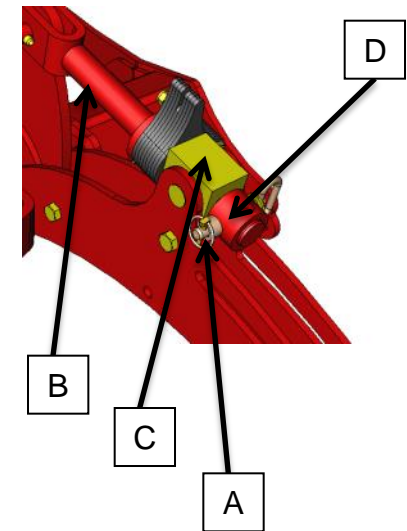


Number of spacer	View
14 spacer/cylinder (Pro) 9 spacer/cylinder (Farmer)	

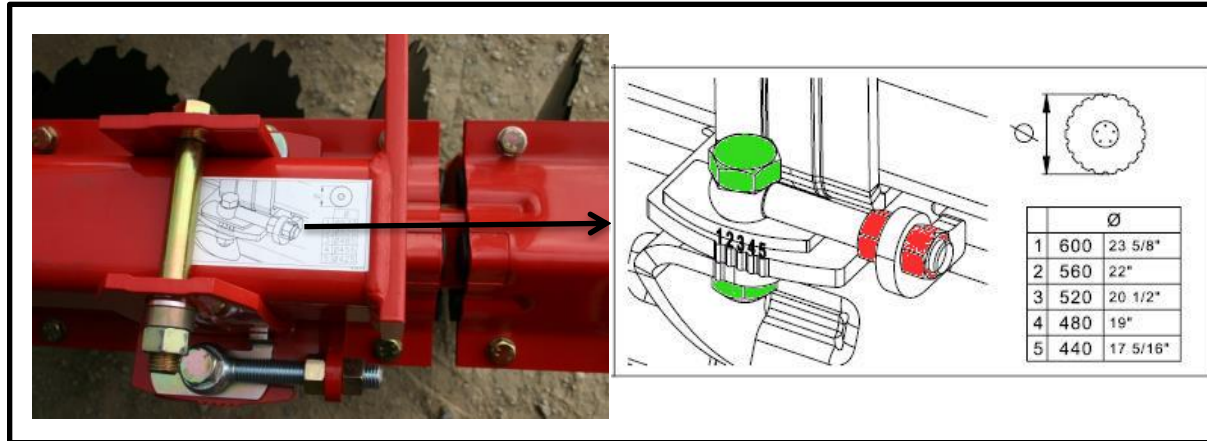
- Raise the machine.
- Stabilise the machine.
- Add spacers to reduce the working depth or remove them to increase it →
One spacer correspond average of 1 cm depth to 1,4 on the Farmer
- Apply the same setting on all roller cylinders

Adjusting the load distribution:

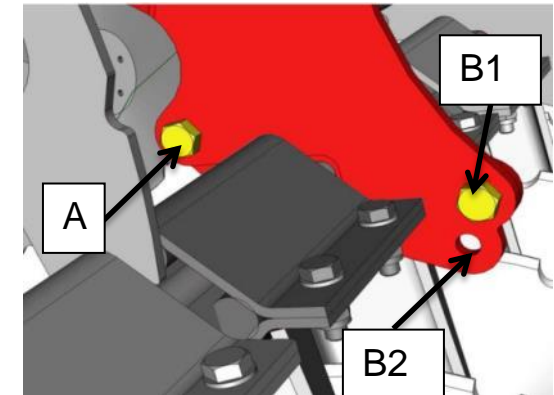
- Put the machine on the ground.
- Reach the desired working depth.
- Remove the pin **(A)**.
- On the rod **(B)**, identify the holes located the closest to the guide **(C)**.
- Bring the spindle holes of the ring **(D)** in line with those of the rod.
- Position the pin **(A)**.



6.5 Lateral adjustment



Qualidisc Pro



Qualidisc farmer

To maintain a perfect cutting quality, the Qualidisc has a lateral adjustment.

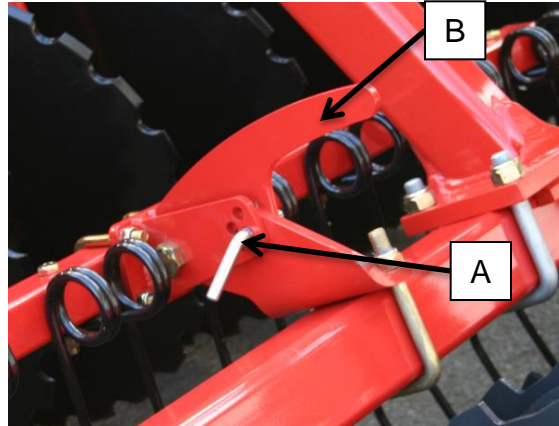
- Qualidisc Pro

- To adjust overlapping :
- Unloose both nuts (in red)
- Unloose M24 bolts (in green)
- Adjust the setting according to the diameter of the disc. Use 27 spanner
- Re-tighten all nuts and bolts

Qualidisc Farmer

- To adjust over lapping :
- Unloose bolts (A)
 - Remove bolts from hole (B1)
 - Adjust disc gang and re-place bolts on hole (B2)
 - Re-tighten all bolts

6.6 Finger harrow



Angle adjustment:

- Remove the pin **(A)**. 2 pins per section.
- Turn the row with the handle **(B)** to the required angle.
- Place the pin **(A)** in one of the 4 positions.
 - Minimum angle to break up the entire flow.
 - Maximum angle to smooth the flow.

7.1 Actipack/Actiring knives

For a finish levelled and crumbled / seedbed preparation:

- The height of knives must be adjusted in function of the ground, but also to the desired finish.
- Set the knives in position N° 1 (see drawing)
- Set working depth.
- Try the machine and check the work: if necessary increase pressure on knives (change position → N°2 or N°3).

Settings advice:

Light soil or sandy soil: knives raised (OFF)

Soil cloddy, clay: knives in the down position (1,2 or 3)

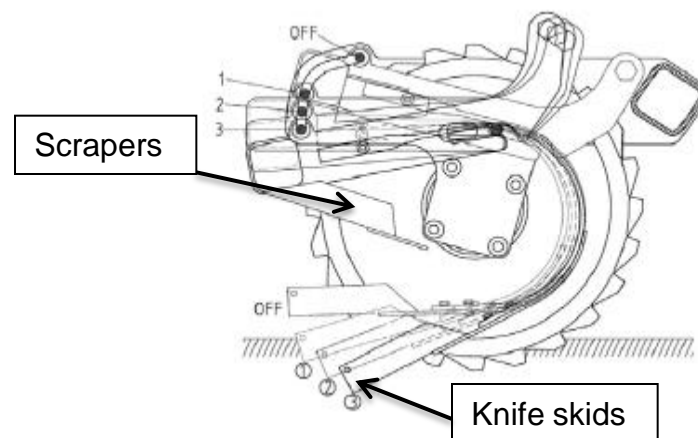
For a coarse finish / planting after winter or long period:

This surface condition can be requested if it is a work before winter or if the field should be left as is, subject to precipitation before seeding. So we want a coarser surface condition to avoid crusting.

To do this, raise up the knives and put them in the OFF position (retracted).

To adjust the roller (see the pictures):

- Loosen the countersunk screw with the small wrench
- On the other side, insert the long Kverneland spanner in the welded nut to maintain the rear rail
- Loosen the countersunk screw
- Choose the position (1,2,3,Off) with the long spanner
- Tighten the countersunk nut of the right and left side



Position « 3 »



Position « Off »

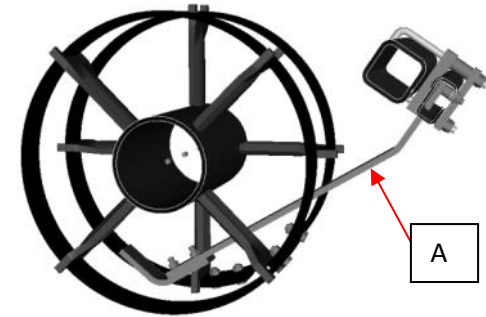


Position « 1 »

7.2 Actiflex

For a finish levelled and crumbled / seedbed preparation:

We advise not to remove the levelling blades indicate in **(A)**

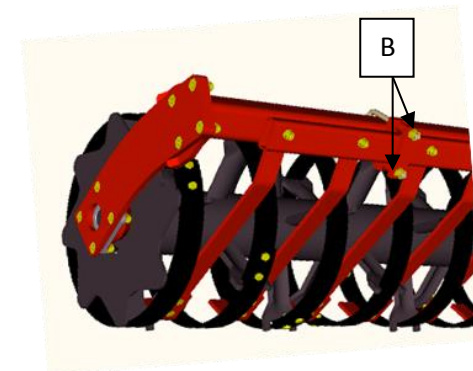
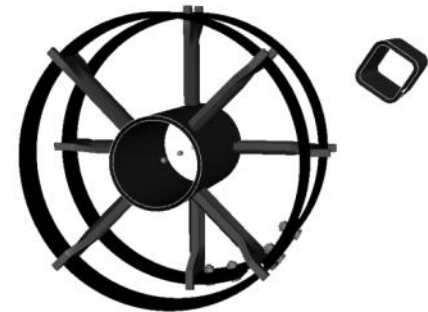


For a coarse finish / planting after winter or long period

We advise you to remove the levelling blades:

- Loosen the screws **(B)** in all the supports (3 to 6 supports depending on the width)
- Remove the support

To reset the levelling blades, apply the reversed procedure

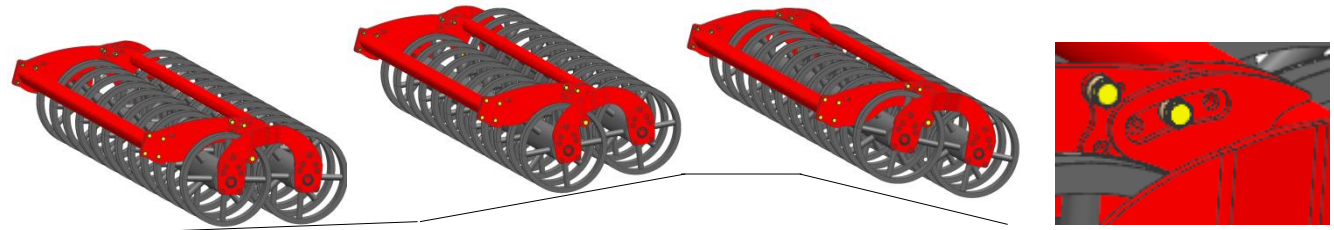


7.3 Actipress twin

Free rotation position :

Standard position

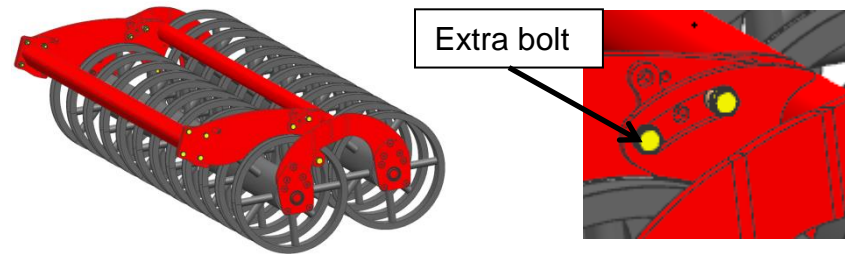
- Put bolts on the middle hole



Work with only front roller position :

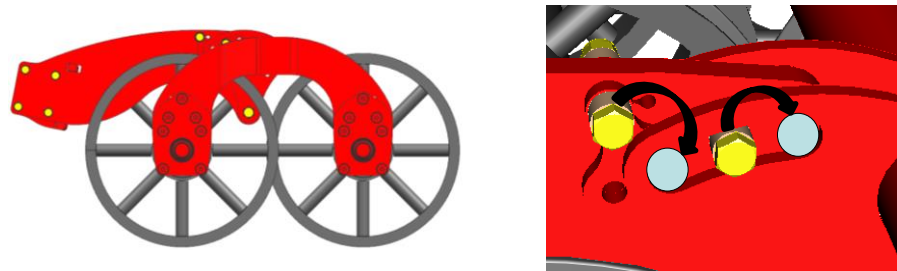
For a rough finish, ideal before winter

- Rotate the rollers to have just the front roller in contact on the soil
- Put extra bolts on the front hole to block on this position



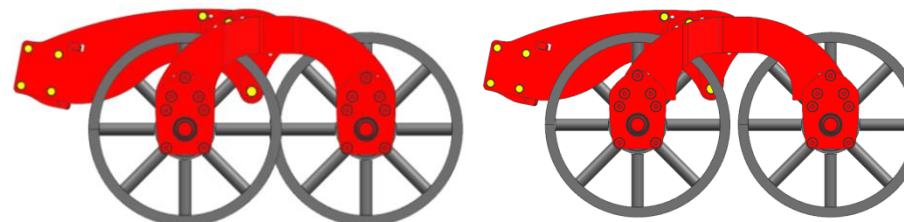
Locked position :

- Set the roller in flat position
- Block the roller with 1 bolt on the front hole and 1 bolt on the rear hole



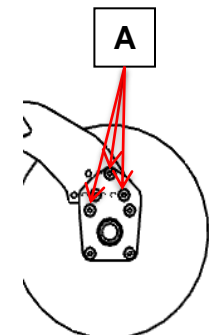
Overlapping adjustment :

- Loosen bolts **(A)** on bearings brackets.
- Change position according to your needs
- Tighten bolts

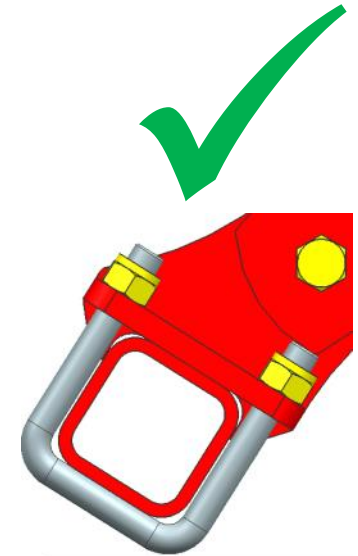
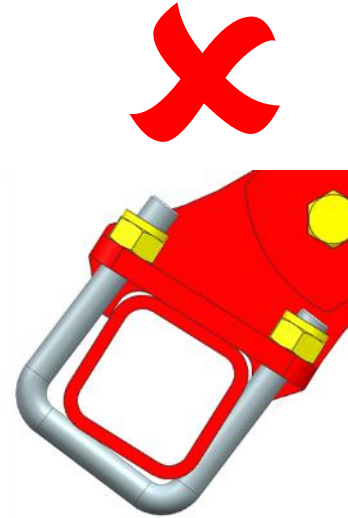
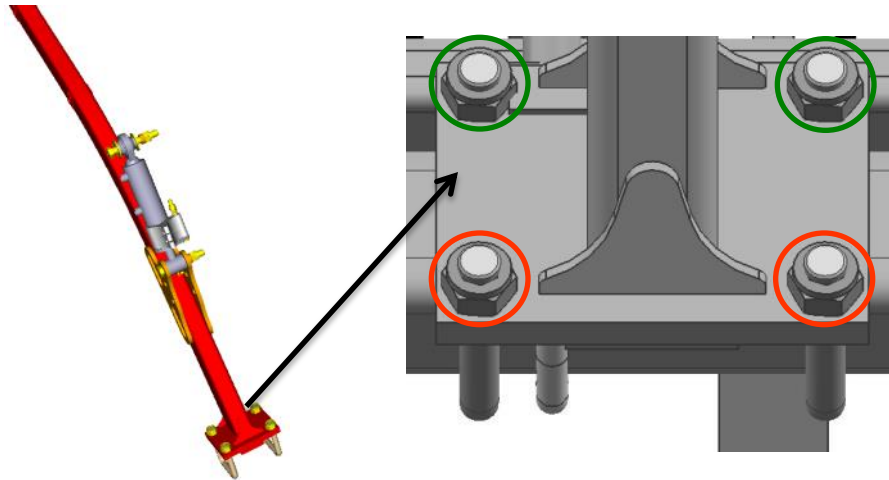


Normal conditions

Wet conditions and lots of residue



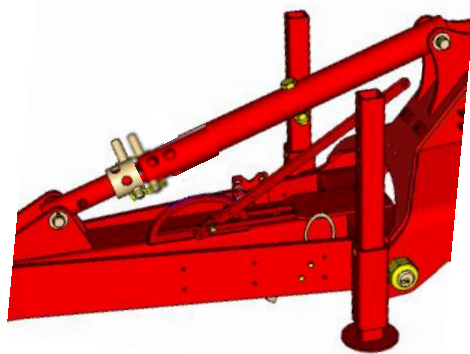
7.4 U-bolts on rollers



Tightening procedure :

- Screw green nuts in contact to plate
- Tighten red nuts to preconized torque → 667 N.m / 492 ft.lbf
- Tighten green nuts to preconized torque → 667 N.m / 492 ft.lbf

8.1 Before transport



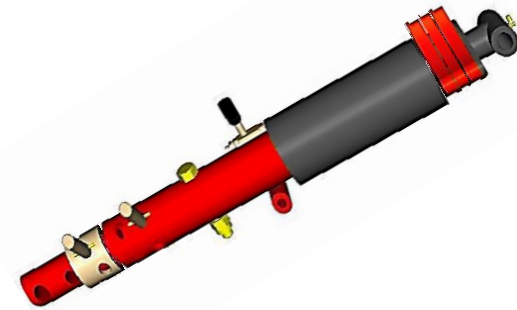
With telescopic bar

- Put the spindle in a fixed hole of the telescopic bar to lock during the transport. The operation is facilitated by using the second pin provided.
- Set the grey bush to get the frame horizontal in transport position, raise the machine and place the second pin in fixe hole.
- Raise the machine completely then fold it.
- Lower the machine, refer to the sticker on the wagon cylinder

Always close the hydraulic safety valve before transport.



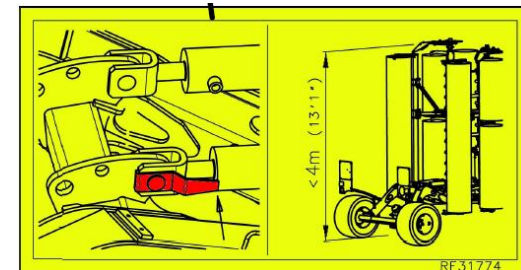
Never lift the machine completely for transport, to allow the accumulator complete its function as a shock absorber.



With parallel lifting

- Raise the machine completely then fold it using the hydraulic functions.
- Place all spacers on drawbar cylinder
- Lower the machine, refer to the sticker on the wagon cylinder

Always close the hydraulic safety valve before transport.



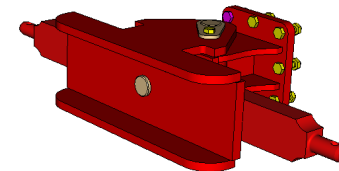
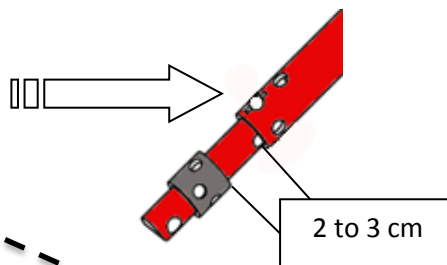
8. Adjustments on trailed

8.2 Before work

With telescopic bar



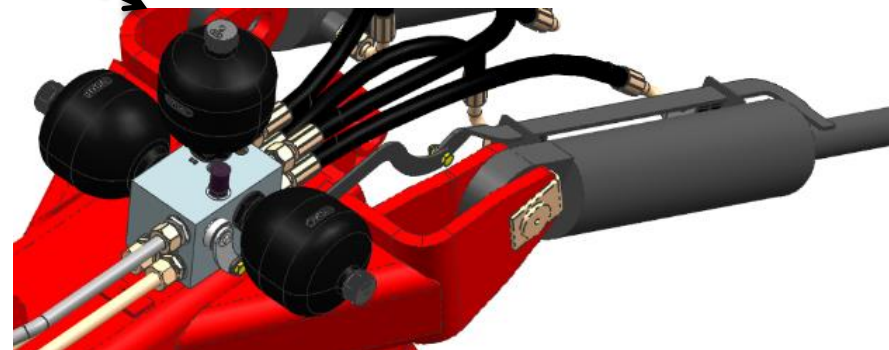
With front wheel



When equipped with
crossshaft

Proceed as follows to switch the machine in work position:

- Open the safety valve function of the hydraulic lifting.
- Fully lift the machine.
- Unfold the machine
- Lower the machine to the soil.
- Raise the carriage fully.
- The suspension is automatically activated



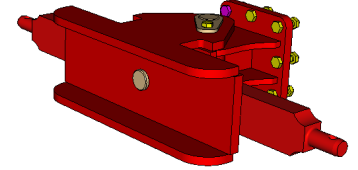
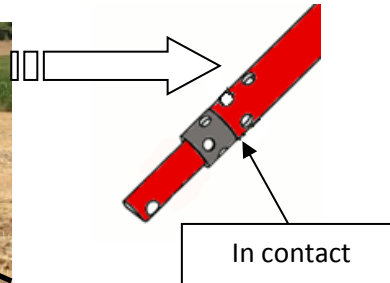
8. Adjustments on trailed

8.2 Before work

With telescopic bar



Without front wheel



When equipped with
crossshaft

Proceed as follows to switch the machine in work position:

- Open the safety valve function of the hydraulic lifting.
- Fully lift the machine.
- Unfold the machine
- Lower the machine to the soil.
- Raise the carriage fully.
- The suspension is automatically activated

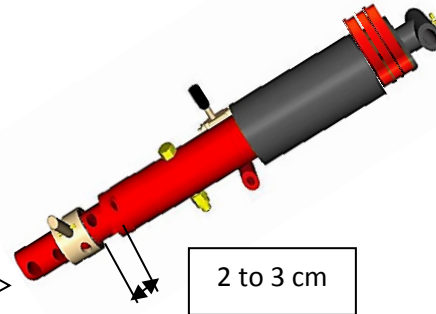


8.2 Before work

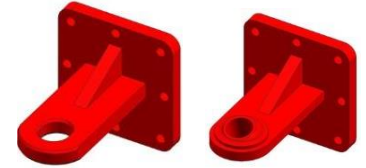
With parallel lifting



With front wheel



2 to 3 cm



When equipped
with fixed eye and
pivoting pulling
eye

Proceed as follows to switch the machine in work position:

- Open the safety valve function of the hydraulic lifting.
- Fully lift the machine.
- Unfold the machine
- Lower the machine to the soil.
- Raise the carriage fully.
- The suspension is automatically activated

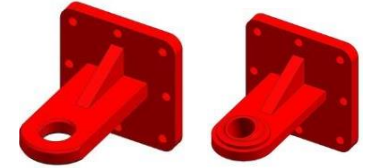
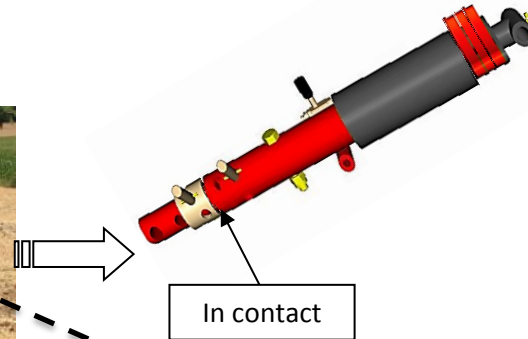


8.2 Before work

With parallel lifting



Without front wheel



When equipped
with fixed eye and
pivoting pulling
eye

Proceed as follows to switch the machine in work position:



- Open the safety valve function of the hydraulic lifting.
- Fully lift the machine.
- Unfold the machine
- Lower the machine to the soil.
- Raise the carriage fully.
- The suspension is automatically activated



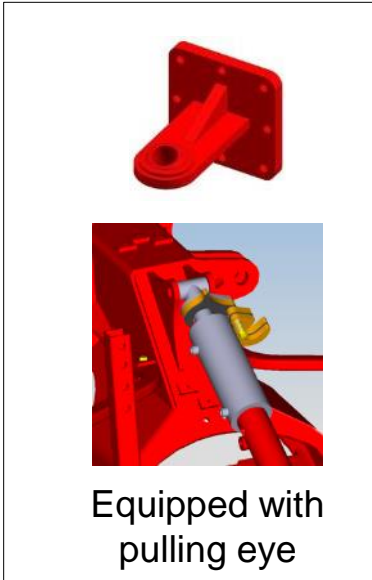
8.3 Depth with front wheels




- Raise the machine.
- Use the hydraulic distributor to lower rollers and wheels.
- Add spacers to reduce the working depth or remove them to increase it
→ *One spacer correspond average of 1 cm depth to 1,4 on the Farmer*
- Apply the same setting on all roller cylinders and wheel cylinders.

Number of spacer	View
Rear cylinders: 14 spacer/cylinder (Pro) 9 spacer/cylinder (Farmer)	
Front cylinders: 14 spacer/cylinder (Pro) 9 spacer/cylinder (Farmer)	

8.4 Depth without front wheels



Number of spacer	View
<p>Rear cylinders:</p> <p>14 spacer/cylinder (Pro)</p> <p>9 spacer/cylinder (Farmer)</p>	



- Raise the machine.
- Use the hydraulic distributor to lower rollers
- Add spacers to reduce the working depth or remove them to increase it → *One spacer correspond average of 1 cm depth to 1,4 on the Farmer*
- Add or remove steel spacers on drawbar cylinder to adjust the working depth at the front.

- Raise the machine.
- Use the hydraulic distributor to lower rollers
- Add spacers to reduce the working depth or remove them to increase it → *One spacer correspond average of 1 cm depth to 1,4 on the Farmer*
- Adjust the working depth at the front with the height of tractor's lifting arms.

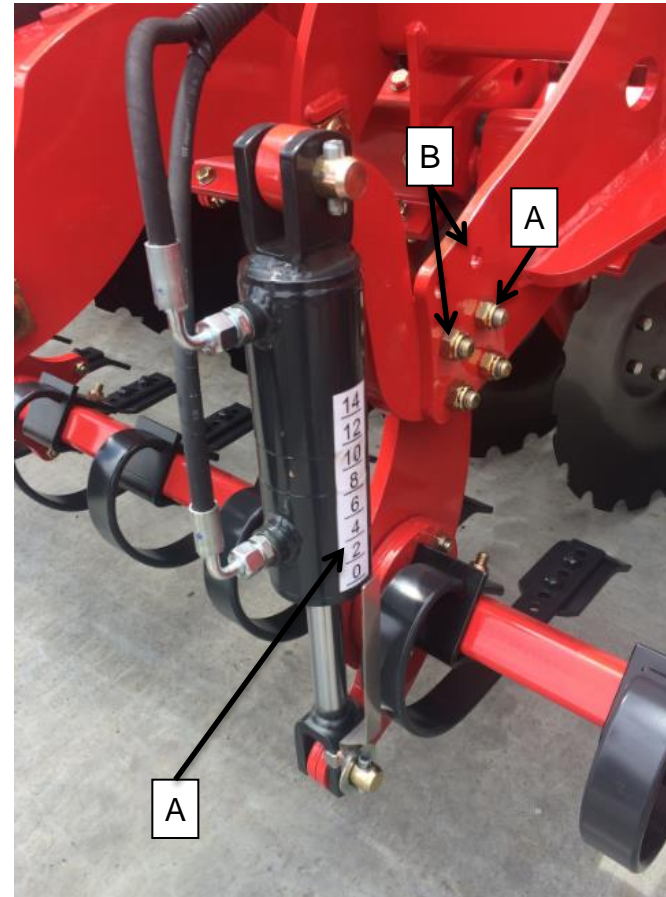
8.5 Front equipment

Height of the clod board:

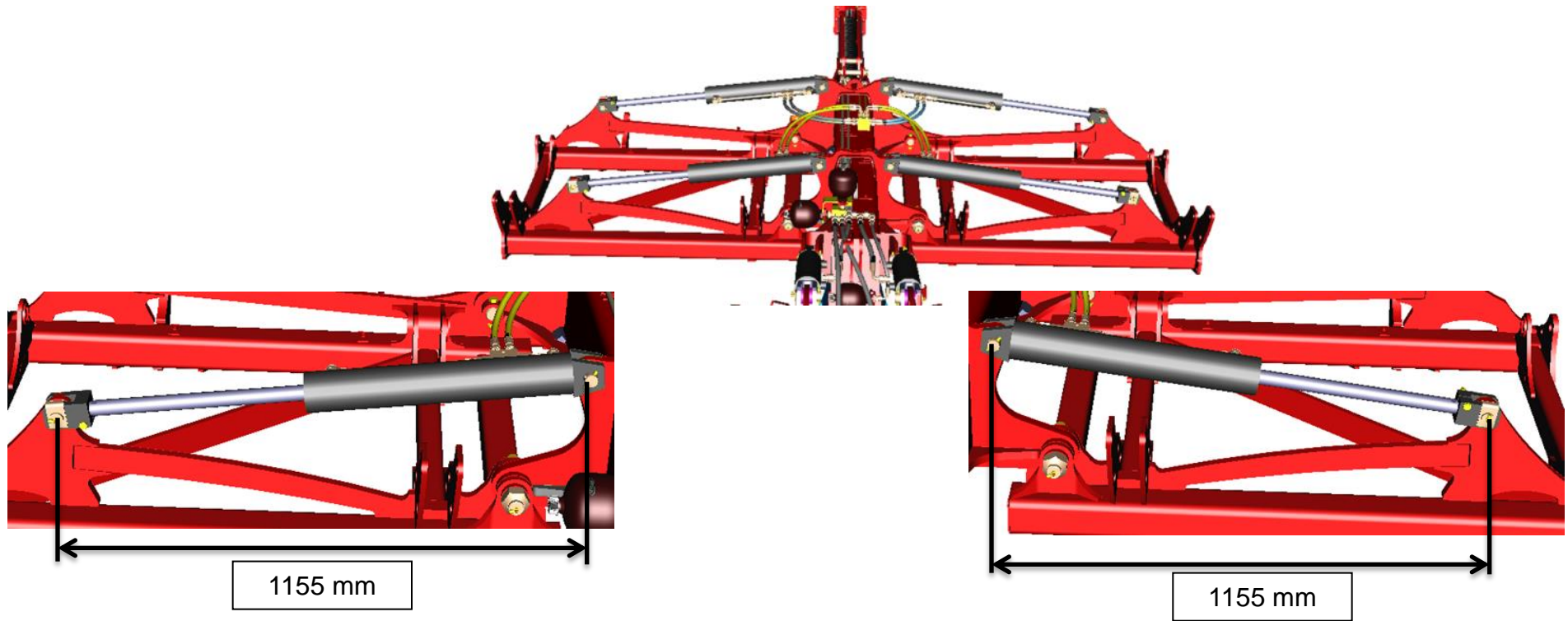
- Loosen nuts **(B)**
- Remove bolts
- Place the bracket of the cylinder and the clod board on the top position **(B)**
- Re-tighten bolts

Angle of the clod board:

- Actuate the cylinders
- See the scale **(C)** to set the angle



8.6 Folding cylinders – Qualidisc Pro T

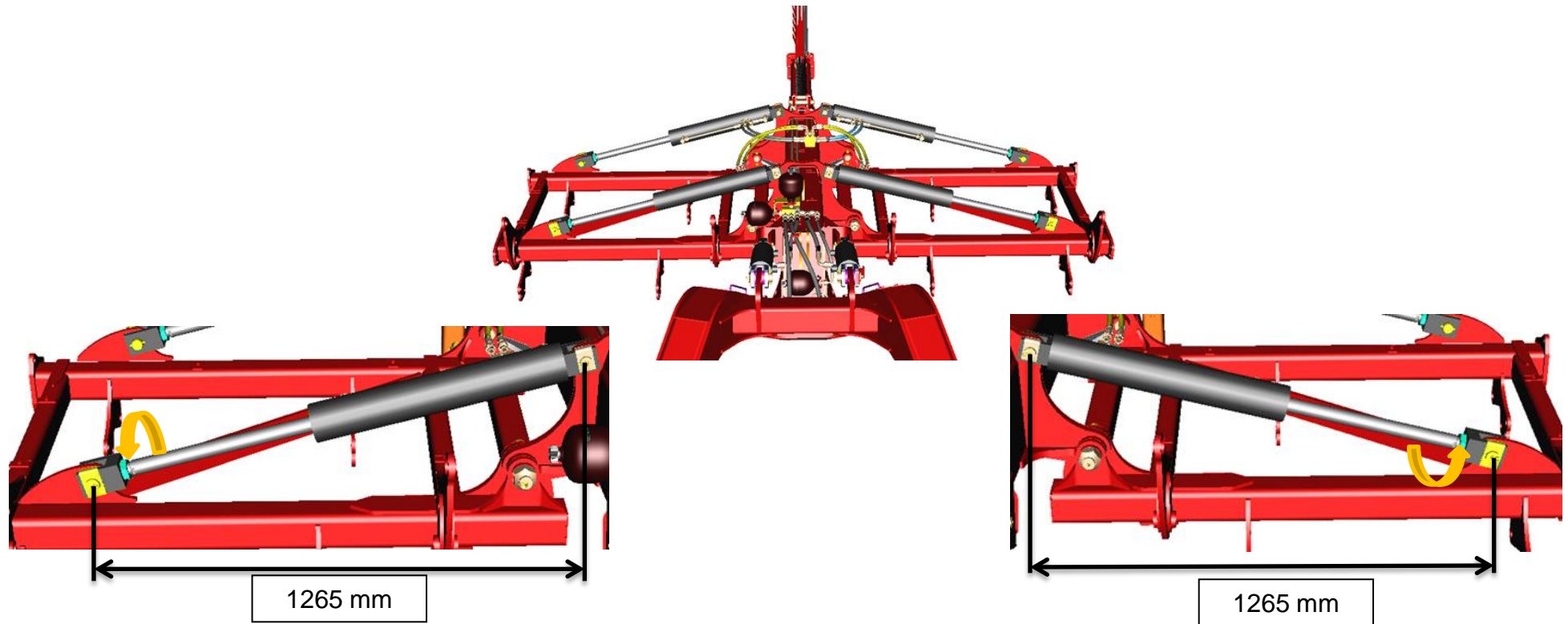


Flatness – cylinder length:

- Remove the bolt on the clevis
- Remove the pin from the clevis
- Adjust the length by screwing or unscrewing the clevis
- Replace the pin
- Screw the nut of the bolt

Number of turn maximum of clevis : 4,5 turns

8.7 Folding cylinders – Qualidisc Farmer T



Flatness – cylinder length:

- Unscrew the nut cylinder rod
- Remove the pin from the clevis
- Adjust the length by screwing or unscrewing the clevis
- Replace the pin
- Screw the nut on the rod of the cylinder

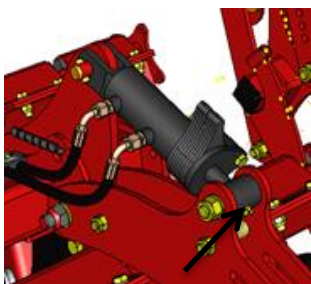
Number of turn maximum of clevis: 6 turns

9.1 Greasing

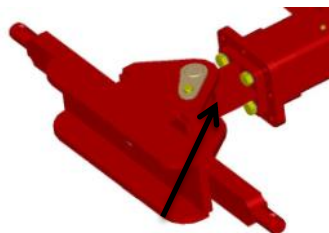
This pictogram is placed next to all greasing points.



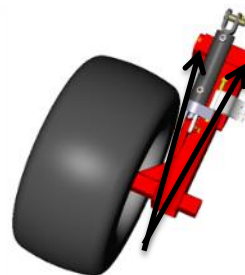
Cylinder depth : Every 40 hours



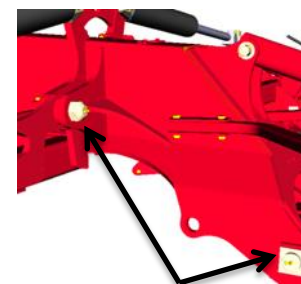
Cross Shaft : Every 20 hours



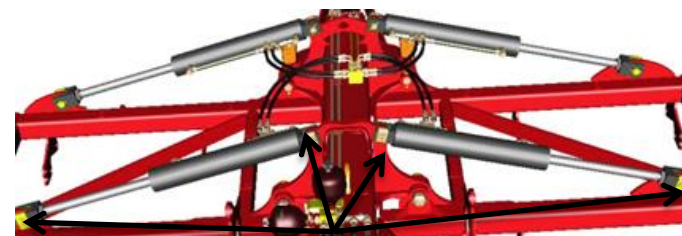
Front wheels : Every 40 hours



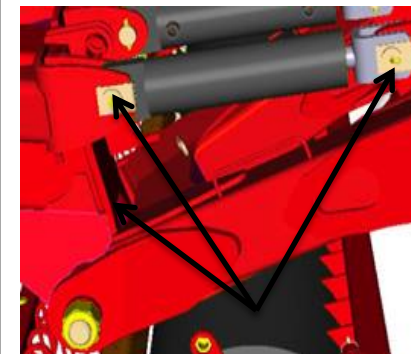
Drawbar + Folding sides : Every 40 hours



Folding cylinder : Every 40 hours



Wagon : Every 20 hours



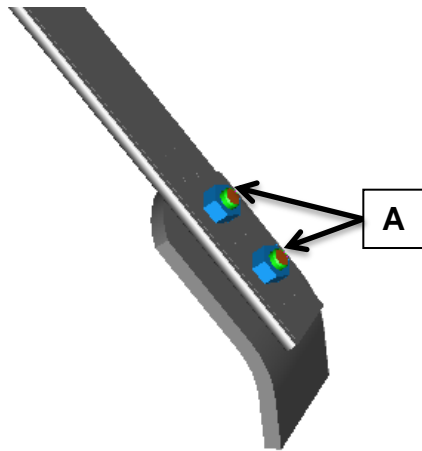
Transport wheels : once a year



Double cage rollers : Once a day

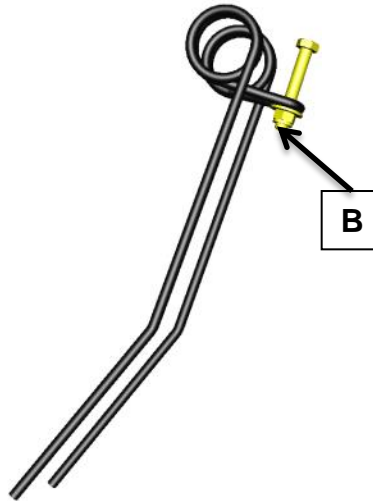


9.2 Wearing parts on accessories



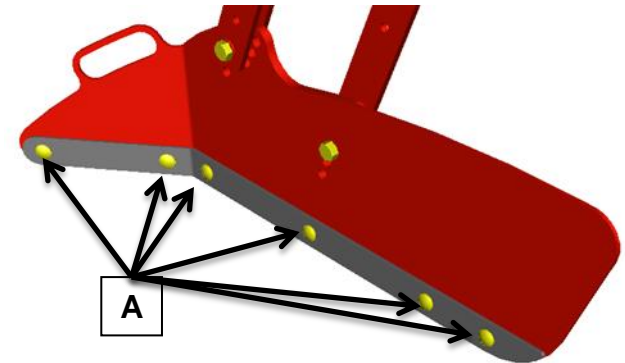
Clod board share replacement:

- Remove bolts **(B)**
- Change the blade
- Replace bolts
- Tighten bolts



Finger harrow replacement:

- Remove the bolt **(B)**
- Change the finger harrow
- Replace the bolt
- Tighten the bolt



Wear blank on deflector replacement:

- Remove bolts **(C)**
- Change the blank
- Replace bolts
- Tighten bolts

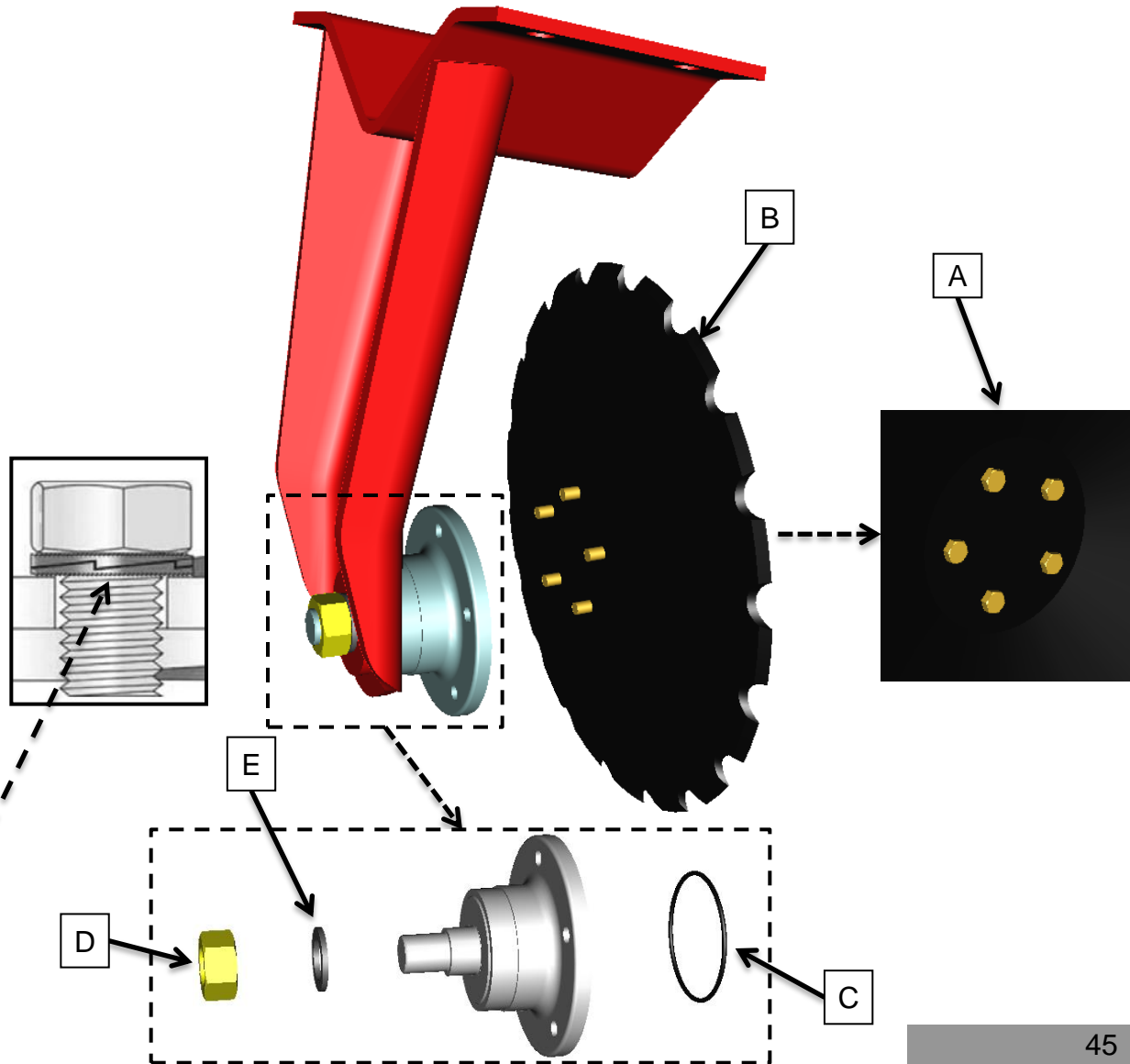
9.3 Wearing parts on row of disc

Disc replacement:

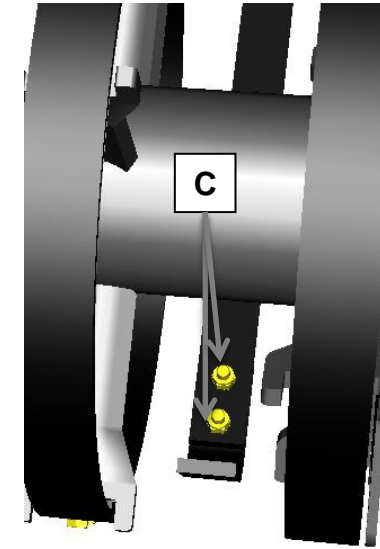
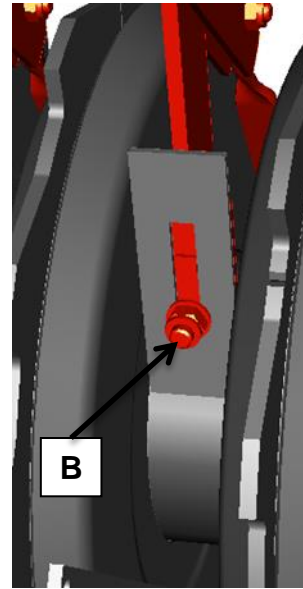
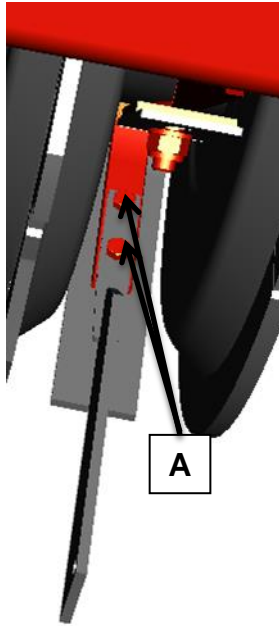
- Remove the 5 screws (A).
- Remove the disc (B).
- Check that the O-ring (C) on the hub is in its housing. Replace if damaged.
- Mount the new disc.
- Screw the 5 screws.

Hub replacement:

- Use kits:
 - A135051530: Qualidisc Farmer
 - RF30701X0: Qualidisc Pro
- Loosen the nut (D).
- Remove the lock washer (E).
- Remove the complete hub.
- Place the new hub
- Insert the lock washer (E) the right way round.
- Tighten the nut (D) with a tightening torque of 400 Nm



9.4 Wearing parts on rollers



Skid on Actiring/Actipack replacement:

- Remove bolts **(A)**
- Change the skid
- Replace bolts
- Tighten bolts

Scrapper on Actipack replacement:

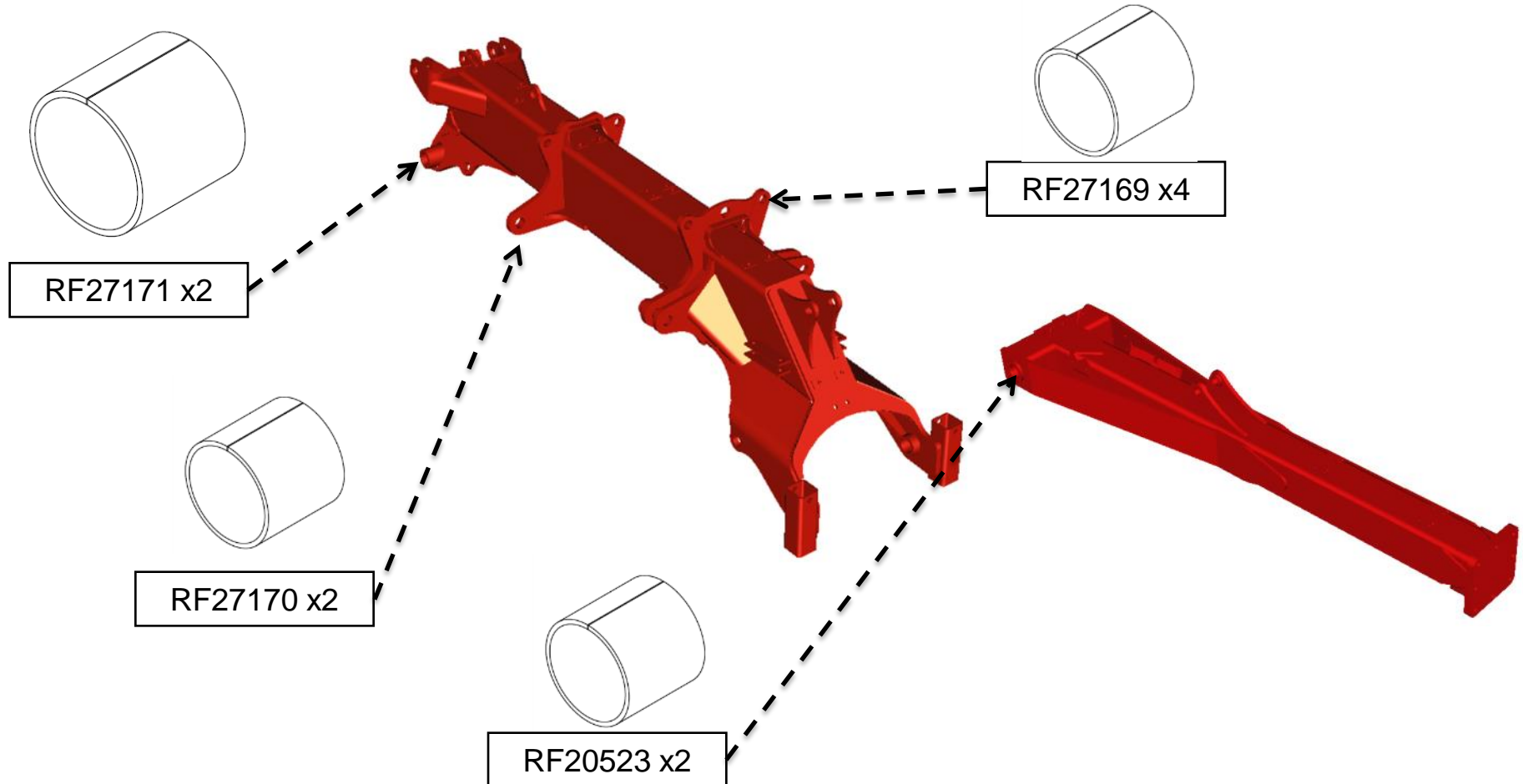
- Remove the bolt **(B)**
- Change the scrapper
- Replace the bolt
- Tighten the bolt

Wearing part on Actiflex replacement:

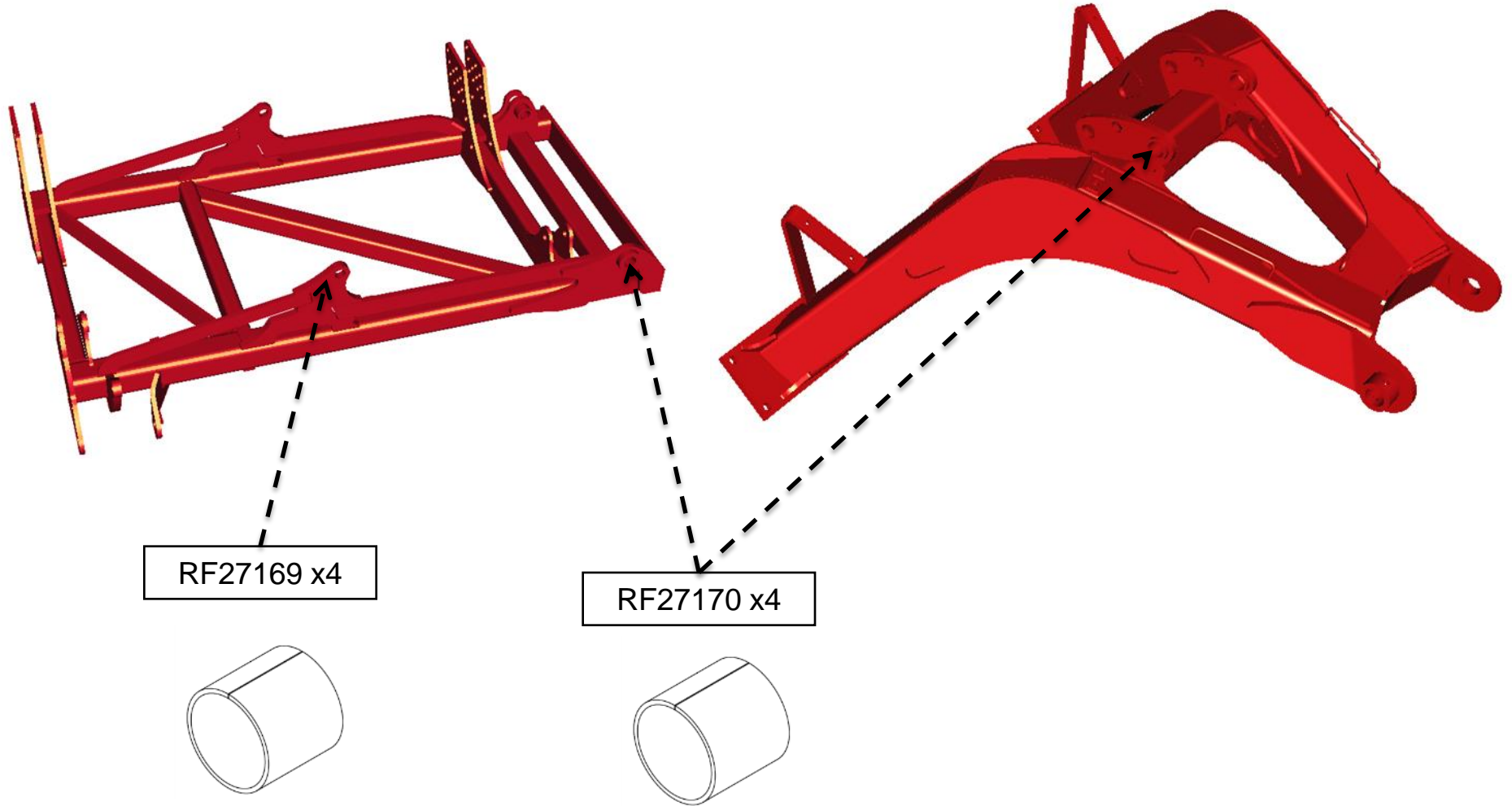
- Remove bolts **(C)**
- Change the wearing part
- Replace bolts
- Tighten bolts

9.5 Wearing bush

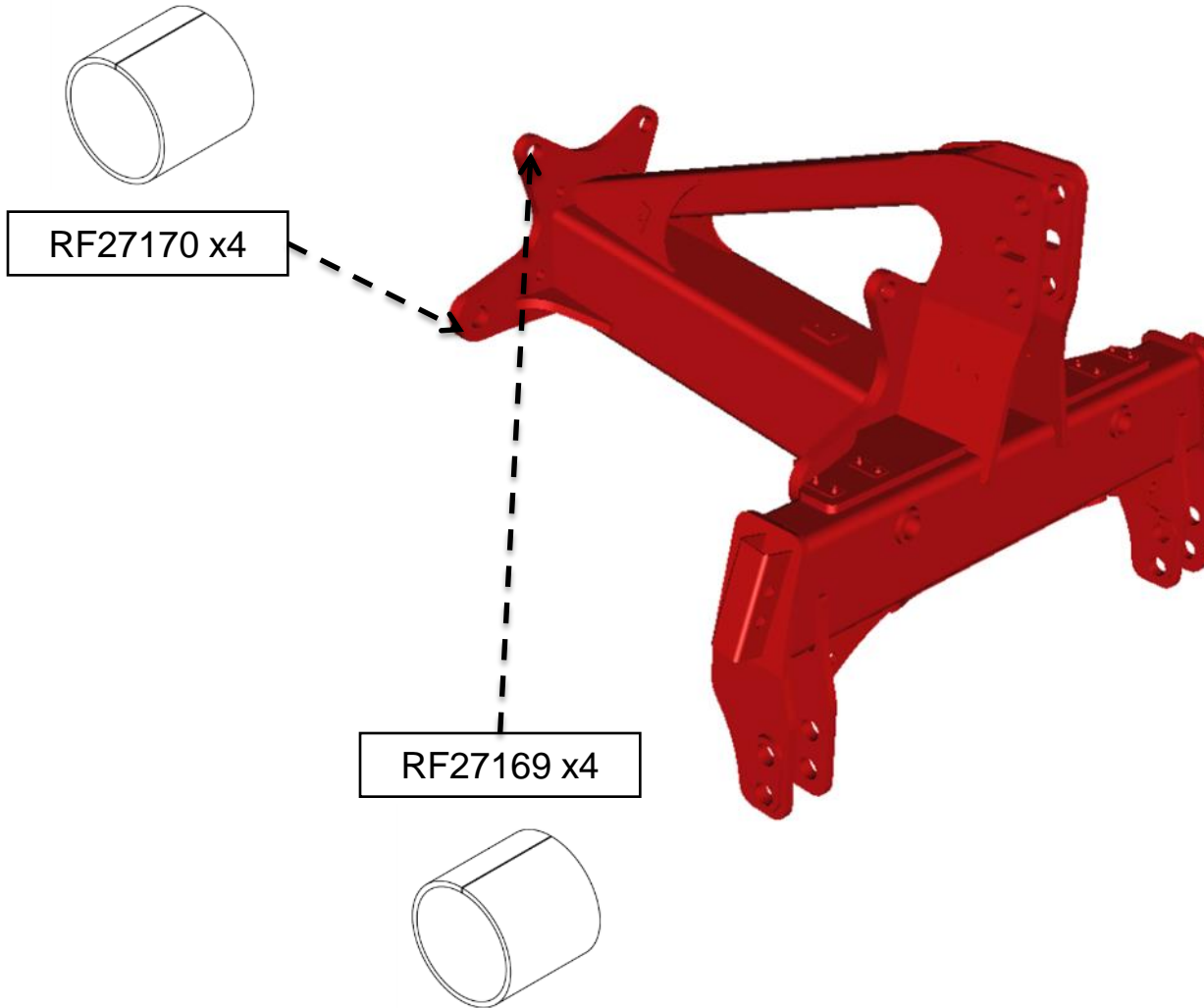
Wearing bush : replace bushes if significant play appears on a ringed articulation



9.5 Wearing bush



9.5 Wearing bush



9.6 Depth cylinders

For the depth cylinders :

The kit A or B can be originally installed on the cylinder and can be delivered by Spare Parts under the same part number. Main difference is on piston seals.



RF2986486



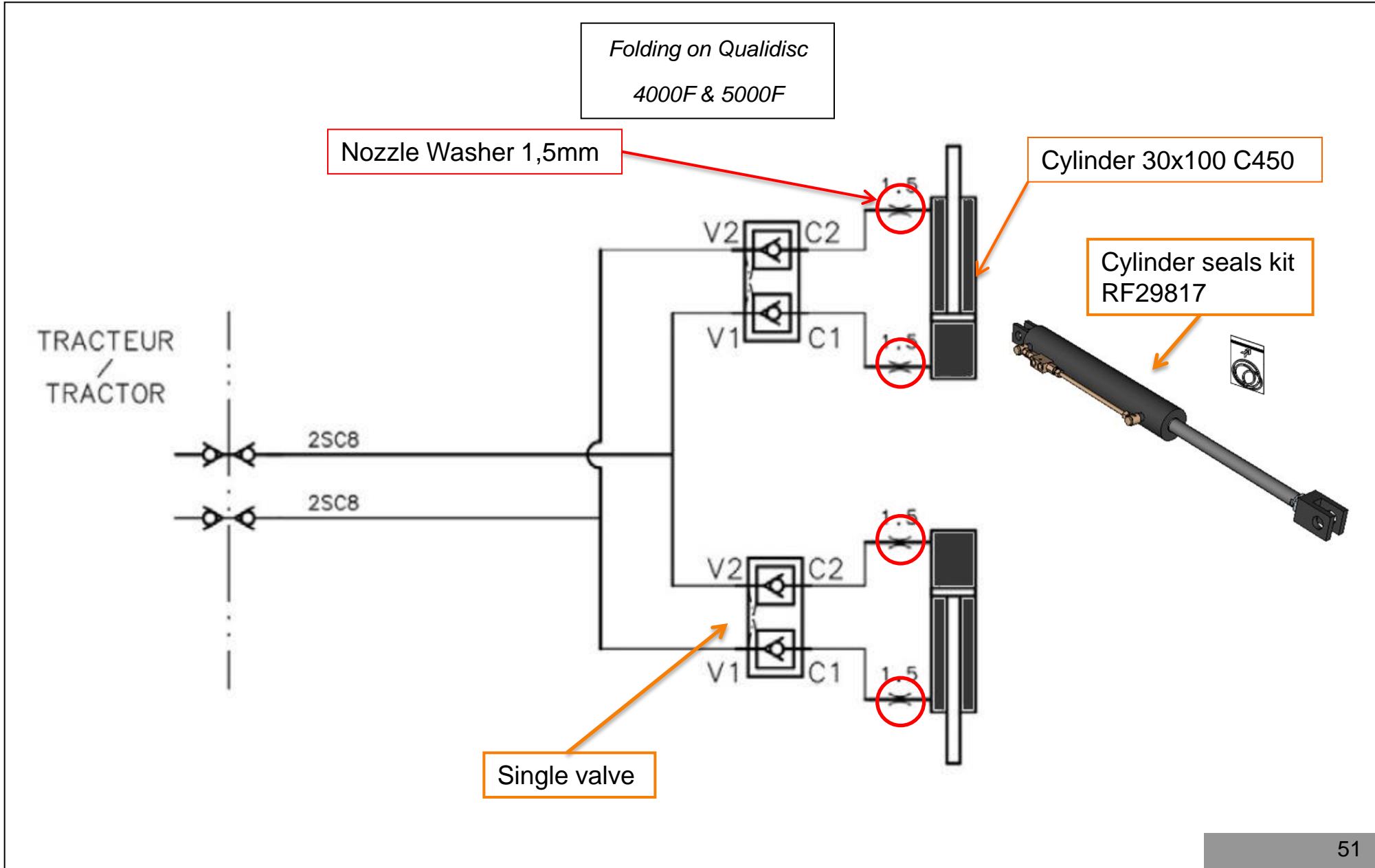
RF3182686

Hydraulic



	Kit "A"	Kit "B"
Overview from piston		
Number of seals in total	9	10
Seals used for piston	4	5

10. Hydraulic diagrams

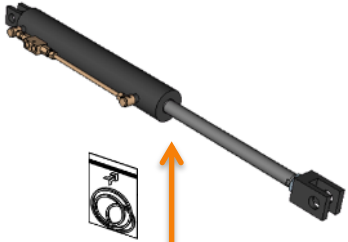
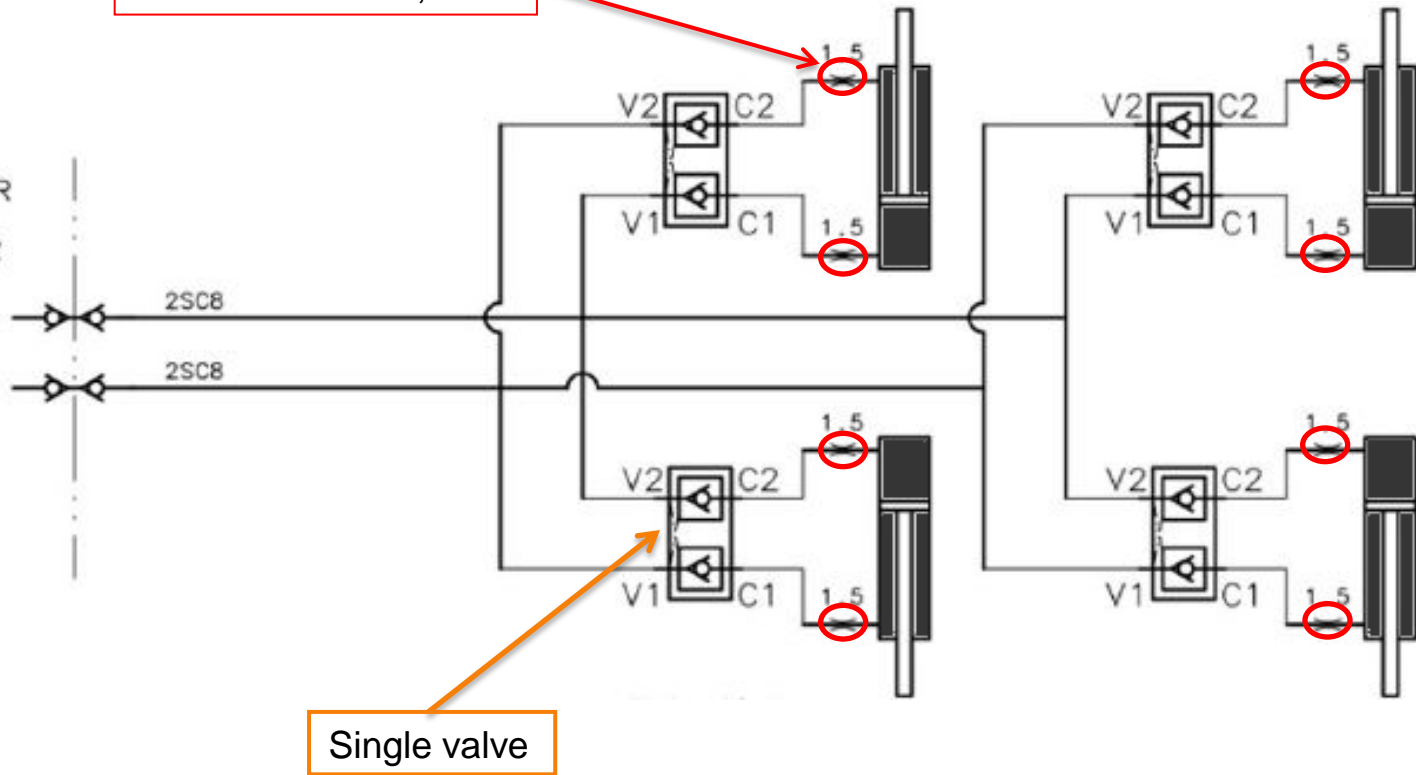


Folding on Qualidisc 6000F and Qualidisc trailed

Nozzle Washer 1,5mm

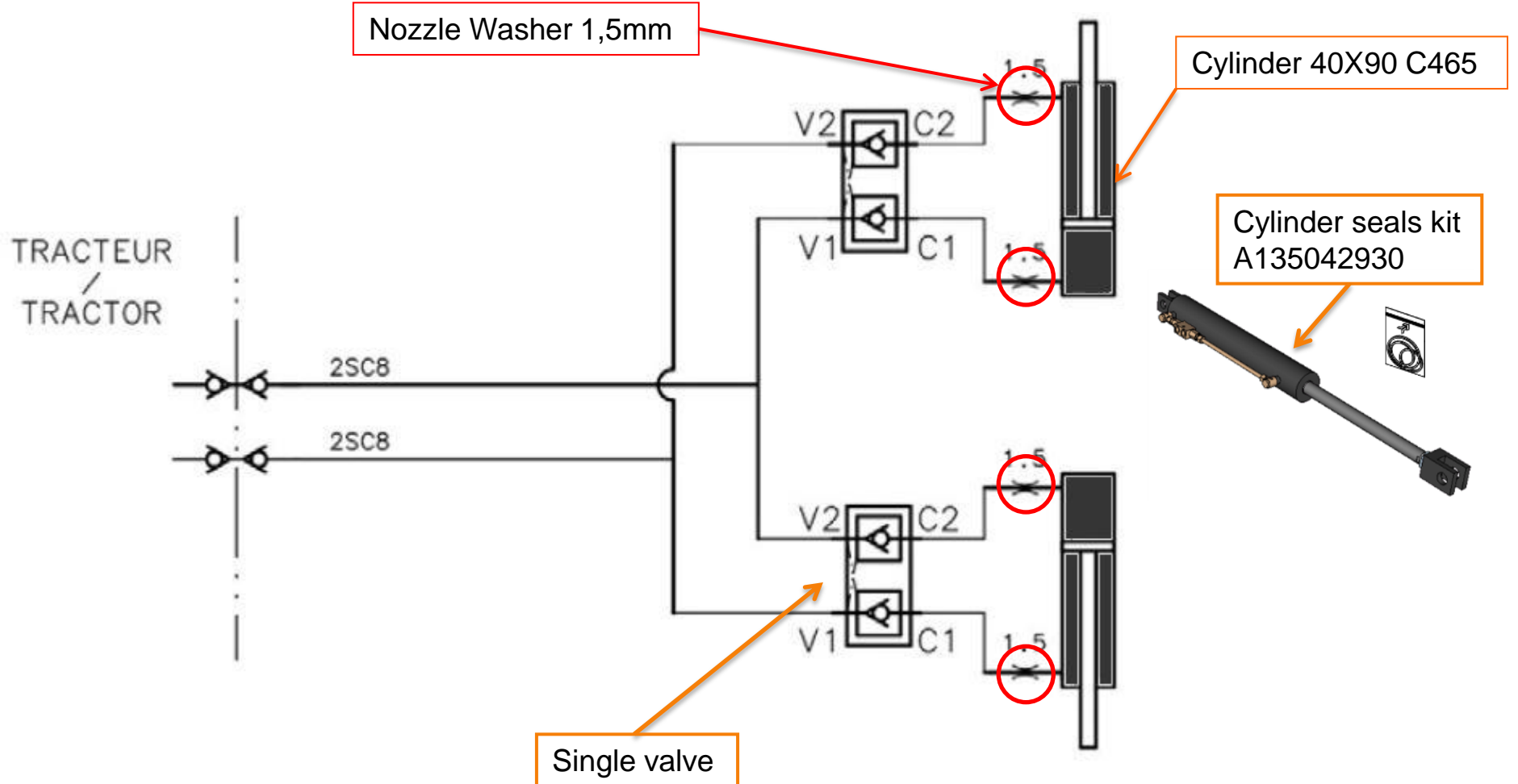
Cylinder 35x80 C450
Cylinder 35x100 C450 (7000T)

TRACTEUR
TRACTOR

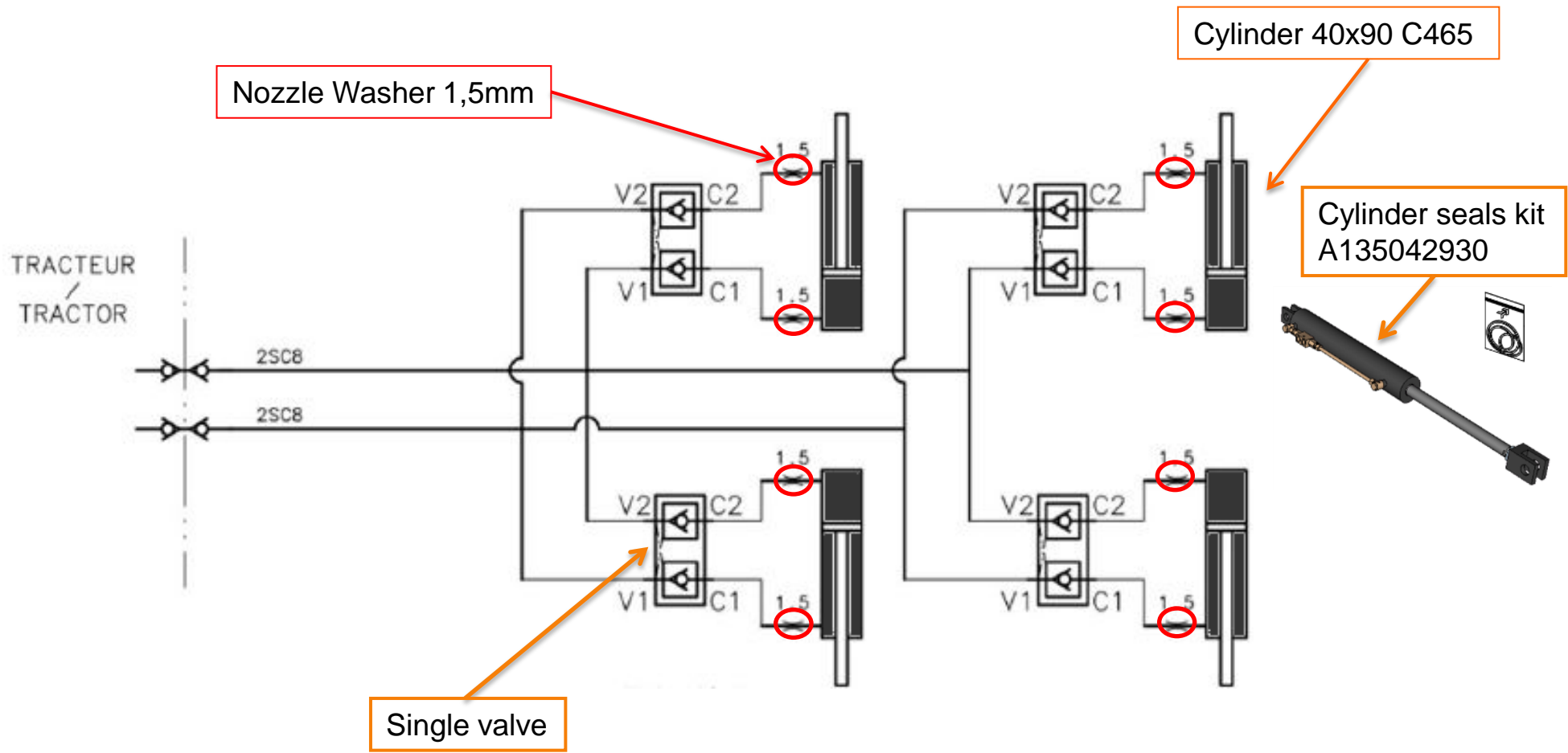


Cylinder seals kit
RF30532 (35x80)
RF29817 (35x100)

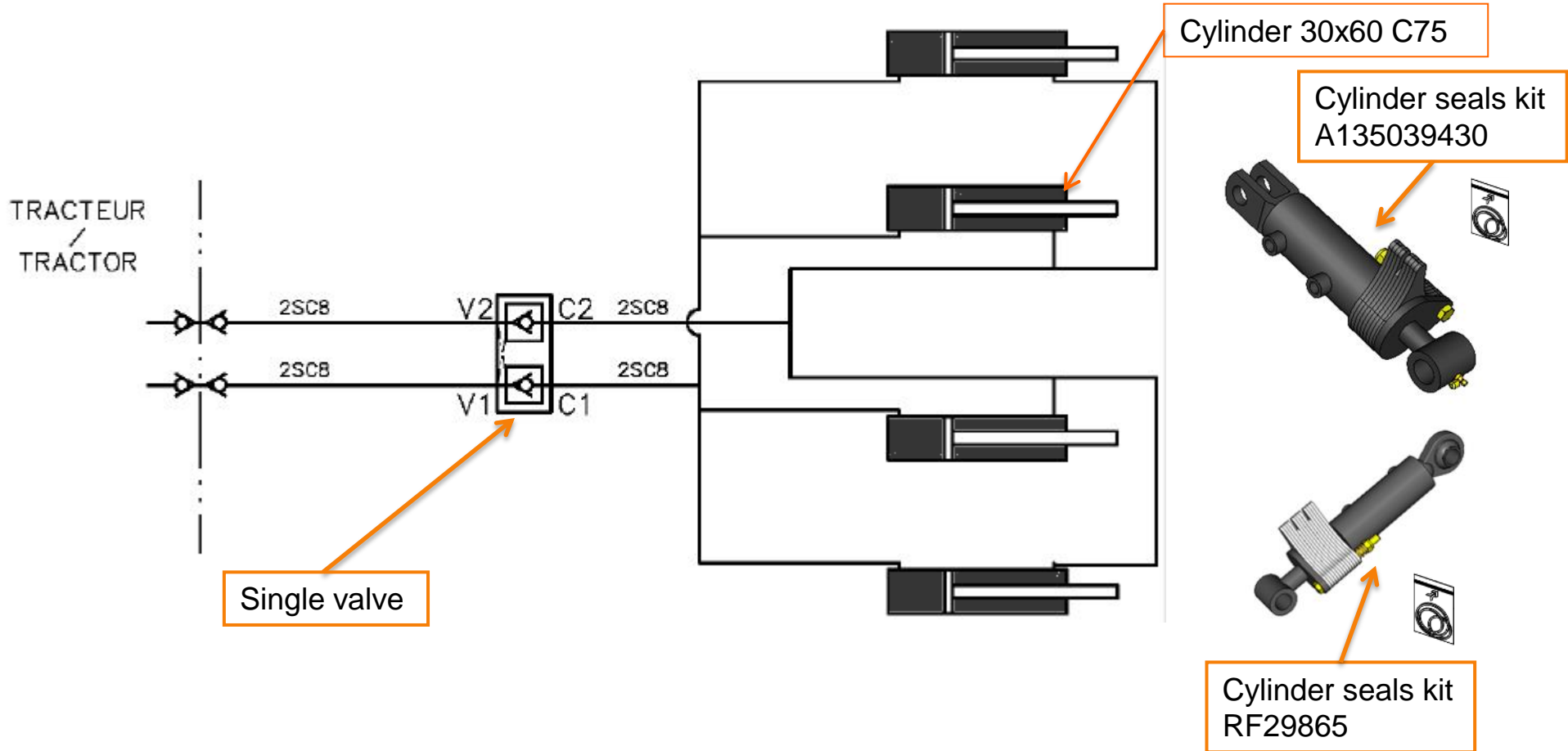
Folding Qualidisc Farmer 4m et 5m



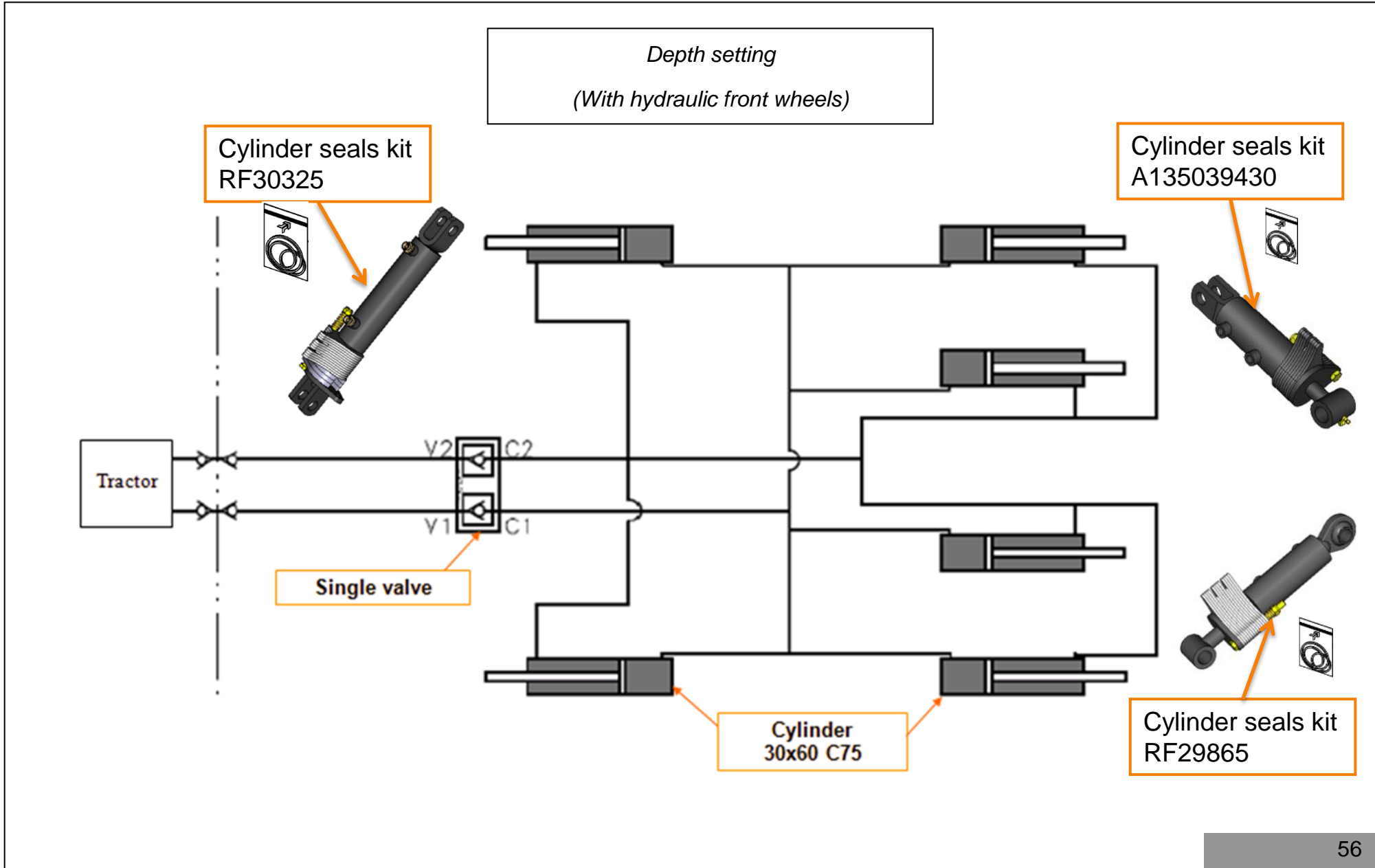
Folding Qualidisc Farmer 6m and Qualidisc Farmer Trailed



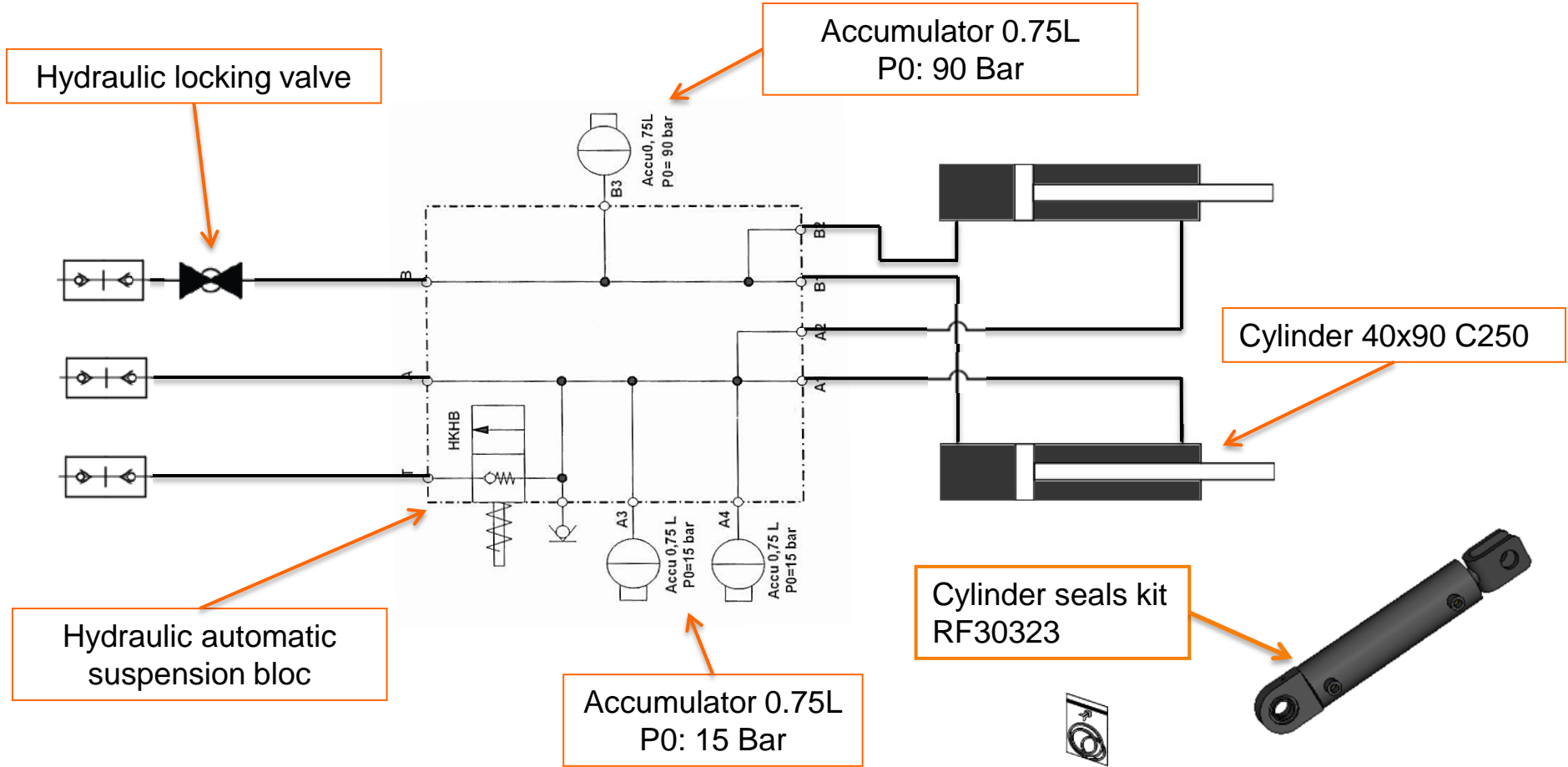
*Depth setting
(Without hydraulic front wheels)*

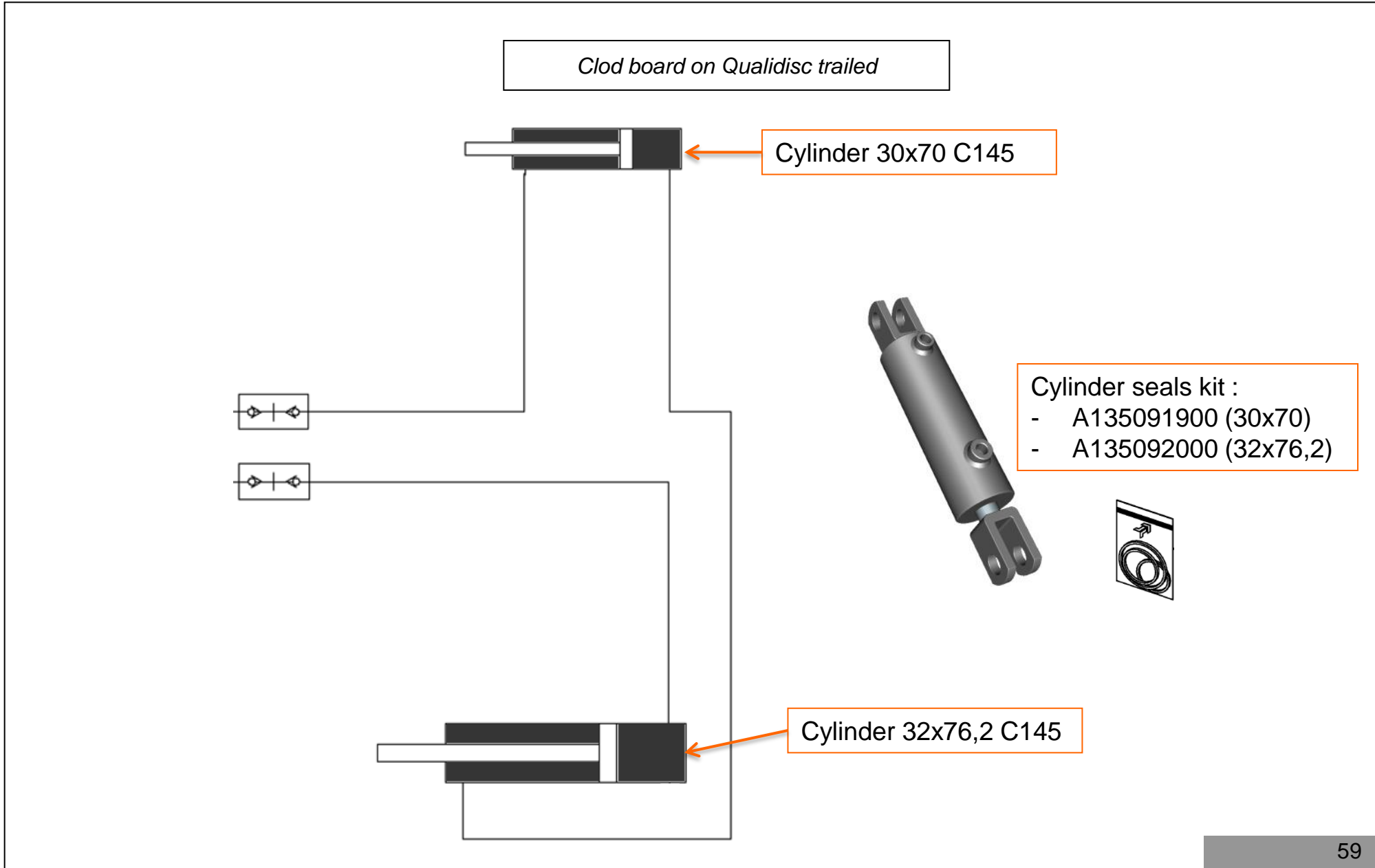


10. Hydraulic diagrams

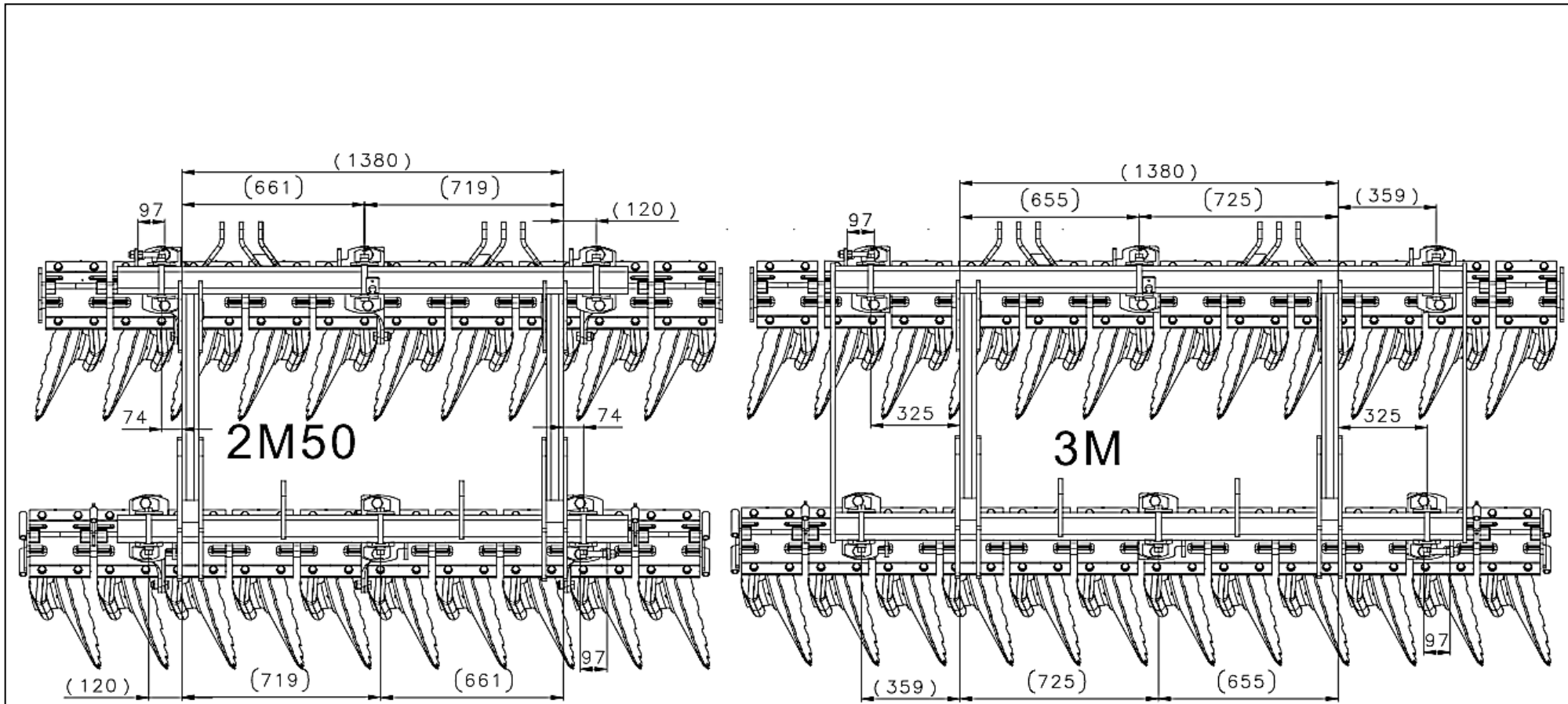


Standard lifting on Qualidisc trailed

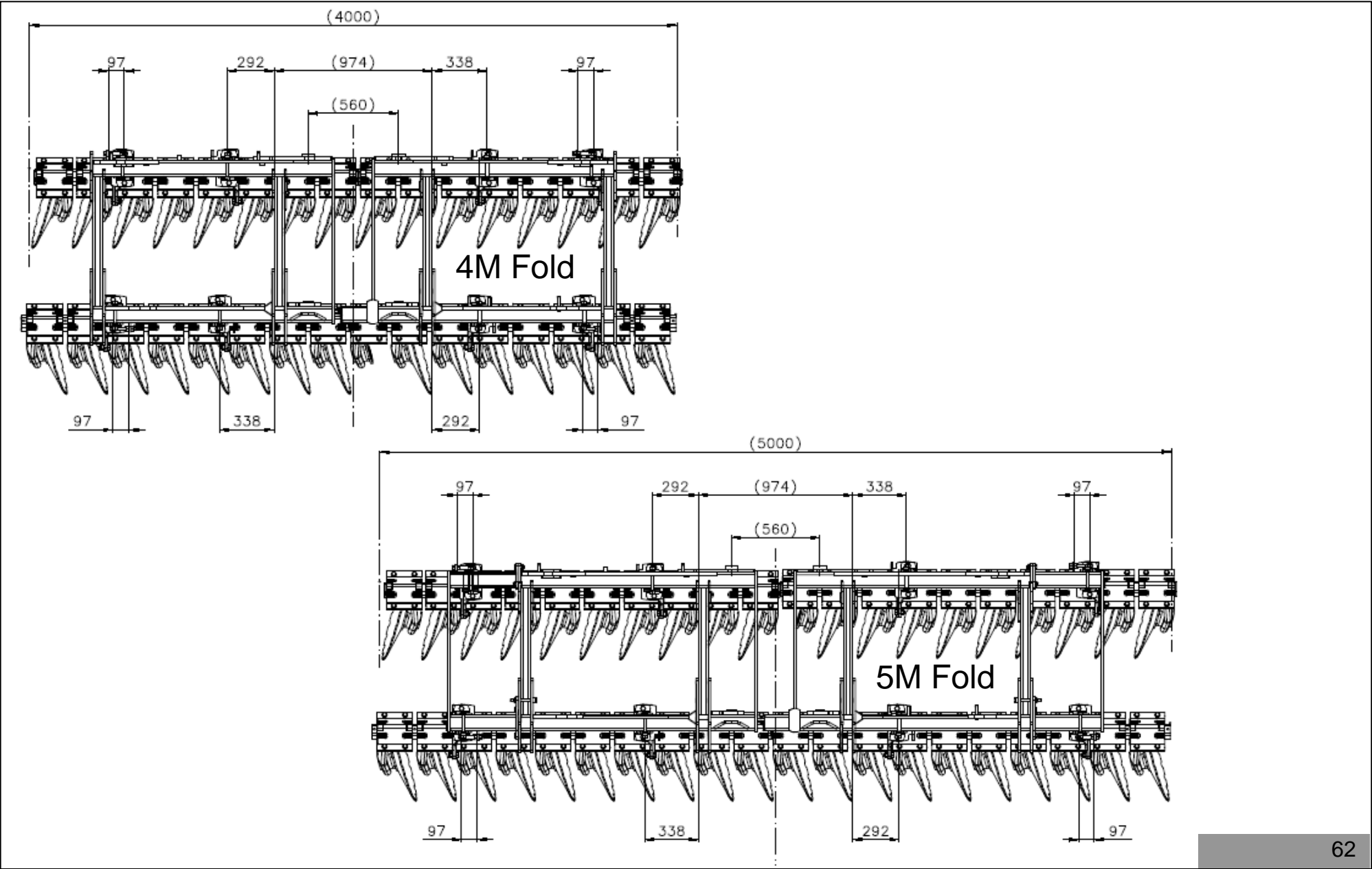




11. Positioning plan of rows of discs : Qualidisc Pro



11. Positioning plan of rows of discs : Qualidisc Pro



11. Positioning plan of rows of discs : Qualidisc Pro

