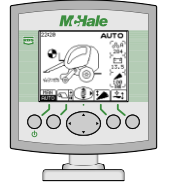
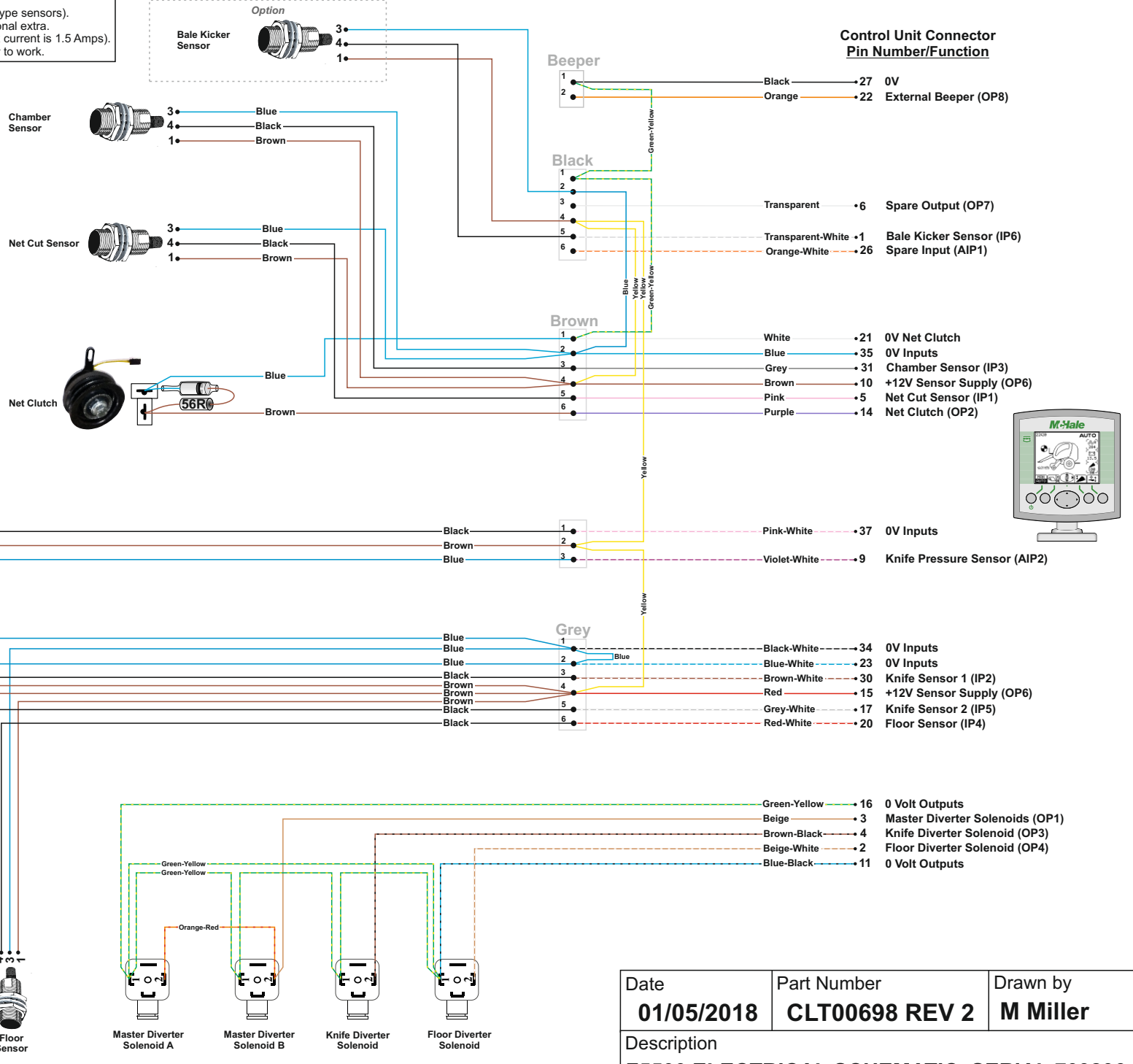
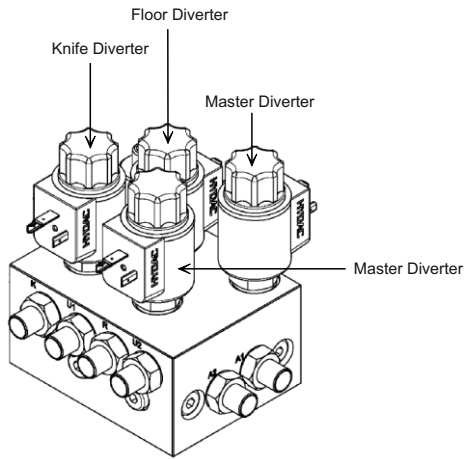


NOTES:

- Electrical schematic for F5500s from serial 709206 onward (machines with M18 type sensors).
- Chopping Knife Sensor 2 is only used on machines with the selectable knife optional extra.
- Spare beeper connector may be used to connect an external bale full alarm (max current is 1.5 Amps).
- Optional Bale Kicker Sensor added in Rev 1. Update to latest software for sensor to work.



Date	Part Number	Drawn by
01/05/2018	CLT00698 REV 2	M Miller
Description		
F5500 ELECTRICAL SCHEMATIC, SERIAL 709206+		